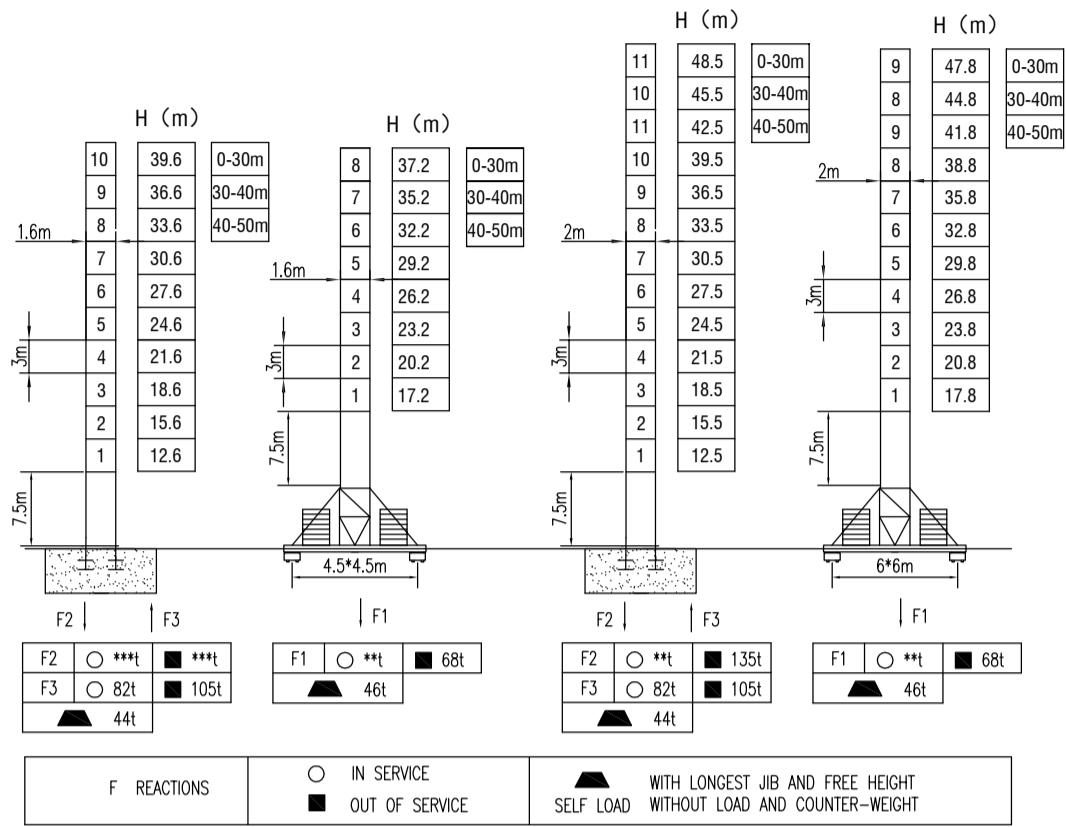
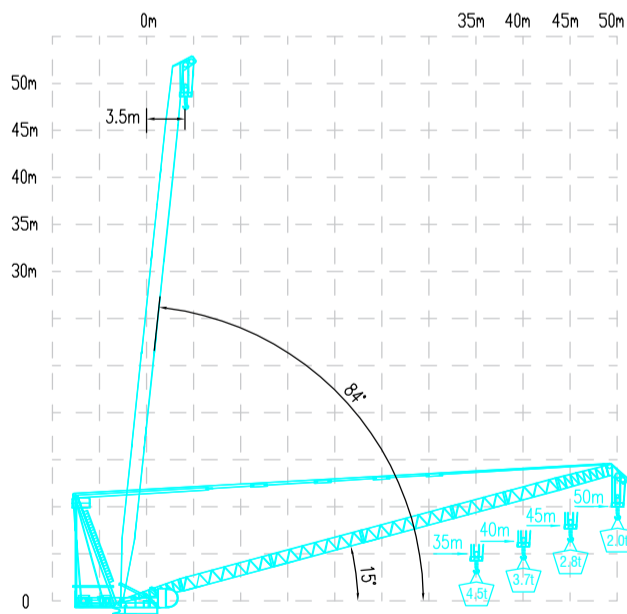


**MILISCORP**

MAST SECTION



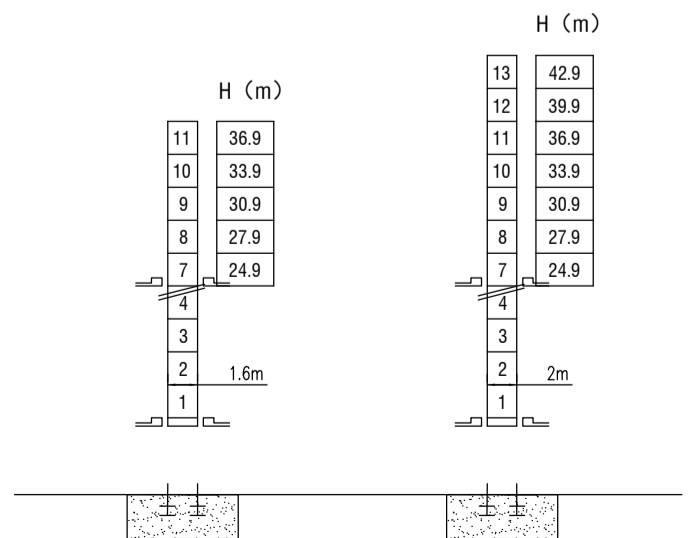
LOAD DIAGRAMS



TECHNICAL PARAMETER

MECHANISMS									
Hoisting	45LVF	m/min	0-42	0-80	0-21	0-42	500	45	
		t	5	2.5	10	5			
Luffing	45DVF	min	3				45		
Slewing	120RCV	r/min	0-0.68				120Nm*2		
Travelling	RT443	m/min	22/11				3.4*4		
Power supply		380v.50Hz / 440v.60Hz							
Necessary electric power		115KVA							

INNER CLIMBING



\* The technical information can not be published without approval. The specifications are not subject to legal constraints due to continually products improved, the performance data will be modified without notice.