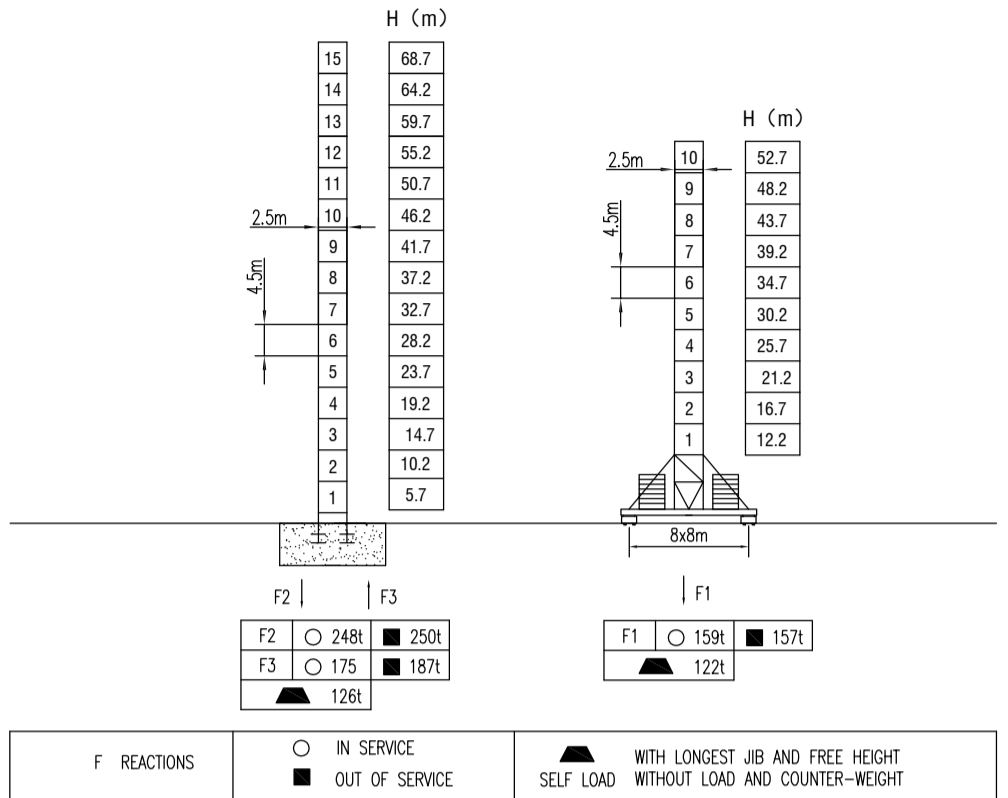
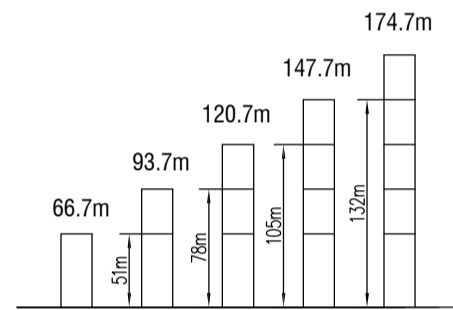


MAST SECTION



ANCHORAGES



LOAD DIAGRAMS

Radius	3.8	R(Cmax)m/t	19.55	25	29.55	35	40	45	50	55	60	65	70	75	80	m
80m		16.55/24.0	24.0	13.2	11.0	9.1	7.7	6.7	5.8	5.15	4.55	4.05	3.7	3.3	3.0	t
		29.55/12.0		12.0	10.1	8.7	7.7	6.8	6.15	5.55	5.05	4.7	4.3	4.0		t
70m		18.85	25	30	36.55	40	45	50	55	60	65	70				m
		18.5/24.0	24.0	16.5	13.95	11.0	9.93	8.73	7.83	7.18	6.28	5.68	5.15			t
		36.55/12.0		12.0	10.73	9.73	8.83	8.18	7.28	6.68	6.15				t	
60m		19.5	25	30	35	40	44	50	52.8	60						m
		19.5/24.0	24.0	20.1	15.6	14.1	11.7	11.0	9.5	8.5	7.8					t
		44.0/12.0				12.0	10.5	9.5	8.8						t	
50m		25	30	35	40	45.5	50									m
		21.48/24.0	20.84	17.2	14.6	12.6	11.0	9.9								t
		45.5/12.0			12.0	10.9									t	

TECHNICAL PARAMETER

MECHANISMS						kw		
Hoisting		110LFT50	m/min 0-45	0-96	0-22	0-45	650	110
			t	12	6	24	12	
Trolleying		15DCV16	0-56 m/min				15	
Slewing		145RCV12	0-0.7 r/min				145NMx3	
Power supply	380v.50Hz / 440v.60Hz							
Necessary electric power	155KVA							

\* The technical information can not be published without approval. The specifications are not subject to legal constraints due to continually products improved, the performance data will be modified without notice.