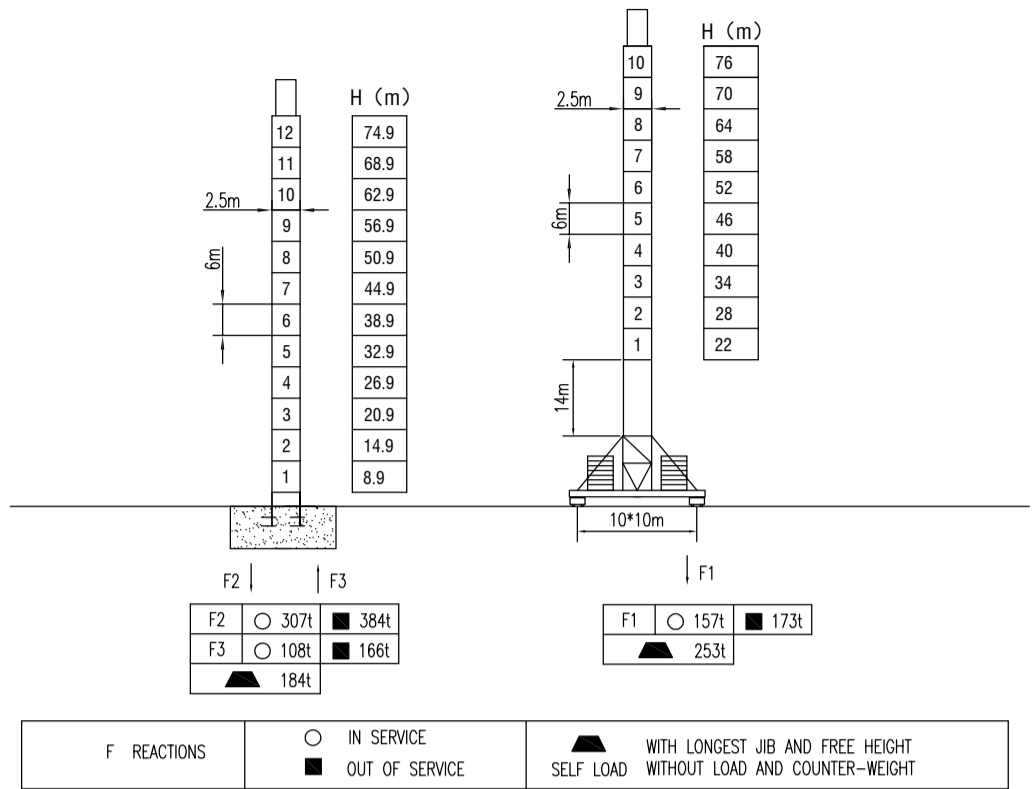
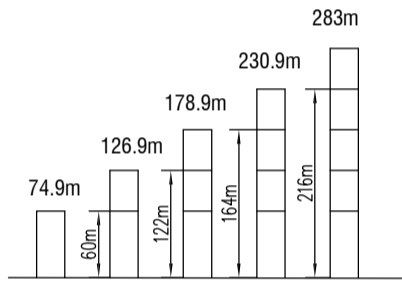


**MILISCORP**

MAST SECTION



ANCHORAGES



LOAD DIAGRAMS

Radius	5.4	R(Cmax)m/t	20	25	30	35	40	45	50	55	60	65	70	75	80	m
80m	⚙️	16.5 / 32.0	29.0	22.0	17.6	15.2	13.2	11.2	9.8	8.7	7.5	6.7	6.0	5.4	4.9	t
		36 / 16.0			16.0	14.0	12.0	10.6	9.5	8.3	7.5	6.8	6.2	5.7		t
60m	⚙️	18.7 / 32.0	29.3	22.2	17.8	15.8	13.5	11.6	10.2	9.0	8.0					t
		36.5 / 16.0			16.0	14.3	12.4	11.0	9.8	8.8						t
50m	⚙️	18.7 / 32.0	29.3	22.2	17.8	15.2	13.8	11.7	10.3							t
		36.8 / 16.0			16.0	14.5	12.5	11.1								t

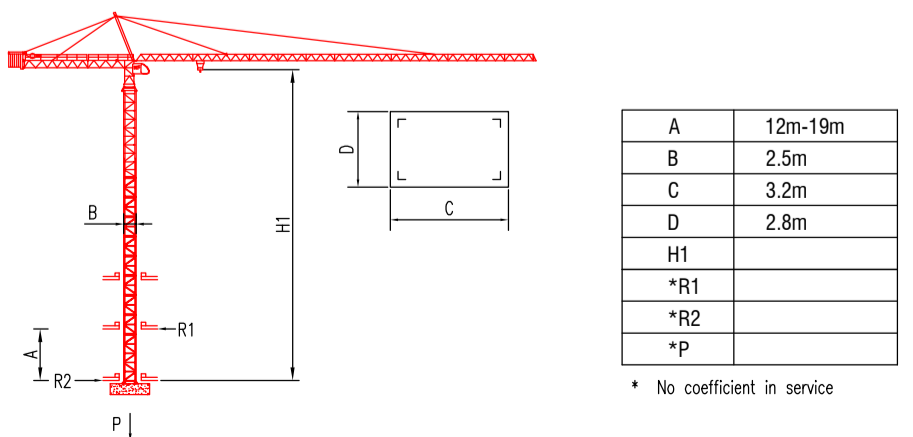
COUNTER-JIB BALLAST

Radius	Ballast Capacity
80m	44t
75m	42t
70m	40t
65m	36t
60m	32t
50m	28t

TECHNICAL PARAMETER

MECHANISMS															
Hoisting	⬆️	110LVF	m/min	0-25	0-33.6	0-50	0-80	0-100	0-12.5	0-16.8	0-55	0-40	0-50	488	110
			t	16.0	12.0	8.0	4.0	2.0	32.0	24.0	16.0	8.0	4.0		
Trolleying	⬅️➡️	15DVF		0-60 m/min										11	
Stewing	🌀	9RVF		0-0.3 r/min										9*4	
Travelling	🚶	40TVF		0-8.5-17 m/min										5.2*8	
Power supply				380v.50Hz / 440v.60Hz											
Necessary electric power				280KVA											

INNER CLIMBING



\* The technical information can not be published without approval. The specifications are not subject to legal constraints due to continually products improved, the performance data will be modified without notice.