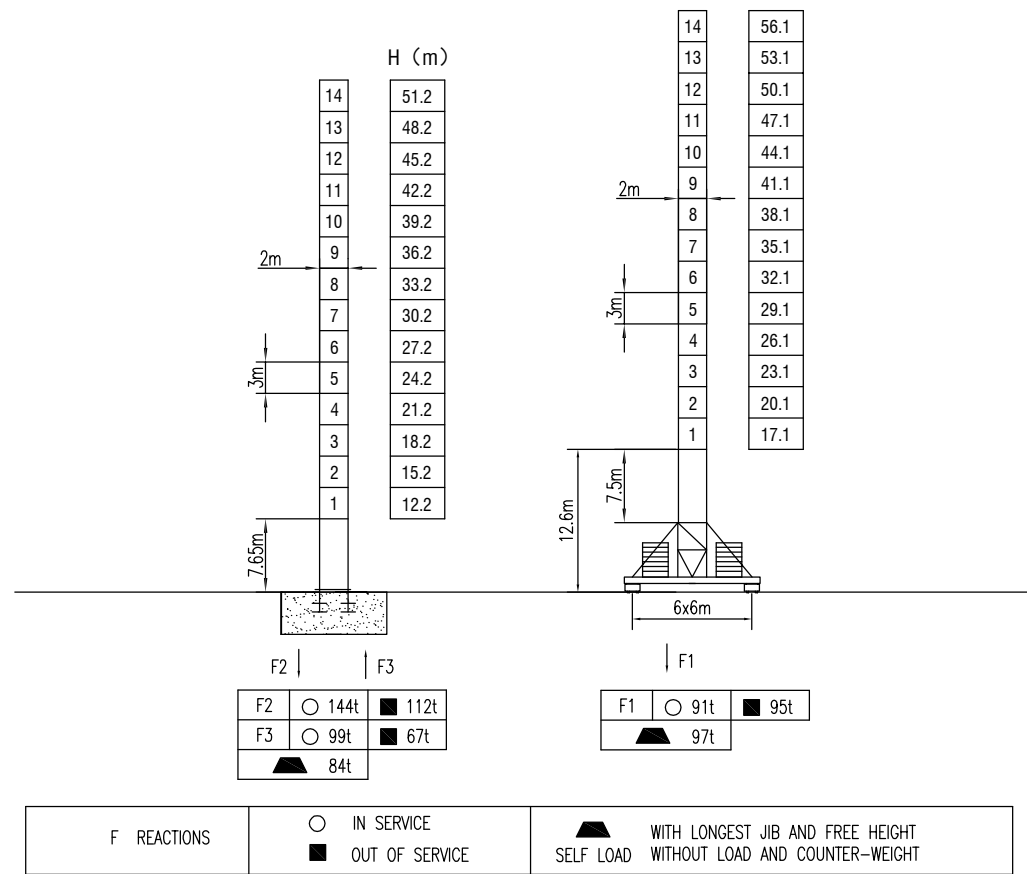
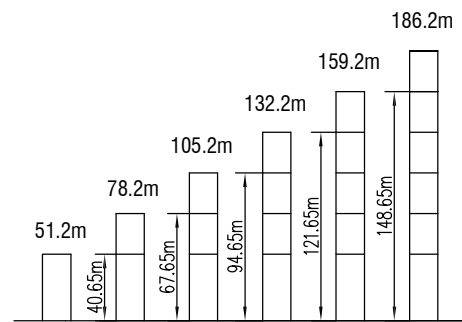


MAST SECTION



ANCHORAGES



LOAD DIAGRAMS

Radius	3.1	R(Cmax)m/t	15	20	25	30	35	40	45	50	55	60	65	70	75	m
75m	16.0 / 16.0	34.37 / 8.0	14.0	11.6	9.27	7.72	6.56	5.67	4.96	4.38	3.9	3.49	3.14	2.54		t
			8.0	7.88	6.72	5.83	5.12	4.54	4.06	3.65	3.3		t			
70m	16.0 / 16.0	34.37 / 8.0	14.0	11.6	9.27	7.72	6.56	5.67	4.96	4.38	3.9	3.49	3.14			t
			8.0	7.88	6.72	5.83	5.12	4.54	4.06	3.65	3.3		t			
65m	16.4 / 16.0	35.48 / 8.0	14.0	11.9	9.6	8.0	6.81	5.89	5.16	4.56	4.06	3.64				t
			8.0	6.97	6.05	5.32	4.72	4.22	3.80				t			
60m	16.5 / 16.0	36.72 / 8.0	14.0	12.5	9.97	8.31	7.08	6.13	5.37	4.75	4.24					t
			8.0	7.24	6.29	5.53	4.91	4.4					t			
55m	17.4 / 16.0	38.0 / 8.0	15.0	13.0	10.3	8.61	7.34	6.36	5.58	4.94						t
			8.0	7.5	6.52	5.74	5.1						t			
50m	18.1 / 16.0	38.75 / 8.0	15.0	11.5	10.6	8.84	7.54	6.54	5.74							t
			8.0	7.7	6.7	5.9							t			
45m	18.4 / 16.0	39.18 / 8.0	14.5	13.0	11.0	9.18	7.84	6.8								t
			8.0	7.0	6.96								t			

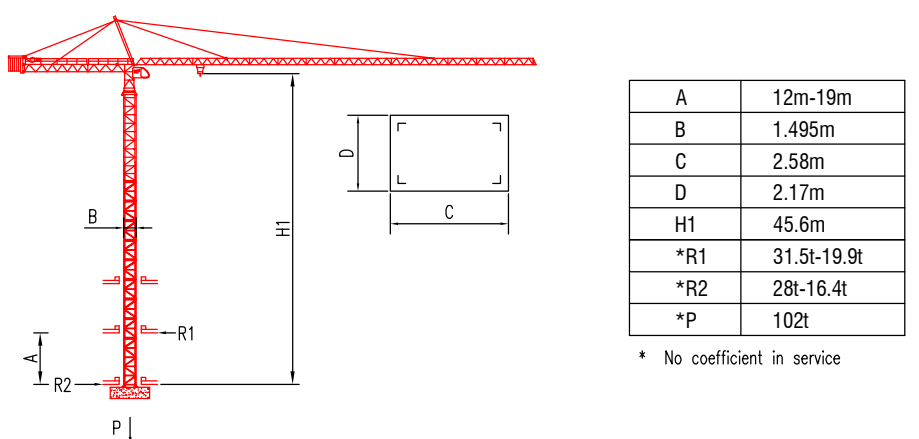
COUNTER-JIB BALLAST

Radius	Counter-jib Ballast (t)
75m	21.6t
70m	21.6t
65m	20.94t
60m	17.34t
55m	17.15t
50m	16.3t
45m	13.55t

TECHNICAL PARAMETER

MECHANISMS		Hoisting			Trolleying			Slewing		Travelling		Power supply	
		m/min	0-4	0-60	0-80	0-0	0-30	0-40	m	kw			
Hoisting	75LVF	t	8	4	2	16	8	4	600	75			
		t	8	4	2	16	8	4	600	75			
Hoisting	70RCS40	m/min	30	60	15	30			600	51.5			
		t	8	4	16	8			600	51.5			
Trolleying	7.5TVF	0-60 m/min								7.5			
	8T3V8	17/42/84 m/min								90Nm			
Slewing	9SVF	0-0.6r/min								9x2			
	RCV145	0-0.8 r/min								145Nm ^{x2}			
Travelling	5.5TRVF	0-30 m/min								5.5x4			
Power supply		380v.50Hz / 440v.60Hz											
Necessary electric power		130KVA											

INNER CLIMBING



* The technical information can not be published without approval. The specifications are not subject to legal constraints due to continually products improved, the performance data will be modified without notice.