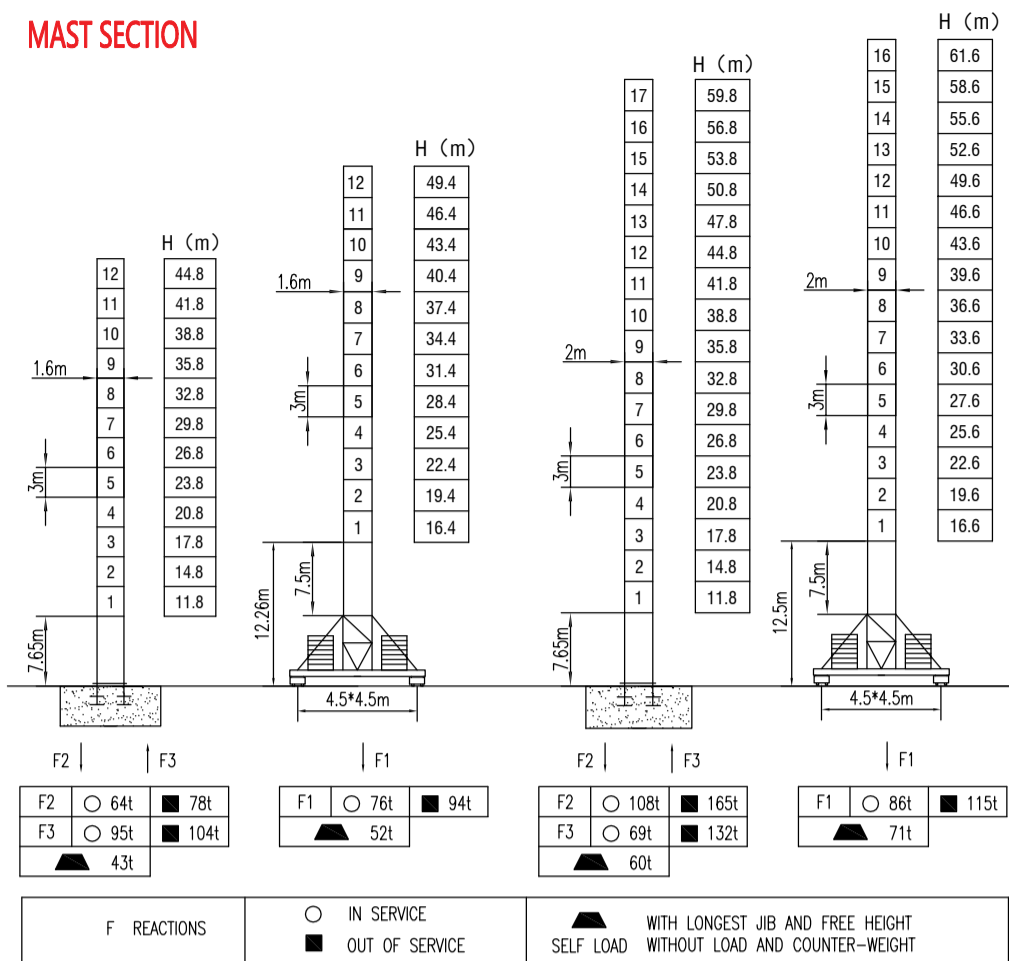
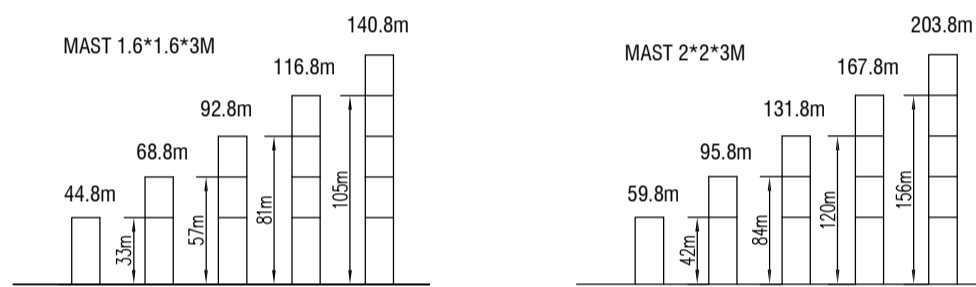


MAST SECTION



ANCHORAGES



LOAD DIAGRAMS

Radius	2.9	R(Cmax)m/t	20	25	30	35	40	45	50	55	60	m
60m	⚙️	11.75 / 8.0	4.90	3.9	3.54	2.94	2.45	2.13	1.8	1.38	1.4	t
		26.0 / 4.0	4.0	3.53	2.95	2.46	2.14	1.9	1.69	1.5	t	
55m	⚙️	16.0 / 8.0	6.00	4.70	3.9	3.35	2.75	2.4	2.27	1.9	t	
		32.0 / 4.0	4.0	3.45	2.85	2.5	2.28	2.0	t			
50m	⚙️	18.0 / 8.0	6.90	5.75	3.9	3.75	3.2	2.75	2.4	t		
		33.5 / 4.0	4.00	3.85	3.3	2.85	2.5	t				
45m	⚙️	18.0 / 8.0	7.2	5.6	4.7	4.0	3.45	2.9	t			
		37.0 / 4.0	4.0	3.55	3.0	t						

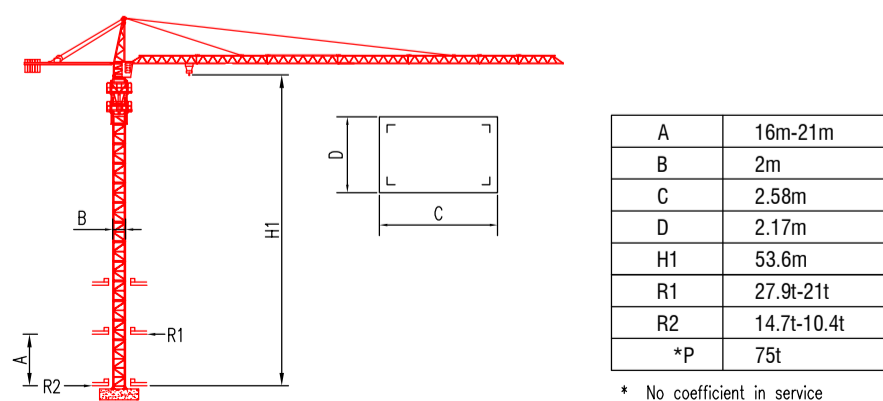
COUNTER-JIB BALLAST

Radius	Counter-jib ballast
60m	16.45t
55m	14.65t
50m	18.35t
45m	16.75t

TECHNICAL PARAMETER

MECHANISMS		⚙️		⚙️		⚙️		⚙️		⚙️		⚙️	
Hoisting	⬆️	45LVF	m/min	0-4.8	0-20	0-40	0-60	0-80	0-2.4	0-10	0-20	0-30	0-40
			t	5	5	5	2.5	1.25	10	10	10	5	2.5
70RCS25	⬆️	m/min	0-5	0-11	0-21	0-42	0-85	0-2.5	0-5	0-11	0-21	0-42	
		t	5	5	5	2.5	1.25	10	10	10	5	2.5	≥500
Trolleying	⬅️	4TVF	0-55 m/min										4
		4T3V4	7.5/28/57 m/min										95Nm
Slewing	⦿	5.5SVF	0-0.7 r/min										5.5x2
		RVC95	0-0.8 r/min										95Nm x2
Travelling	⬅️	RT443	15-30 m/min										3.7x4
Power supply		380v.50Hz / 440v.60Hz											
Necessary electric power		90KVA / 70KVA											

INNER CLIMBING



* The technical information can not be published without approval. The specifications are not subject to legal constraints due to continually products improved, the performance data will be modified without notice.