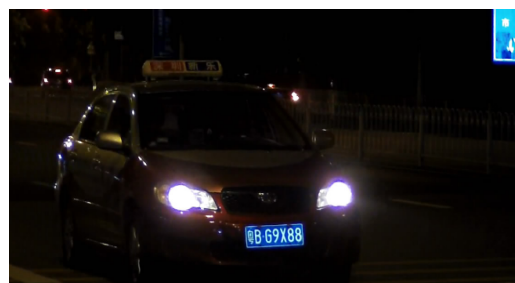


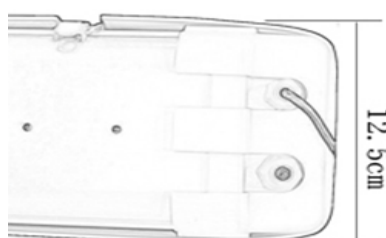
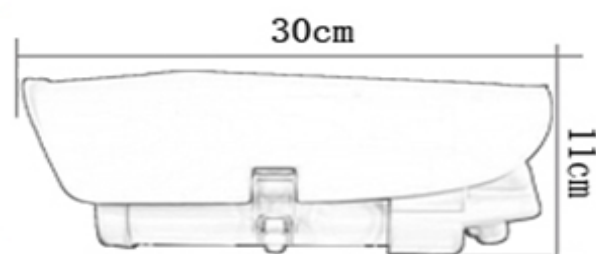
IP66 Waterproof 2.0MP LPR IP Camera (5-50mm Varifocal Lens with heater and fan)



Features

- * 1/2.7" 2M CMOS sensor
- * Ambarella A5 processor
- * 5-50mm Megapixel Lens
- * Strong compatibility, high performance
- * 0-150km/h vehicle speed adjustable.

Dimension



Accessories

- CD
- Guarantee card
- Screw
- Desiccant

Specification

Product Name	IP66 Waterproof 2.0MP Lpr IP Camera (5-50mm Varifocal Lens with heater and fan)
Model	WDM-LP6020WVIP200

Video

Image sensor	1/2.7" 2M CMOS sensor
Processor	Ambarella A5 processor
Resolution	1920*1080
Video output	Network and CVBS
Compression	H.264 high profile, M-JPEG

FPS	1920x1080/1-30fps
	1280*960/1-30fps
	1280*720/1-30fps

Compressed code	256K-12Mbps
Dual streaming	Support
3D DNR	Support

Function

Network interface	RJ45 ethernet port, 10/100M TCP/IP/UDP/RTSP/FTP/PPPOE/DHCP/DDNS/NTP/UPnP supported
LPR model	Vehicle speed, environment brightness adjustable

Common

Day/night	Auto switching (IR model)
LED	White light LED array
Lens	5-50mm Megapixel Lens
Power supply	DC12V(±10%) / POE(IEEE802.3at)
Power dissipation	14W(LED and heater works)
Work temperature, humidity	-10°C~55°C, 10%~90% RH
Temperature control	-5°C heater(optional), 45°C fan works
Waterproof	IP66
Dimension	300x125x110mm
Weight	1300g