

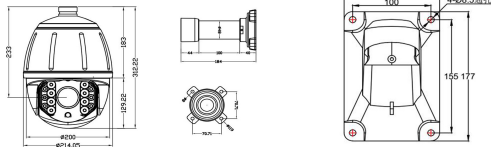
7" 36X 2.0MP High Speed HD-IP PTZ Camera with OSD



## Features

- \* 7" double layer metal body construction, IP66 rate protection
- \* 1/2.8" Low Lux CMOS 2.0 Megapixels, 36X optical zoom
- \* HD-IP digital interface output, 2.0MP high definition image
- \* PWM function, intelligent IR illumination & power consumption is variable, dependant the zoom facto
- \* IR distance 150M
- \* Support P2P function, Android/iPhone view, OSD menu is available
- \* Applicable scenarios: warehouses, underground parking lots, factories street, a park, high speed motorway, etc

## Dimension



<b>Product Name</b>	7" 36X 2.0MP High Speed HD-IP PTZ Camera with OSD
<b>Camera</b>	
Mode Number	WDM-IP8816W-36X
Image Sensor	HI3516A + SONY IMX307
Effective Pixels	1/2.8" starlight CMOS, 2.0 Megapixels
Min. Illumination	Color 0.01Lux@(F1.6, AGC ON) ; black and white 0.001Lux@(F1.6, AGC ON)
Zoom	36X optical zoom,f= 4.6mm-165mm
Day/Night	Day / Night / External control (IR Cut Filter)
SNR	≥50dB(AGC OFF)
WDR	Digital WDR≥100dB
AGC	Auto / Manual
White balance	Auto/Manual /ATW/Indoor/Outdoor/Daylight lamp/Sodium lamp
Digital noise Reduction	DNR, 3DNR
<b>Network</b>	
Video Compression	H.265/H.264/M-JPEG
Max Image Size	1920*1080@20fps
Streams	Dual streams
Frame Rate	Main stream: 2.0MP: 1920*1080, 1-20fps
	Main stream: 1.0MP: 1280*720, 1-30fps
Bitrate	CBR/VBR, bitrate; 32Kbps~10Mbps variable
Audio Compression	G711/ACC
P2P	Android / IOS
Protocols	TCP/IP, HTTP, NTP, IGMP, DHCP, UDP, SMTP, RTP, RTSP, ARP, DDNS, DNS, PPPoE, P2P
Motion detect	Support
Privacy Zone Masking	Support
Onvif	Onvif 2.4
<b>IR parameters</b>	
Night vision distance	150M
<b>Dome Features</b>	
Pan Range	Level: 360; vertical: 93
Tilt Range	0~93°(Auto Flip)
Manual pan speed	0-120°/s
Manual tilt speed	0-60°/s
Proportional transmission	Automatic matching of speed and focal length
Preset points	220
Operation OSD language	Chinese /English
<b>General</b>	
Work temperature	-40℃~+70℃
Work Humidity	0%~95% (Non condensing)
Temperature control	Intelligent control
Power	DC12V(3A) / AC24V (3A)
Consumption	≤15W
Lightning Protection	Transient Voltage 6000V