



SHANDONG WAMIT CNC TECHNOLOGY CO.LTD

Address: No.1341 of KECHUANG ROAD, GAOXIN DISTRICT, JINAN CITY, CHINA

Mobile: 86-18945047060, **skype:** shuangtai3

Email: sale@waterjetwamit.com, lgmmachinery@foxmail.com

Website: www.machinery.net, www.waterjetwamit.com **WECHAT:** dergirl, **whatsapp:**0086-18945047060

Facebook: www.facebook.com/waterjetcuttingsystems

Company Profile

SHANDONG WAMIT CNC TECHNOLOGY CO.LTD is the professional manufacturer of water jet cutting machine and spare parts for all Chinese brand water jet cutting machine . our factory is located in JINAN city, SHANDONG province, China. And HARBIN QIAN FAN XI FENG MACHINERY is our branch for international business. We can also supply laser machines ,high pressure cleaners, stone machinery ,UV digital printer with factory price and best quality in China.

we have 420Mpa intensifier pump, 600Mpa intensifier pump ,direct drive pump and 420mpa with dual intensifier pump, we also can provide 3 axis , 5 axis with 10 degree and dynamic 5 axis with 60 degree cutting head water jet cutting machine, pure water cutting and abrasive sand cutting. our machines are with excellent quality - efficient and accuracy, economical investment with low initial cost and low maintenance cost to our customers. All the machinery delivered by us come with first class after-sale service. all machines are with one-year warranty of main parts, whole-life after-service for the entire machine.

We can supply water jet cutting machine according to your requests,from the cutting table size to the special design . Especially our new design of automatic abrasive sand removing system bring convenience for glass and marble factories. this system can fit for any brand water jet cutting machine. you needn't stop the machine while it is working.

our new FLOW type cutting head can improve you 10% cutting efficiency, and our new technology can make the machine moving speed to 30-50m/min so that reduce you 15%-50% cutting cost according to the materials.

Until now We have expanded our market to North America, Australia, Southeast Asia, Central Asia and the Middle East. And establish a good relationship with our customers in Russia, Argentina, America, Canada, UK, Chile, South Africa, Ecuador, Kuwait, Hungary , Saudi Arabia , Vietnam, Turkey, Mexico, Malaysia ,Australia and other countries and regions.

we now have after-service department in America, Russia, South Africa, Ecuador, UK, Argentina, Chile. Mexico, Australia, Saudi Arabia, Malaysia. Vietnam.



SHANDONG WAMIT CNC TECHNOLOGY CO.LTD

Address: No.1341 of KECHUANG ROAD, GAOXIN DISTRICT, JINAN CITY, CHINA

Mobile: 86-18945047060, **skype:** shuangtai3

Email: sale@waterjetwamit.com, lgmmachinery@foxmail.com

Website: www.machinery.net, www.waterjetwamit.com **WECHAT:** dergirl, **whatsapp:** 0086-18945047060

Facebook: www.facebook.com/waterjetcuttingsystems

We takes "customer first, reliable quality, honest and faithful, good team work" as our consistent business principle. With the strict management and continuous improvement, we can supply the best way of cutting by water jet. please don't hesitate to contact us if you want to know more!

CNC Water jet cutting machine introduction

Water jet cutting machine is an efficient, economical, and practical equipment, most water jet cutting machine is with intensifier pump, but our water jet cutting machine is with high pressure direct crankshaft pump, the maximum pressure can be up to 420MPa and up to 90% efficiency, superior performance, beautiful appearance, high reliability, as the incidence of water source has been used in metal processing industry, stone processing, glass processing, advertising signs, gifts and art which is widely used in institutions and other enterprises. Among them, the portable water cutting system auxiliary equipment can achieve different objects cutting through the high pressure hose with the system host. The portable water jet cutting machine can be freely used, compact and beautiful, simple operation, easy to control. To adapt the working environment to maximize the fuselage in order to achieve different objects cutting through different chains connections. Can cut and destroy the pipes, plane-like object, suspected hazardous materials. Waterjet cutting capacity is unlimited, water jet can cut any material, and maintain smooth incision, no heat and harmful substances cutting, after cutting, no need or ease for secondary processing, safe, environmental protection, low cost, fast speed, high efficiency, without changing the tool, enabling arbitrary curve cutting, convenient and flexible, and versatile. Water jet cutting, has a good reputation in various industries! Materials commonly cut with a water jet include rubber, foam, plastics, leather, composites, stone, tile, metals, food, paper and much more. Materials that cannot be cut with a water jet are tempered glass, diamonds and certain ceramics. It can cut shaped graphics, graphic work irregular figure, geometry, graphs, non-standard cutting; ceramic mosaic, marble mosaic, copper / aluminum / stainless steel / iron hollow carved, glass arts, mold cutting, cutting a variety of text, letters, advertisements plate engraving, signs and other cutting; engraving on a variety of different materials, patterns, letters and so on.

Application fields and cases





SHANDONG WAMIT CNC TECHNOLOGY CO.LTD

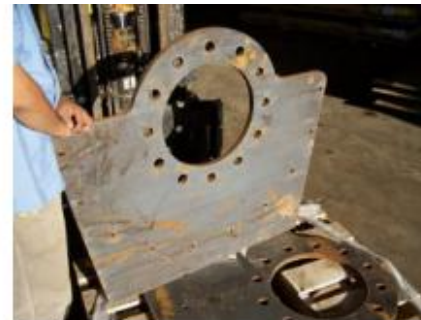
Address: No.1341 of KECHUANG ROAD, GAOXIN DISTRICT, JINAN CITY, CHINA

Mobile: 86-18945047060, **skype:** shuangtai3

Email: sale@waterjetwamit.com, lgmmachinery@foxmail.com

Website: www.machinery.net, www.waterjetwamit.com **WECHAT:** dergirl, **whatsapp:**0086-18945047060

Facebook: www.facebook.com/waterjetcuttingsystems





SHANDONG WAMIT CNC TECHNOLOGY CO.LTD

Address: No.1341 of KECHUANG ROAD, GAOXIN DISTRICT, JINAN CITY, CHINA

Mobile: 86-18945047060, **skype:** shuangtai3

Email: sale@waterjetwamit.com, lgmmachinery@foxmail.com

Website: www.machinery.net, www.waterjetwamit.com **WECHAT:** dergirl, **whatsapp:**0086-18945047060

Facebook: www.facebook.com/waterjetcuttingsystems

Smallest model WMT1010-AL

**This model no need installation, with 1*1m cutting size and 420mpa pump,
and price is lower than USD 30000!!!**





SHANDONG WAMIT CNC TECHNOLOGY CO.LTD

Address: No.1341 of KECHUANG ROAD, GAOXIN DISTRICT, JINAN CITY, CHINA

Mobile: 86-18945047060, **skype:** shuangtai3

Email: sale@waterjetwamit.com, lgmmachinery@foxmail.com

Website: www.machinery.net, www.waterjetwamit.com **WECHAT:** dergirl, **whatsapp:**0086-18945047060

Facebook: www.facebook.com/waterjetcuttingsystems



There are 4 basic parts of water jet cutting machine, CNC controller, cutting table, intensifier pump, abrasive sand feeding system.

1. CNC controller

Control System





SHANDONG WAMIT CNC TECHNOLOGY CO.LTD

Address: No.1341 of KECHUANG ROAD, GAOXIN DISTRICT, JINAN CITY, CHINA

Mobile: 86-18945047060, **skype:** shuangtai3

Email: sale@waterjetwamit.com, lgmmachinery@foxmail.com

Website: www.machinery.net, www.waterjetwamit.com **WECHAT:** dergirl, **whatsapp:**0086-18945047060

Facebook: www.facebook.com/waterjetcuttingsystems

Features

1. colour LCD 19 inch(cpu: yonah, RAM: 2G, mainboard: GUANMING 945, HDD: 320G, DVD, USB)
2. Support starts, breakpoint continue, handwheel guiding function.
3. windows 7 operating system, professional water cutting software: NC studio V9.30
4. Graphic simulation and analog processing functions
5. Return function along the original track
6. Reverse cutting function
7. Auto division of materials function
8. Display / Rotate / Mirror Cut
9. Metric / imperial conversion
- 10.Chinese / English online switch
- 11.Magnification adjustment function





SHANDONG WAMIT CNC TECHNOLOGY CO.LTD

Address: No.1341 of KECHUANG ROAD, GAOXIN DISTRICT, JINAN CITY, CHINA

Mobile: 86-18945047060, **skype:** shuangtai3

Email: sale@waterjetwamit.com, lgmmachinery@foxmail.com

Website: www.machinery.net, www.waterjetwamit.com **WECHAT:** dergirl, **whatsapp:** 0086-18945047060

Facebook: www.facebook.com/waterjetcuttingsystems

12. Cutting gap compensation

13. PLC is from SIEMENS

14. can set the on/off valve sequence and time interval

15. Corner deceleration function

16. Professional water jet cutting software from WEIHONG

17. Suitable file format dxf. Nce.nc.cnc.eng.plt.G-code etc

18. Electric components are Schneider brand

19. Cnc controller buttons are Schneider brand

2. Cutting table





SHANDONG WAMIT CNC TECHNOLOGY CO.LTD

Address: No.1341 of KECHUANG ROAD, GAOXIN DISTRICT, JINAN CITY, CHINA

Mobile: 86-18945047060, **skype:** shuangtai3

Email: sale@waterjetwamit.com, lgmmachinery@foxmail.com

Website: www.machinery.net, www.waterjetwamit.com **WECHAT:** dergirl, **whatsapp:** 0086-18945047060

Facebook: www.facebook.com/waterjetcuttingsystems

NEW MODEL MACHINE WHICH NO NEED INSTALLATION.





SHANDONG WAMIT CNC TECHNOLOGY CO.LTD

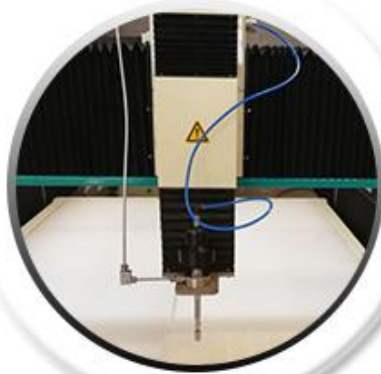
Address: No.1341 of KECHUANG ROAD, GAOXIN DISTRICT, JINAN CITY, CHINA

Mobile: 86-18945047060, **skype:** shuangtai3

Email: sale@waterjetwamit.com, lgmmachinery@foxmail.com

Website: www.machinery.net, www.waterjetwamit.com **WECHAT:** dergirl, **whatsapp:** 0086-18945047060

Facebook: www.facebook.com/waterjetcuttingsystems



Pure water
cutting head



5 axis with 10
degree cutting head



5 axis with 60
degree cutting head

(5 axis with 10 degree cutting head is with better function than 4 axis and



SHANDONG WAMIT CNC TECHNOLOGY CO.LTD

Address: No.1341 of KECHUANG ROAD, GAOXIN DISTRICT, JINAN CITY, CHINA

Mobile: 86-18945047060, **skype:** shuangtai3

Email: sale@waterjetwamit.com, lgmmachinery@foxmail.com

Website: www.machinery.net, www.waterjetwamit.com **WECHAT:** dergirl, **whatsapp:** 0086-18945047060

Facebook: www.facebook.com/waterjetcuttingsystems

widely used in marble cutting)

Designed specially for stone/marble industry

Designed specifically for the stone industry five axis water jet cutting head, this axis water jet cutting head is with optimized structural design, small size, light weight, and can be installed on existing cantilever and gantry type waterjet cutting machine.

Its maximum tilt angle of 10 degree, and can around the Z axis by unlimited rotation. There is angle ruler on the head, the user can easily set the desired tilt angle.

This product is for improving the processing efficiency in building materials industry, granite, marble, stone, ceramics, glass and other industries, especially for the decorative floral industry and parquet marble processing, eliminating the tedious process of secondary grinding, to improve the speed and quality of processing, while in the glass and metal cutting applications can also improve the perpendicularity of the cutting.

Z axis rotation speed can be 180 degree per second.

Can be installed on the classic Cantilever structure water jet cutting machine. easy loading and unloading .

Can be cut vertical or inclined.

Cutting can be manually adjusted to 10 degrees, the operation is simple and convenient





SHANDONG WAMIT CNC TECHNOLOGY CO.LTD

Address: No.1341 of KECHUANG ROAD, GAOXIN DISTRICT, JINAN CITY, CHINA

Mobile: 86-18945047060, skype: shuangtai3

Email:sale@waterjetwamit.com, lgmmachinery@foxmail.com

Website: www.machinery.net, www.waterjetwamit.com WECHAT: dergirl, whatsapp:0086-18945047060

Facebook: www.facebook.com/waterjetcuttingsystems

Ordinary marble mosaic waterjet cutting

10 degree five axis marble mosaic cutting

Cutting - Grinding - inlay - Glue - Sealant

Cutting - inlay - Glue - Sealant

Waterjetting



VS

Polish-free waterjetting

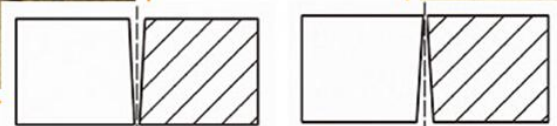
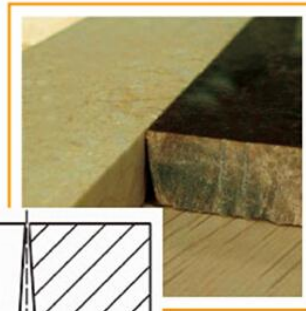


Waterjetting



VS

Polish-free waterjetting



is wat





SHANDONG WAMIT CNC TECHNOLOGY CO.LTD

Address: No.1341 of KECHUANG ROAD, GAOXIN DISTRICT, JINAN CITY, CHINA

Mobile: 86-18945047060, **skype:** shuangtai3

Email: sale@waterjetwamit.com, lgmmachinery@foxmail.com

Website: www.machinery.net, www.waterjetwamit.com **WECHAT:** dergirl, **whatsapp:** 0086-18945047060

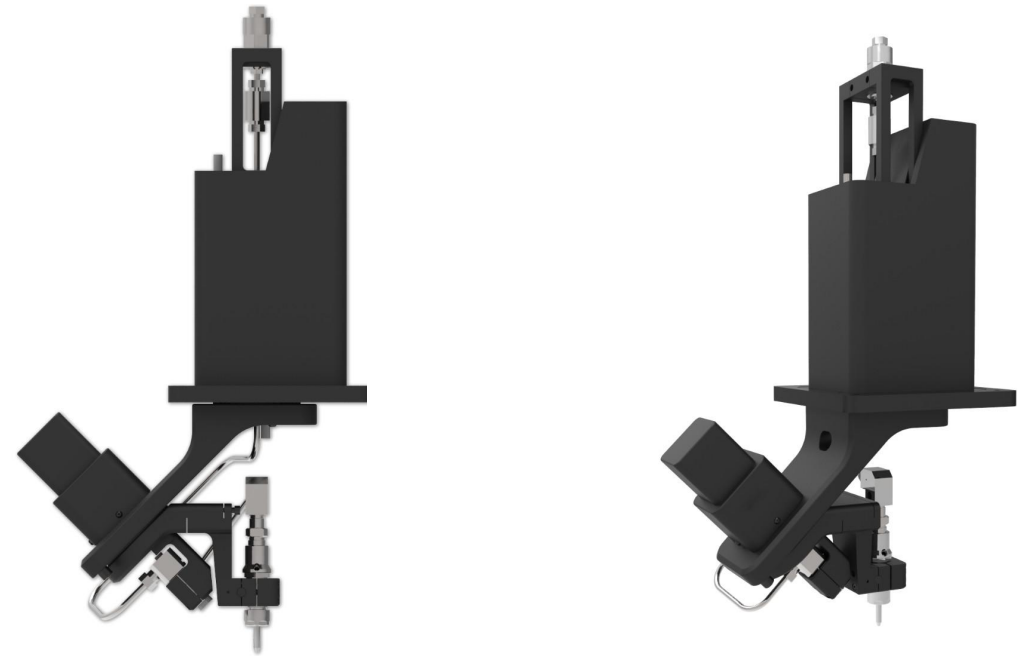
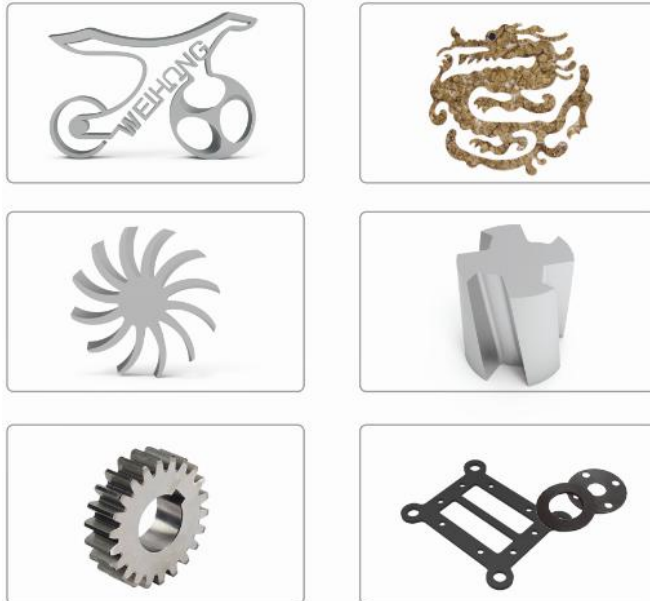
Facebook: www.facebook.com/waterjetcuttingsystems

Video address:

<https://youtu.be/QS0u804xHhk>

Advantage:

1. In the 380Mpa high-pressure water recoil force, cutting point position offset variation is less than 0.01mm
2. At 0-40 degrees Celsius temperature changes of the environment, cutting point position offset variation is less than 0.01mm
3. C-axis unlimited rotation degree can eliminates the cutting point hole in the return processing of start and stop which caused by high pressure water.
4. Excellent 5 axis WEIHONG cnc controlling system.



Specification



SHANDONG WAMIT CNC TECHNOLOGY CO.LTD

Address: No.1341 of KECHUANG ROAD, GAOXIN DISTRICT, JINAN CITY, CHINA

Mobile: 86-18945047060, **skype:** shuangtai3

Email: sale@waterjetwamit.com, lgmmachinery@foxmail.com

Website: www.machinery.net, www.waterjetwamit.com **WECHAT:** dergirl, **whatsapp:** 0086-18945047060

Facebook: www.facebook.com/waterjetcuttingsystems

| | |
|------------------------------------|--|
| Power | 220/380/415VAC , 50/60HZ |
| Max speed of X axis | 6000mm/min, we have new technology, the moving speed can be 30-50m/min. |
| Max speed of Y axis | 6000mm/min, we have new technology, the moving speed can be 30-50m/min. |
| Max speed of Z axis | 1000mm/min |
| Control accuracy | $\pm 0.01\text{mm}$ |
| Cutting accuracy | $\pm 0.1 - \pm 0.2\text{mm}$ (depend on cutting speed and material thickness) |
| Repeat positioning accuracy | $\pm 0.05\text{mm}$ |
| Driving system | imported AC servo motor system |

Advantage of our cutting table

1. Japanese Yaskawa servo motor



2. 6mm water tank thickness



3. 10mm steel water tank supporter





SHANDONG WAMIT CNC TECHNOLOGY CO.LTD

Address: No.1341 of KECHUANG ROAD, GAOXIN DISTRICT, JINAN CITY, CHINA

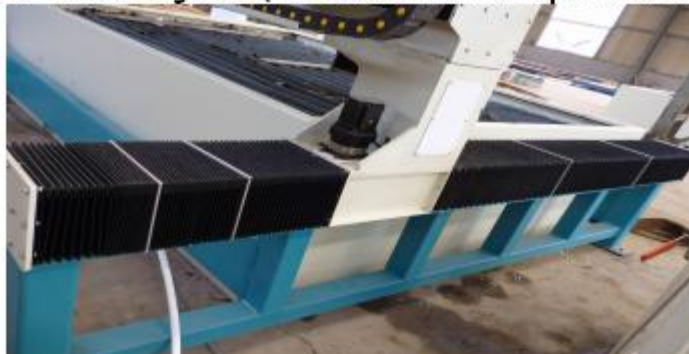
Mobile: 86-18945047060, **skype:** shuangtai3

Email: sale@waterjetwamit.com, lgmmachinery@foxmail.com

Website: www.machinery.net, www.waterjetwamit.com **WECHAT:** dergirl, **whatsapp:**0086-18945047060

Facebook: www.facebook.com/waterjetcuttingsystems

4. Soft cover of linear guider(this soft cover can protect linear guider better)





SHANDONG WAMIT CNC TECHNOLOGY CO.LTD

Address: No.1341 of KECHUANG ROAD, GAOXIN DISTRICT, JINAN CITY, CHINA

Mobile: 86-18945047060, **skype:** shuangtai3

Email: sale@waterjetwamit.com, lgmmachinery@foxmail.com

Website: www.machinery.net, www.waterjetwamit.com **WECHAT:** dergirl, **whatsapp:** 0086-18945047060

Facebook: www.facebook.com/waterjetcuttingsystems

6. Install linear guider automatically oil supply system(with this equipment, the linear guider no need maintenance and keep accuracy longer)





SHANDONG WAMIT CNC TECHNOLOGY CO.LTD

Address: No.1341 of KECHUANG ROAD, GAOXIN DISTRICT, JINAN CITY, CHINA

Mobile: 86-18945047060, **skype:** shuangtai3

Email: sale@waterjetwamit.com, lgmmachinery@foxmail.com

Website: www.machinery.net, www.waterjetwamit.com **WECHAT:** dergirl, **whatsapp:** 0086-18945047060

Facebook: www.facebook.com/waterjetcuttingsystems

8. TAIWAN imported TBI brand linear guider.





SHANDONG WAMIT CNC TECHNOLOGY CO.LTD

Address: No.1341 of KECHUANG ROAD, GAOXIN DISTRICT, JINAN CITY, CHINA

Mobile: 86-18945047060, **skype:** shuangtai3

Email: sale@waterjetwamit.com, lgmmachinery@foxmail.com

Website: www.machinery.net, www.waterjetwamit.com **WECHAT:** dergirl, **whatsapp:**0086-18945047060

Facebook: www.facebook.com/waterjetcuttingsystems

8. TAIWAN TBI ball screw and linear guider.

9. We have new technology that can make the machine axis moving speed is to 30-50m/min. This technology will greatly reduce cutting cost for glass industries, rubber industries, plastic processing, foam cutting, soft materials cutting and so on.

Cutting table size range



SHANDONG WAMIT CNC TECHNOLOGY CO.LTD

Address: No.1341 of KECHUANG ROAD, GAOXIN DISTRICT, JINAN CITY, CHINA

Mobile: 86-18945047060, **skype:** shuangtai3

Email: sale@waterjetwamit.com, lgmmachinery@foxmail.com

Website: www.machinery.net, www.waterjetwamit.com **WECHAT:** dergirl, **whatsapp:** 0086-18945047060

Facebook: www.facebook.com/waterjetcuttingsystems

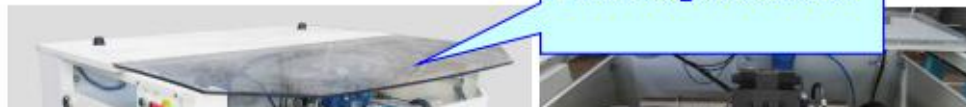
Models of Bridge type CNC waterjet cutting machine

| Model number | X Axis (mm) | Y Axis (mm) | Z Axis (mm) |
|--------------|-------------|-------------|-------------|
| WMT1010-AL | 1000 | 1000 | 150-200 |
| WMT1515-AL | 1300 | 1300 | 150-200 |
| WMT2015-AL | 1500 | 2000 | 150-200 |
| WMT2515-AL | 1500 | 2500 | 150-200 |
| WMT2520-AL | 2000 | 2500 | 150-200 |
| WMT3015-AL | 1500 | 3000 | 150-200 |
| WMT3020-AL | 1800 | 3000 | 150-200 |
| WMT4020-AL | 1500 | 4000 | 150-200 |
| WMT4030-AL | 1800 | 4000 | 150-200 |
| WMT5020-AL | 2000 | 5000 | 150-200 |
| WMT6020-AL | 2000 | 6000 | 150-200 |
| WMT8020-AL | 2000 | 8000 | 150-200 |
| WMT12020-AL | 2000 | 12000 | 150-200 |
| WMT5030-AL | 3000 | 5000 | 150-200 |
| WMT6030-AL | 3000 | 6000 | 150-200 |
| WMT8030-AL | 3000 | 8000 | 150-200 |
| WMT12030-AL | 3000 | 12000 | 150-200 |

Models of cantilever type CNC waterjet cutting machine

| Model number | X Axis (mm) | Y Axis (mm) | Z Axis (mm) |
|--------------|-------------|-------------|-------------|
| WMT1010-AX | 1000 | 1000 | 150-200 |
| WMT1515-AX | 1300 | 1300 | 150-200 |
| WMT2015-AX | 1500 | 2000 | 150-200 |
| WMT2515-AX | 1500 | 2500 | 150-200 |
| WMT2520-AX | 2000 | 2500 | 150-200 |
| WMT3015-AX | 1500 | 3000 | 150-200 |
| WMT3020-AX | 1800 | 3000 | 150-200 |
| WMT4015-AX | 1500 | 4000 | 150-200 |
| WMT4020-AX | 1800 | 4000 | 150-200 |
| WMT4030-AX | 2000 | 4000 | 150-200 |
| WMT5020-AX | 2000 | 5000 | 150-200 |
| WMT6020-AX | 2000 | 6000 | 150-200 |
| WMT8020-AX | 2000 | 8000 | 150-200 |
| WMT9020-AX | 2000 | 9000 | 150-200 |
| WMT10020-AX | 2000 | 10000 | 150-200 |

3. 420Mpa ULTRA HIGH PRESSURE INTENSIFIER PUMP



Visible glass cover

AMERICAN
ACCUSTREAM



SHANDONG WAMIT CNC TECHNOLOGY CO.LTD

Address: No.1341 of KECHUANG ROAD, GAOXIN DISTRICT, JINAN CITY, CHINA

Mobile: 86-18945047060, **skype:** shuangtai3

Email: sale@waterjetwamit.com, lgmmachinery@foxmail.com

Website: www.machinery.net, www.waterjetwamit.com **WECHAT:** dergirl, **whatsapp:**0086-18945047060

Facebook: www.facebook.com/waterjetcuttingsystems

HP intensifier pump specification

| | |
|---------------------|-----------------|
| Model | WMT3742Z |
| Power (KW) | 37 |
| Max pressure (Mpa) | 420(60000PSI) |
| Max Flow rate | 3.8L/MIN |
| Supercharger number | 1 |
| Dia mm | 0.25/0.3/0.33MM |
| Sand cutting gap | 1.0-1.8 |
| Water cutting gap | 0.15-0.3 |
| voltage | 220V/380V/415V |





SHANDONG WAMIT CNC TECHNOLOGY CO.LTD

Address: No.1341 of KECHUANG ROAD, GAOXIN DISTRICT, JINAN CITY, CHINA

Mobile: 86-18945047060, **skype:** shuangtai3

Email: sale@waterjetwamit.com, lgmmachinery@foxmail.com

Website: www.machinery.net, www.waterjetwamit.com **WECHAT:** dergirl, **whatsapp:** 0086-18945047060

Facebook: www.facebook.com/waterjetcuttingsystems

4. Abrasive sand feeding system

200kg capacity





SHANDONG WAMIT CNC TECHNOLOGY CO.LTD

Address: No.1341 of KECHUANG ROAD, GAOXIN DISTRICT, JINAN CITY, CHINA

Mobile: 86-18945047060, **skype:** shuangtai3

Email: sale@waterjetwamit.com, lgmmachinery@foxmail.com

Website: www.machinery.net, www.waterjetwamit.com **WECHAT:** dergirl, **whatsapp:** 0086-18945047060

Facebook: www.facebook.com/waterjetcuttingsystems

Consumption: 25kg/hour

Other free accessories



SHANDONG WAMIT CNC TECHNOLOGY CO.LTD

Address: No.1341 of KECHUANG ROAD, GAOXIN DISTRICT, JINAN CITY, CHINA

Mobile: 86-18945047060, **skype:** shuangtai3

Email: sale@waterjetwamit.com, lgmmachinery@foxmail.com

Website: www.machinery.net, www.waterjetwamit.com **WECHAT:** dergirl, **whatsapp:**0086-18945047060

Facebook: www.facebook.com/waterjetcuttingsystems

| | |
|-----------------------------------|---|
| High pressure water switch | <ol style="list-style-type: none"> 1.Pneumatic valve, which makes moment open and moment(delayed) shut of the high pressure water. 2.CNC miscellaneous functions makes autocontrol of the high pressure water 3.Blockage pressure can be adjusted at will and realizes drilling in low pressure. 4.The quick-wear parts are easy to be replaced |
| Sand control valve | <ol style="list-style-type: none"> 1.Self-absorption type sand handling. 2.Pneumatic valve overcomes sand blocking and breaking caused by magnetism of the solenoid valve 3.Manual adjustment for sand flow 4.CNC miscellaneous functions makes autocontrol of ABRA |
| Sand hopper | <ol style="list-style-type: none"> 1.Side-attached sand hopper. 2.Side mounted window to watch consumption of ABRA, prompting the operation staff when to replenish sand |

Others(optional)



New

ine





SHANDONG WAMIT CNC TECHNOLOGY CO.LTD

Address: No.1341 of KECHUANG ROAD, GAOXIN DISTRICT, JINAN CITY, CHINA

Mobile: 86-18945047060, **skype:** shuangtai3

Email: sale@waterjetwamit.com, lgmmachinery@foxmail.com

Website: www.machinery.net, www.waterjetwamit.com **WECHAT:** dergirl, **whatsapp:**0086-18945047060

Facebook: www.facebook.com/waterjetcuttingsystems

WAMIT water cutting abrasive sand removal system is dedicated to cleaning waste sand for water cutting equipment. The equipment break through the traditional waste sand to clear the various problems, in international and domestic market it is the most effective, most convenient, most simple water cutting grit removal system.

WA-046-type abrasive sand removal system features:

1. not affect normal waterjet cutting work

The abrasive sand removal device can also work when the water jet cutting machine is working. put the sand suction nozzle into the waterjet tank, abrasive sand removal work can be carried out. At the same time it will not affect the completion of Desanding waterjets work properly. The device is fully avoid the traditional sand must be shut down, the water tank must be drained, after exhausted sand you need to fill with water again in before.

2. Simple operation, sand removal thoroughly, very fast

The device requires only five steps in the operation can be completed Desanding: 1, equipment in place → 2, turn on the air supply → 3, the sand suction nozzle into



SHANDONG WAMIT CNC TECHNOLOGY CO.LTD

Address: No.1341 of KECHUANG ROAD, GAOXIN DISTRICT, JINAN CITY, CHINA

Mobile: 86-18945047060, **skype:** shuangtai3

Email: sale@waterjetwamit.com, lgmmachinery@foxmail.com

Website: www.machinery.net, www.waterjetwamit.com **WECHAT:** dergirl, **whatsapp:**0086-18945047060

Facebook: www.facebook.com/waterjetcuttingsystems

the tank → 4, turn on the gas source switch degritting → 5 After sand full stop dumping waste sand. Desanding rate of the device at more than 90%, if the Sand is much, but mud and other impurities (plastic, paper, nylon mesh, etc.) is not much, finish work only needs 30 minutes.

3. Large capacity

The device diameter is 630mm, height is 2.2M, sand removal capacity is up to 460 liters. For example 2X3M tank, clear 3-4 cans, you can continue to use.

4. thick steel plate, perfect hydraulic system

The device uses 8mm thick steel tank, in the tank internal integration of advanced water-sand separation system. Base is made of 20mm thick steel plate, durable. Switch door manual hydraulic system, and a safety bolt that door switch and sealing easy, safe and convenient.

5. powerful, stable

The device uses the most advanced pneumatic fluid pump, driven by the high-pressure gas can generate a steady stream of high-pressure water, provide the impetus for rapid Desanding

6. Energy Saving

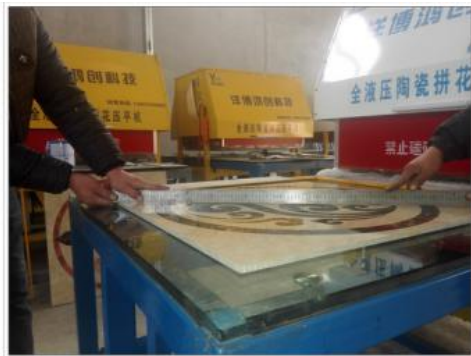
The device does not process the whole Desanding loss of water in the tank, no waste water.

Note: 1, the gas source required 12mm diameter pipe, the gas pressure to 0.4 ~ 0.8MPa, gas supply must be greater than 0.6m³ / min.

2, before remove sand, the system must be filled with water. After finish work, the water go into the tank and the waste sand go into the removing system.

This system can also recycle the abrasive sand, reduce your abrasive sand cost, labor cost, power cost. PLEASE CHECK THE VIDEO ON MY FACEBOOK!

Fully hydraulic ceramic mosaic flattening machine





SHANDONG WAMIT CNC TECHNOLOGY CO.LTD

Address: No.1341 of KECHUANG ROAD, GAOXIN DISTRICT, JINAN CITY, CHINA

Mobile: 86-18945047060, **skype:** shuangtai3

Email: sale@waterjetwamit.com, lgmmachinery@foxmail.com

Website: www.machinery.net, www.waterjetwamit.com **WECHAT:** dergirl, **whatsapp:**0086-18945047060

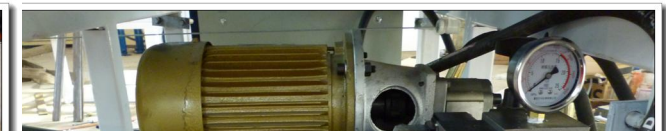
Facebook: www.facebook.com/waterjetcuttingsystems

Introduction

Our fully hydraulic ceramic mosaic flattening machine is used for the processing of marble mosaic. It is with double working table which will save flattening time. The result is very smooth and no rework. Traditional flat way by workers at least have 10% rework. Our machine can make 30 pcs in one day, but workers can only make 10-12 pcs in one day, and our machine can work 24 hours one day.

Making one marble mosaic generally need 3 people, but our machine only need one people. can do any shape within 1m*1m size. Low noise, no easy-wear spare parts. The most important is you needn't hire specialist. Anyone can make marble mosaic by our machine. The electricity consumption is one 2 degrees in one hours, and it can cooperate with 2 sets water jet cutting machine.

Details





SHANDONG WAMIT CNC TECHNOLOGY CO.LTD

Address: No.1341 of KECHUANG ROAD, GAOXIN DISTRICT, JINAN CITY, CHINA

Mobile: 86-18945047060, **skype:** shuangtai3

Email: sale@waterjetwamit.com, lgmmachinery@foxmail.com

Website: www.machinery.net, www.waterjetwamit.com **WECHAT:** dergirl, **whatsapp:** 0086-18945047060

Facebook: www.facebook.com/waterjetcuttingsystems



SHANDONG WAMIT CNC TECHNOLOGY CO.LTD

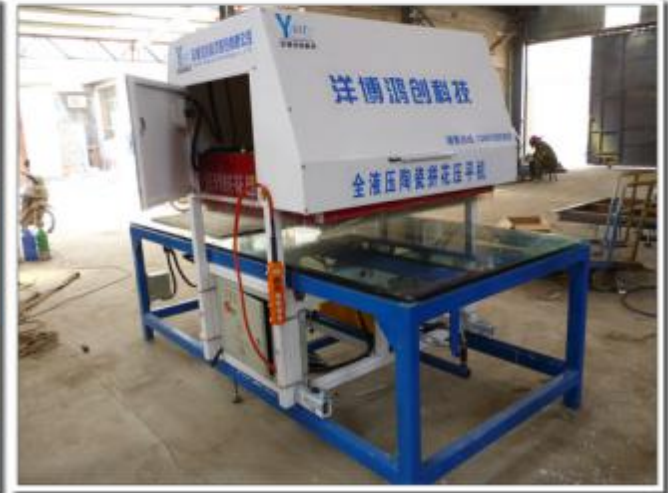
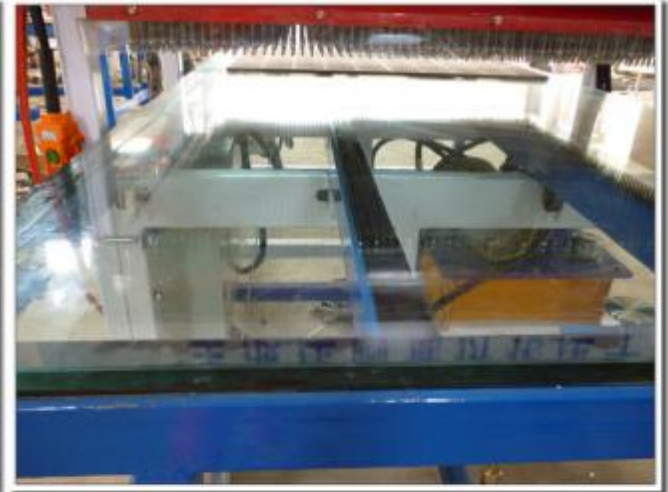
Address: No.1341 of KECHUANG ROAD, GAOXIN DISTRICT, JINAN CITY, CHINA

Mobile: 86-18945047060, **skype:** shuangtai3

Email: sale@waterjetwamit.com, lgmmachinery@foxmail.com

Website: www.machinery.net, www.waterjetwamit.com **WECHAT:** dergirl, **whatsapp:** 0086-18945047060

Facebook: www.facebook.com/waterjetcuttingsystems





SHANDONG WAMIT CNC TECHNOLOGY CO.LTD

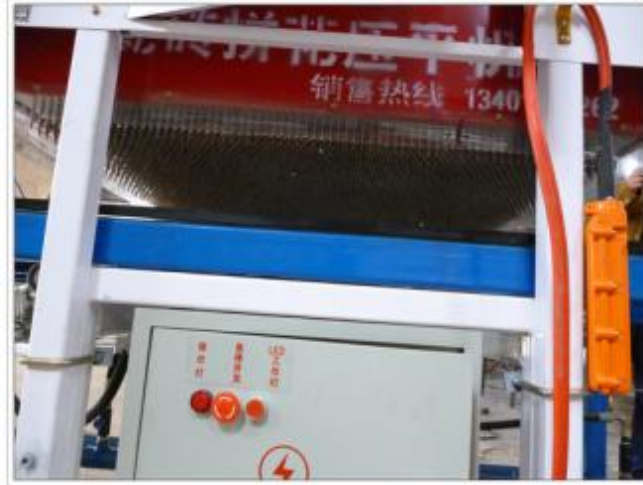
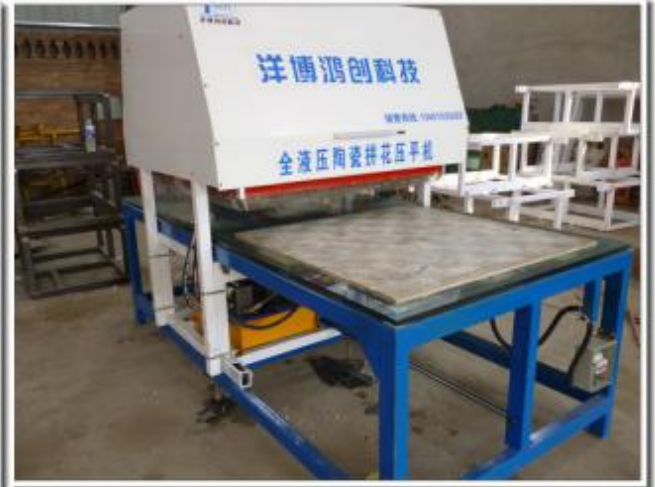
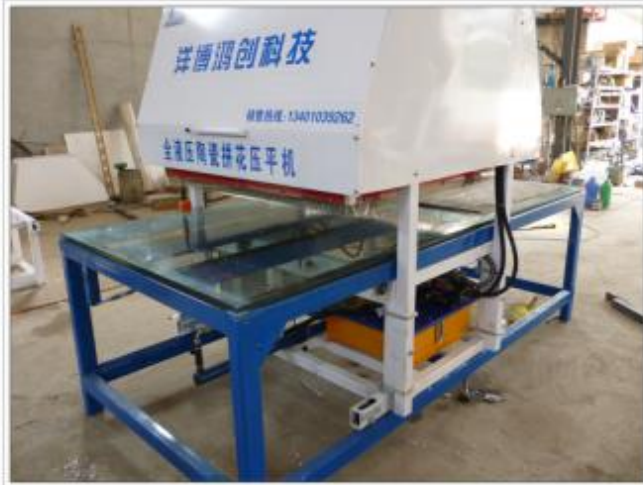
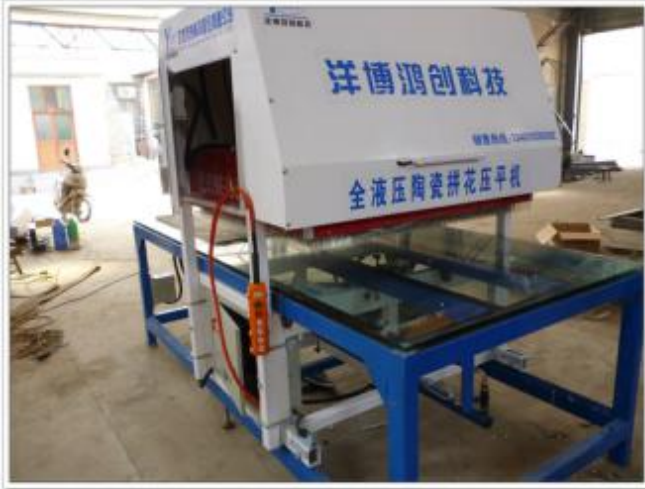
Address: No.1341 of KECHUANG ROAD, GAOXIN DISTRICT, JINAN CITY, CHINA

Mobile: 86-18945047060, **skype:** shuangtai3

Email: sale@waterjetwamit.com, lgmmachinery@foxmail.com

Website: www.machinery.net, www.waterjetwamit.com **WECHAT:** dergirl, **whatsapp:** 0086-18945047060

Facebook: www.facebook.com/waterjetcuttingsystems





SHANDONG WAMIT CNC TECHNOLOGY CO.LTD

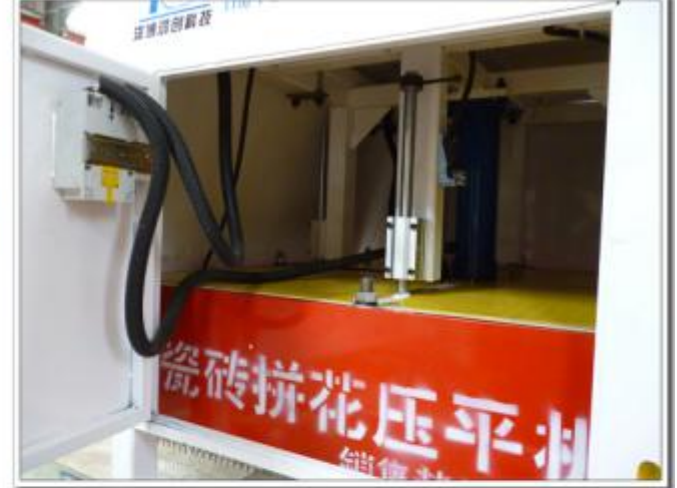
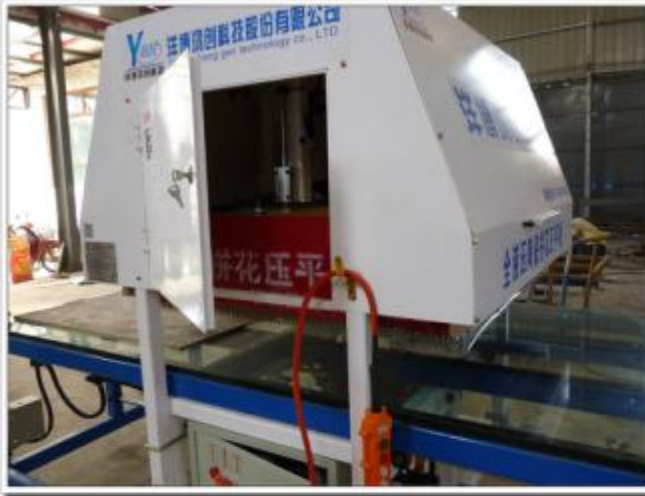
Address: No.1341 of KECHUANG ROAD, GAOXIN DISTRICT, JINAN CITY, CHINA

Mobile: 86-18945047060, **skype:** shuangtai3

Email: sale@waterjetwamit.com, lgmmachinery@foxmail.com

Website: www.machinery.net, www.waterjetwamit.com **WECHAT:** dergirl, **whatsapp:** 0086-18945047060

Facebook: www.facebook.com/waterjetcuttingsystems





SHANDONG WAMIT CNC TECHNOLOGY CO.LTD

Address: No.1341 of KECHUANG ROAD, GAOXIN DISTRICT, JINAN CITY, CHINA

Mobile: 86-18945047060, **skype:** shuangtai3

Email: sale@waterjetwamit.com, lgmmachinery@foxmail.com

Website: www.machinery.net, www.waterjetwamit.com **WECHAT:** dergirl, **whatsapp:**0086-18945047060

Facebook: www.facebook.com/waterjetcuttingsystems

Specification

Size: 2.5m*1.3m*1.8m(L*W*H)

Tempered glass table thickness: 19mm

Table material: A grade Tempered glass with CCC certificate.

Drive type: fully hydraulic

Oil pressure:0.7Mpa(can be adjusted)

Moving speed: 1.5-1.8m/min(can be adjusted)

Power: 4.5KW (in winter), 2.5KW(in summer)

Heating time: 10-12 minutes

Processing size: 1m*1m

Flattening point: 6000 points

The distance between each point: 9mm

Machine accessories:

1. Holding fixture 1 set
2. Hot melt glue stick 5 pcs
3. Hot melt glue gun 1 set



SHANDONG WAMIT CNC TECHNOLOGY CO.LTD

Address: No.1341 of KECHUANG ROAD, GAOXIN DISTRICT, JINAN CITY, CHINA

Mobile: 86-18945047060, **skype:** shuangtai3

Email: sale@waterjetwamit.com, lgmmachinery@foxmail.com

Website: www.machinery.net, www.waterjetwamit.com **WECHAT:** dergirl, **whatsapp:** 0086-18945047060

Facebook: www.facebook.com/waterjetcuttingsystems

Comparison of our machine and worker for making one piece ceramic mosaic:

| | Worker quantity | Processing time | Rework rate | efficiency | output | Easy-Wear spare parts | Processing size | Specialist need | Electricity consumption |
|----------------|-----------------|--|-------------|---|----------------------|-----------------------|--------------------|--|-------------------------|
| machine | 1 | In summer, 7 minutes, in winter, 12 minutes | 0 | One machine can work for 2 sets water jet cutting machine | 30 pcs in one day | no | 1m*1m any shape | No need specialist, can reduce worker cost | 2 degree in one hour |
| worker | 3 | In summer, at least 30 minutes, in winter, at least 15 minutes | 10% | Depend on the worker processing speed | 10-12 pcs in one day | no | Any shape and size | Need specialist | No need electricity |

Parts drawing



SHANDONG WAMIT CNC TECHNOLOGY CO.LTD

Address: No.1341 of KECHUANG ROAD, GAOXIN DISTRICT, JINAN CITY, CHINA

Mobile: 86-18945047060, **skype:** shuangtai3

Email: sale@waterjetwamit.com, lgmmachinery@foxmail.com

Website: www.machinery.net, www.waterjetwamit.com **WECHAT:** dergirl, **whatsapp:** 0086-18945047060

Facebook: www.facebook.com/waterjetcuttingsystems



CUTTING SPEED

| Material | Thickness (mm) | Cutting Speed of 420MPa (mm/min) |
|----------|----------------|----------------------------------|
| Marble | 20 | 410 |



SHANDONG WAMIT CNC TECHNOLOGY CO.LTD

Address: No.1341 of KECHUANG ROAD, GAOXIN DISTRICT, JINAN CITY, CHINA

Mobile: 86-18945047060, **skype:** shuangtai3

Email: sale@waterjetwamit.com, lgmmachinery@foxmail.com

Website: www.machinery.net, www.waterjetwamit.com **WECHAT:** dergirl, **whatsapp:**0086-18945047060

Facebook: www.facebook.com/waterjetcuttingsystems

| | | |
|--------------------|----|------|
| | 30 | 360 |
| Granite | 20 | 380 |
| | 30 | 250 |
| Glass Brick | 12 | 1100 |
| Glass | 5 | 1610 |
| | 10 | 725 |
| | 20 | 420 |
| Glue Chipped Glass | 10 | 630 |
| Sponge | 50 | 6500 |
| Foam | 50 | 6500 |
| Wood | 10 | 1350 |
| | 50 | 270 |
| Steel | 2 | 800 |
| | 4 | 570 |
| | 6 | 520 |
| | 8 | 360 |
| | 10 | 260 |
| | 15 | 150 |
| | 20 | 60 |
| | 60 | 26 |
| Laminates | 10 | 2000 |
| Aluminum | 5 | 970 |
| Copper | 5 | 460 |



SHANDONG WAMIT CNC TECHNOLOGY CO.LTD

Address: No.1341 of KECHUANG ROAD, GAOXIN DISTRICT, JINAN CITY, CHINA

Mobile: 86-18945047060, **skype:** shuangtai3

Email: sale@waterjetwamit.com, lgmmachinery@foxmail.com

Website: www.machinery.net, www.waterjetwamit.com **WECHAT:** dergirl, **whatsapp:**0086-18945047060

Facebook: www.facebook.com/waterjetcuttingsystems

| | | |
|--------------------------------|---|------|
| Glass Fibre Reinforced plastic | 2 | 1650 |
|--------------------------------|---|------|

- The above parameters is test data, only for reference
- The main factor of affecting cutting surface quality, cutting speed is the pressure and pressure stability. And meanwhile the cutting speed and cutting surface quality is also related.
- Abrasive quality, sand amount, nozzle diameter, orifice diameter and the matching of them will effect the cutting parameters.
- General kerf width is about 1-1.5mm, drill hole diameter is about 1.5-2.0mm. the kerf width is also depended on material and thickness.

Usage: rubber gasket , hexagon sponge , leather and metal composite material , nylon material fiberglass , , cut hot melted holder , glass pen holder , cut hot melted glass handicraft, glass cutting sample , stainless steel carriage , stainless steel map , 100mm stainless steel and so on.

CUTTING COST (420MPA)

| ITEM | | NAME | PRICE (USD) | LIFE | COST PER HOUR (USD) |
|-------|---|----------|-------------|-----------|---------------------|
| POWER | 1 | water | | 3.1L/min | 0.1 |
| | 2 | electric | | 37Kw | 3 |
| | 3 | abrasive | 170.00 /mt | 20-25kg/H | 3.4 |
| WEAR | 4 | orifice | 15.00 /per | 50H | 0.3 |



SHANDONG WAMIT CNC TECHNOLOGY CO.LTD

Address: No.1341 of KECHUANG ROAD, GAOXIN DISTRICT, JINAN CITY, CHINA

Mobile: 86-18945047060, **skype:** shuangtai3

Email: sale@waterjetwamit.com, lgmmachinery@foxmail.com

Website: www.machinery.net, www.waterjetwamit.com **WECHAT:** dergirl, **whatsapp:** 0086-18945047060

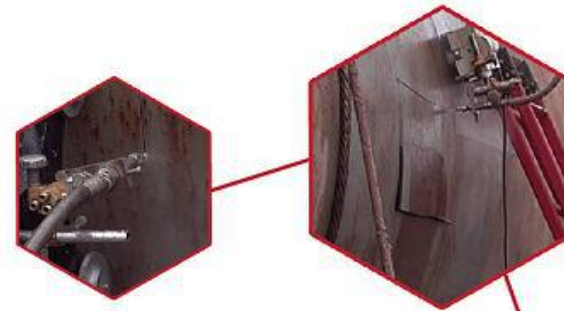
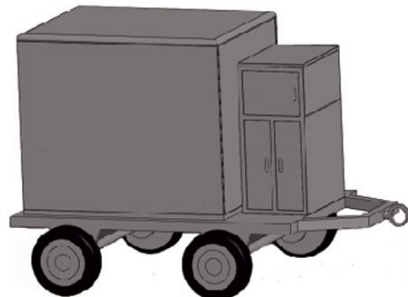
Facebook: www.facebook.com/waterjetcuttingsystems

| | | | | | |
|----------------------------------|----|---|-------------|----------|------|
| PARTS | 5 | nozzle (imported) | 150.00 /per | 150-200H | 1 |
| | 6 | on-off valve assemblies(one set) | 50,00/set | 500H | 0.1 |
| | 7 | cutting head | 75.00/per | 500H | 0.15 |
| | 8 | HP cylinder | 1500.00/per | 2,000H | 0.75 |
| | 9 | Check valve main body | 900.00/per | 2,000H | 0.45 |
| | 10 | High pressure assemblies(1 set) (imported) | 200.00/set | 1000H | 0.2 |
| | 11 | One-way valve assemblies(1 set) | 30.00/set | 500H | 0.06 |
| | 12 | other | | | 1 |
| USD 10.54/H(420Mpa cost) | | | | | |

UHP Potable waterjet cutting machine

Ultra high-pressure scene waterjet cutting equipment appearance and composition

1. Three piston pump
2. 22KW motor
3. Front Pump
4. abrasive feeder
5. Control system
6. Actuator
7. Toolbox





SHANDONG WAMIT CNC TECHNOLOGY CO.LTD

Address: No.1341 of KECHUANG ROAD, GAOXIN DISTRICT, JINAN CITY, CHINA

Mobile: 86-18945047060, **skype:** shuangtai3

Email: sale@waterjetwamit.com, lgmmachinery@foxmail.com

Website: www.machinery.net, www.waterjetwamit.com **WECHAT:** dergirl, **whatsapp:**0086-18945047060

Facebook: www.facebook.com/waterjetcuttingsystems

8. Move Trailer

The significance of the scene cut of portable waterjet cutting machine

Waterjet scene cut is limited and constrained by environmental conditions, and because of this, the waterjet scene cut has unique significance. Sometimes, there is pressure, toxic, flammable and explosive things, and other known and unknown factors, under this situation, portable waterjet cutting machine can be used. Traffic accident scene, not to cause an explosion and rescue trapped people, cold cut is needed, cut shells for risk, sudden emergency (fire, earthquake, etc.) the site also requires the demolition site broken water cutting jobs, in short, on-site water cutting operating is widely used because of no heat.



AFTER SERVICE WARRANTY

1. The seller is liable for troubles resulting from performance and quality deficiency within One year (2000 hours). In this case the seller offer diagrams or other paper materials and solve the problems by phone, fax or email with buyer's help at site of operation. Buyer is liable for troubles resulting from improper operation. In this case the buyer shall carry repair expenses and the seller shall provide timely support not later than 7 days from time of trouble. (Please see warranty for HP components' useful life)
2. The seller offer technical support for life without charge.
3. The buyer can purchase spare parts and wearing parts from parent company or its branches and agents. The prices and service fees are the same form branch to branch.

b. Training

Seller offer demonstration disk, tool kit, toolbox and some spare parts without charge.

Seller also provides 7-10days training for setting up, operating and maintenance.

Buyer has two choices for training:

1. Seller's engineer goes to Buyer's place, Buyer shall afford visa cost, round-trip air-tickets, food & hotel



SHANDONG WAMIT CNC TECHNOLOGY CO.LTD

Address: No.1341 of KECHUANG ROAD, GAOXIN DISTRICT, JINAN CITY, CHINA

Mobile: 86-18945047060, **skype:** shuangtai3

Email: sale@waterjetwamit.com, lgmmachinery@foxmail.com

Website: www.machinery.net, www.waterjetwamit.com **WECHAT:** dergirl, **whatsapp:**0086-18945047060

Facebook: www.facebook.com/waterjetcuttingsystems

2. Buyer comes to Seller's company and the fees under his account. Training period is 7-10 days.

Training contents

- intensifier principle
- introduction of every parts
- wear parts changing
- common trouble removal
- table maintenance
- on-off valve, cutting head and abrasive controller maintenance.
- drawing designing and programming
- software operating, parameters setting and saving
- Equipment practice

we now have after-service department in America, Russia, South Africa, Ecuador, UK, Argentina, Chile, Mexico, Australia, Saudi Arabia, Malaysia, Vietnam and you can share local service!

<https://plus.google.com/u/0/b/104575345540626264400/>

https://www.youtube.com/channel/UCY4EcRceB8_MKsY6L40u8PQ?view_as=subscriber

<iframe width="560" height="315" src="https://www.youtube.com/embed/QSOu8O4xHhk" frameborder="0" allow="autoplay; encrypted-media" allowfullscreen></iframe>

<https://youtu.be/QSOu8O4xHhk>

<https://www.facebook.com/hoistwinch>



SHANDONG WAMIT CNC TECHNOLOGY CO.LTD

Address: No.1341 of KECHUANG ROAD, GAOXIN DISTRICT, JINAN CITY, CHINA

Mobile: 86-18945047060, **skype:** shuangtai3

Email: sale@waterjetwamit.com, lgmmachinery@foxmail.com

Website: www.machinery.net, www.waterjetwamit.com **WECHAT:** dergirl, **whatsapp:** 0086-18945047060

Facebook: www.facebook.com/waterjetcuttingsystems