
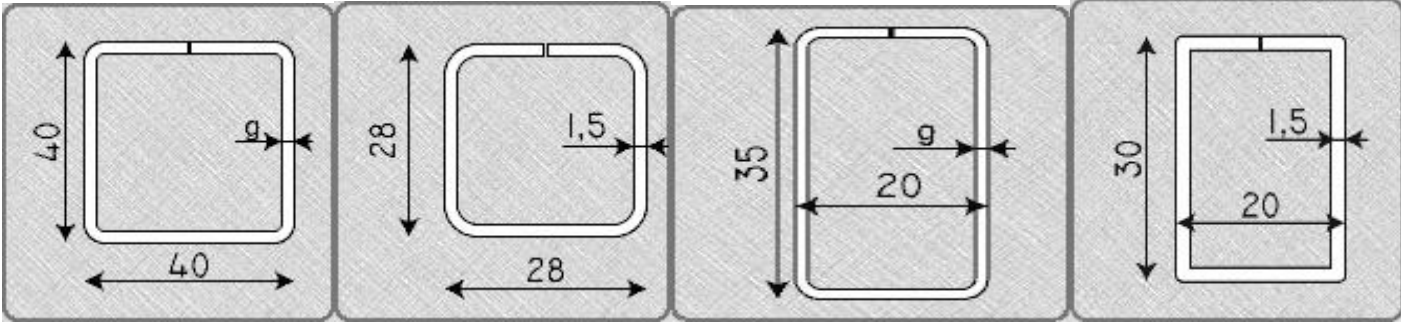


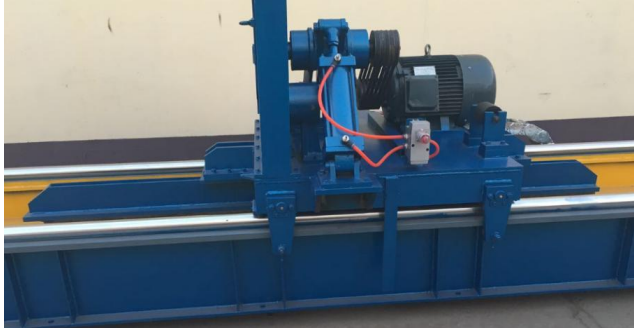

**OFFER SHEET**

PRODUCTS	Description	Specs
<p>Welding pipe forming machine</p>	<ol style="list-style-type: none"> <li>1. Matching material:Low Carbon steel</li> <li>2. Material thickness range:0.5-2mm</li> <li>3. Solid state High frequency welder (GGP100KW) hydraulic station:5.5kw</li> <li>4. Forming speed: 0-70m/min</li> <li>5. Quantity of rollers: 12</li> <li>6. Shaft Material and diameter: <math>\phi</math> 55mm, material is 45#</li> <li>7. Controlling system: PLC</li> <li>8. Voltage: 380V/ 3phase/ 50 Hz</li> <li>9. Material of forming rollers: Cr12 forge steel , coated with chromed treatment</li> <li>10. Cut: Flying saw</li> </ol>	
<p>Panel profile</p>		

## YINGYEE MACHINERY AND TECHNOLOGY SERVICE CO., LIMITED

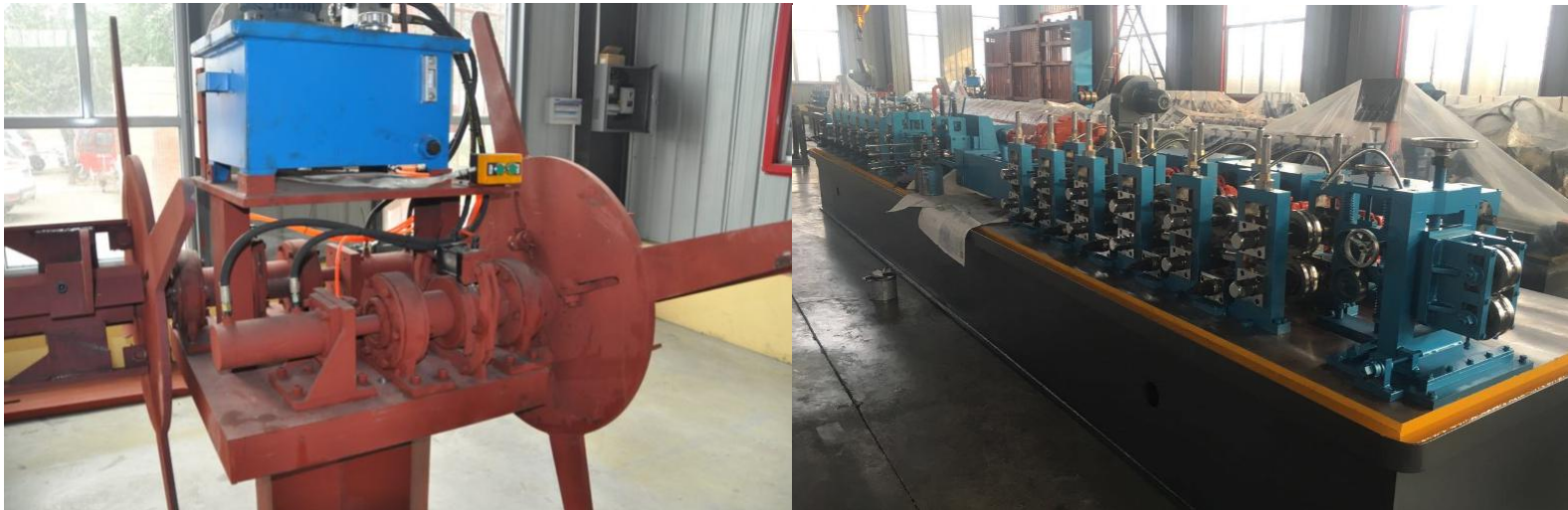
<p>Flow chat</p>	<p>Double heads decoiler—material straightening and flattening—roll forming—plc control--- Fly blade—receiving table</p>	
<p>Double heads decoiler</p>	<p>Rotary type to change coils easily Coil weight: max. 3.0 tons / head</p>	
<p>Cage Loop</p>	<p>Feeding speed: 200m/min Storage: 300-400m</p>	

## YINGYEE MACHINERY AND TECHNOLOGY SERVICE CO., LIMITED

<p style="text-align: center;">Fly blade</p>	<p>Saw disk: OD400mm×ID40mm×2.8mm</p> <ul style="list-style-type: none"> <li>- Saw waver: Pneumatic</li> <li>- Pipe clamp: Pneumatic</li> <li>- Saw carriage travel: Rack and pinion with gear lath</li> <li>- Motor for travel: DC 11KW</li> <li>- Motor for cutting: AC 11KW</li> <li>- Length Tolerance: 0-6mm</li> </ul>	
<p style="text-align: center;">receiving table</p>	<p>Roller conveyer 10 meter , fully automatic</p>	
<p style="text-align: center;">Price</p>	<p><b>EXW: \$150000</b> (Double heads decoiler—material straightening and flattening—roll forming—plc control--- Fly blade—receiving table)</p> <p>Roller dies: <b>\$5000 per sets</b>, \$15000 for 3 sets dies.</p> <p>Total price: <b>\$165000</b></p>	
<p style="text-align: center;">Remark</p>	<ol style="list-style-type: none"> <li>1. Delivery date: 45 days after receiving deposit.</li> <li>2. Sales clause: 30%deposit by TT, 70% balance by L/C before shipping.</li> <li>3. Warranty: 1 years</li> <li>4. Quotation validity: 90 days.</li> </ol>	



**YINGYEE MACHINERY AND TECHNOLOGY SERVICE CO., LIMITED**



Email: [sale3@yingyee.cn](mailto:sale3@yingyee.cn)

Phone: +86-15369192246

Web: [www.yingyee.cn](http://www.yingyee.cn)

**YINGYEE MACHINERY AND TECHNOLOGY SERVICE CO., LIMITED**



Email: [sale3@yingyee.cn](mailto:sale3@yingyee.cn)

Phone: +86-15369192246

Web: [www.yingyee.cn](http://www.yingyee.cn)



## YINGYEE MACHINERY AND TECHNOLOGY SERVICE CO., LIMITED



Email: [sale3@yingyee.cn](mailto:sale3@yingyee.cn)

Phone: +86-15369192246

Web: [www.yingyee.cn](http://www.yingyee.cn)