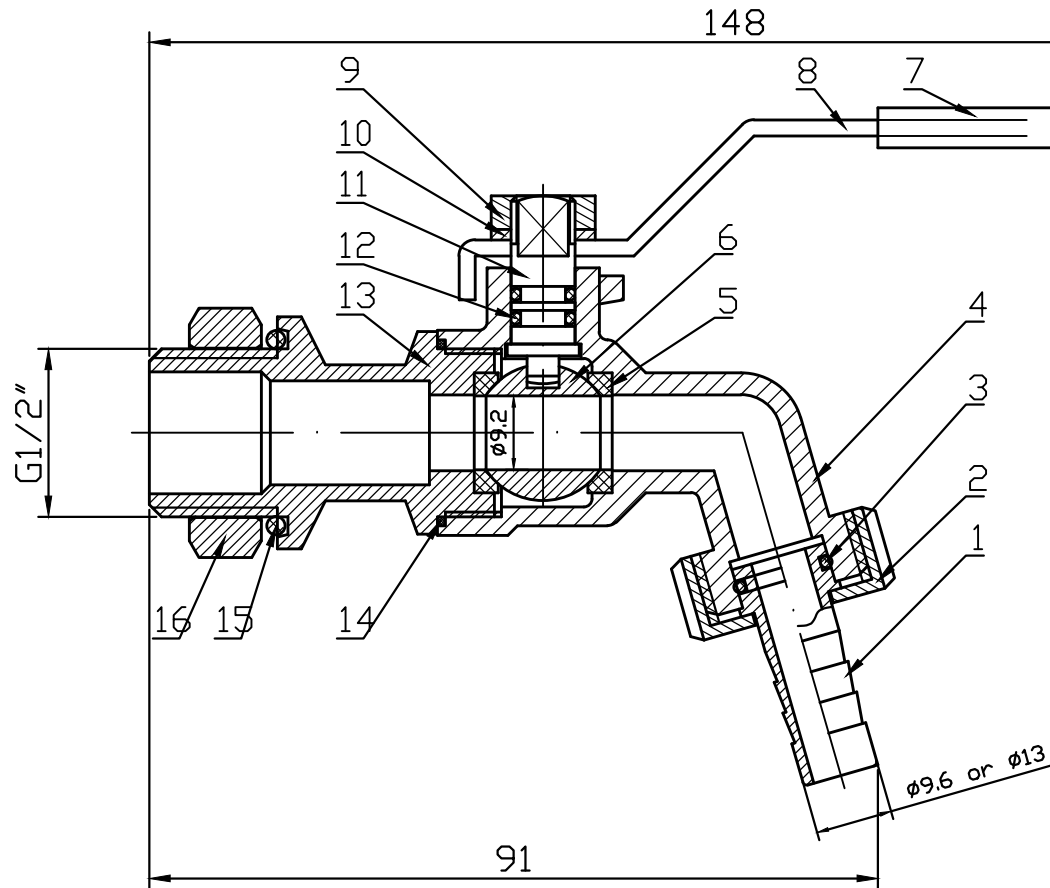


Features:

1. Pressure Rating: 200PSI/PN16
2. Working Temperature: -10° C-150° C
3. Investment Casting
4. PED97/23 EC
5. Casting Approved AD2000-W0
6. Thread: ASME B1.20.1
BS21, DIN2999/259, ISO228-1, ISO7/1, JIS B 0203
7. Outlet: 9.6mm or 13mm
8. Inspection Testing: API598, EN12266



| | | | |
|-----|--------------|---------------|-------|
| 16 | NUT | 304 | 1 |
| 15 | O-RING | FOOD SILICONE | 1 |
| 14 | JOINT GASKET | PTFE | 1 |
| 13 | CAP | CF8/CF8M | 1 |
| 12 | O-RING | NBR | 2 |
| 11 | STEM | 304/316 | 1 |
| 10 | WASHER | 304 | 1 |
| 9 | STEM NUT | 304 | 1 |
| 8 | HANDLE | 304 | 1 |
| 7 | HANDLE COVER | PLASTIC | 1 |
| 6 | BALL | 304/316 | 1 |
| 5 | BALL SEAT | PTFE | 2 |
| 4 | BODY | CF8/CF8M | 1 |
| 3 | O-RING | FOOD SILICONE | 1 |
| 2 | NUT | CF8/CF8M | 1 |
| 1 | HOSE | 304/316 | 1 |
| NO. | PART NAME | MATERIAL | Q' TY |

| | | | | |
|----|----|----|----|----|
| 制图 | 审核 | 材质 | 比例 | 备注 |
|----|----|----|----|----|

| | |
|------|------------------------|
| 产品名称 | Hose Tap (CW MT/CW HY) |
|------|------------------------|

Cangzhou Co-Win Metal Products Co., Ltd