



Shandong LEWIN Medical Equipment Co., Ltd. is a professional medical equipment manufacturer with certificates, such as CE, FDA, ISO9001, ISO13485, SGS, Rohs, MHRA, FSC(Free Sales Certificate) and located in Qufu city of Shandong Province, China. We have R&D center in Shandong, Shanghai, Shenzhen to launch new products to meet the needs for hospital every year. We have more than 50,000 square meters workshop and R&D building, which is characterized by high quality products and advanced technology.

LEWIN ADD: NO. 2 FAZHAN AVENUE, ECONOMIC DEVELOPMENT ZONE, QUFU, SHANDONG PROVINCE, CHINA 273100
 TEL: +86-537-3748923, FAX: +86-537-3748935
 EMAIL: lewin@lewinmed.com
 LEWIN MEDICAL EQUIPMENT CO. LTD. Website: www.lewinmed.com

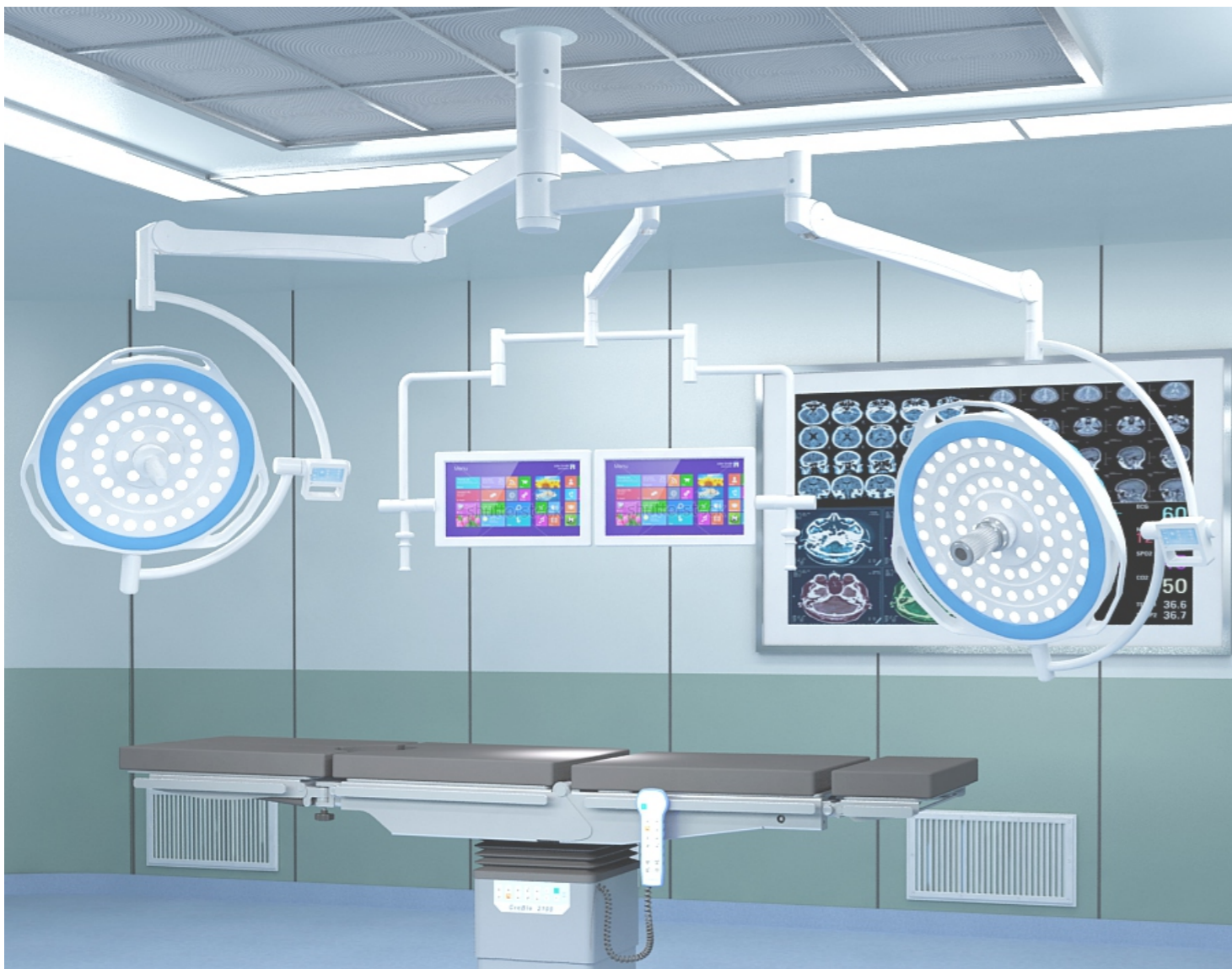


LED OPERATING LIGHT WITH CAMERA SYSTEM
CreLed 5700/ 5500

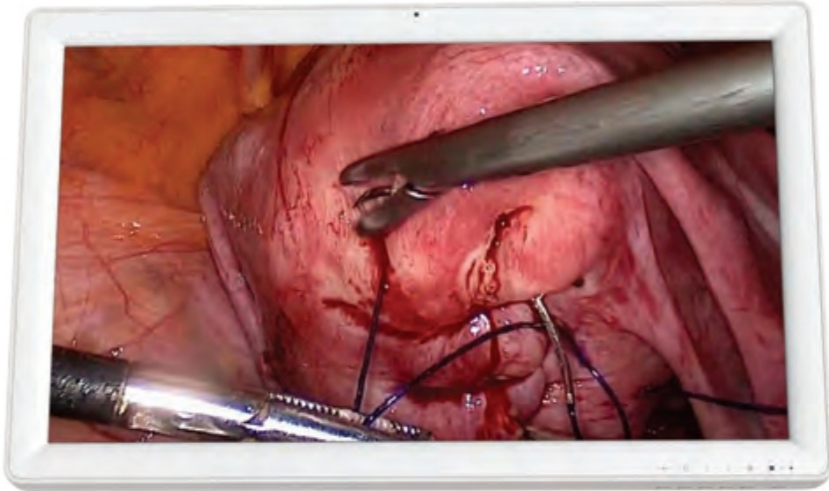
LEWIN MEDICAL EQUIPMENT CO. LTD.



STRIVING FOR EXCELLENCE

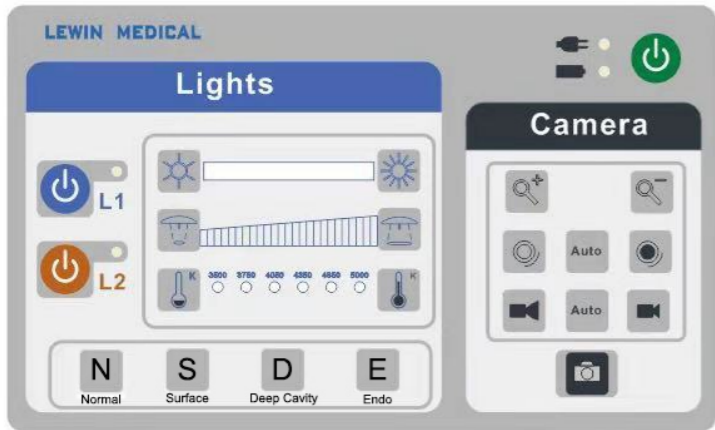


26 - 46" MEDICAL GRADE FULL HD MONITOR



FEATURES	PARAMETERS
Panel Type	IPS
Backlight	LED
Size	26"
Active Display	941.2 X 529.4mm
Video Input	HD-SDI, DVI-I, VGA, CVBS, S-VIDEO, YPbPr, RGBS, HDMI
Video Output	CVBS/HD-SDI
Power Requirements	100~240V AC, 50/63Hz

WALL CONTROL PANEL



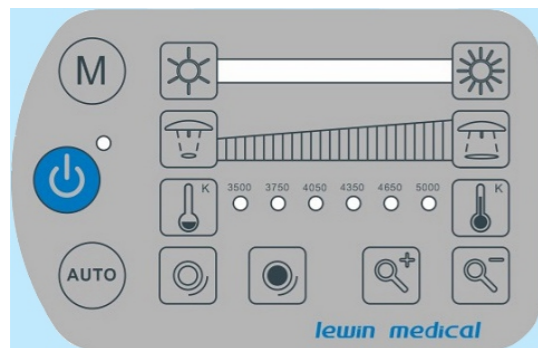
- ON/ OFF switch with LED light
- Battery Indicator
- L1 and L2 switch for Lamp1 and Lamp2
- Intensity Control in 12 steps
- Electric Focus adjustment
- Six steps adjustable color temperature (3500-5000K)
- Modes (Normal, Surface, Deep Cavity & Endo)
- Camera Zoom In and Out
- Aperture Control (Manual & Auto)
- Focus Control (Manual & Auto) with White Balance

MEDICAL GRADE FULL HD DVR



- Adopted with GM8180 SOC chip, in-built with ARM9 CPU core with high speed, high integration, low power consumption, small but complete in function. Adopted with Linux real time operation system, with strong flexibility, strong network transmission ability and stability.
- Enhanced H.264 algorithm (main profile), 4 times of normal H.264 algorithm compression, makes compression files as small as 60% of those by normal H.264, especially suitable for network transmission.
- Window and graphic interface are user friendly and easy to operate, with menu note function, can be controlled by mouse, front panel, remote controller etc. Preview in D1, support motion detection, OSD, real-time listening in.
- Support 4 channel video and audio playback real-time, support file fast playback, fast forward & play etc.
- 1 TB hard disk drive for storage of images and videos, supports USB 2.0 flash drive for backup, CD/DVD and HIS.
- Video files could be searched by video type, time, date etc. Auto screen saver, to save energy.
- Can combine digital video matrix output system with 1708MD/1702MD
- High end software that supports burning, editing etc.

CONTROL PANEL ON DOME



- ON/ OFF switch with LED light
- Intensity Control in 12 steps
- Electric Focus adjustment
- Six steps adjustable color temperature (3500-5000K)
- Modes (Normal, Surface, Deep Cavity & Endo)
- Aperture Control (Manual & Auto)
- Camera Zoom In and Out

SONY FULL HD FCB - EV 7100 MEDICAL GRADE CAMERA



FEATURES

PARAMETERS

Image device	3 1/3-type Exmor CMOS View HAD CCD
Effective picture elements	2.3 million pixel
Video standard	HD 1080P/i (1920 x 1080)
Horizontal resolution	On/Off (On: 530 TV lines)
Lens	20 x optical zoom, f=4.1 mm (wide) to 73.8 mm (tele), F1.4 to F3.0
Digital zoom	12x (312x with optical zoom)
Viewing angle (H)	48.0° (wide) to 2.8° (tele)
Minimum object distance	290 mm (wide), 800 mm (tele)
Humidity	95% rel humidity
Minimum illumination	1/60 s mode: 0.7 lx (typical) (F1.4, 50IRE) at 11 x 1/4 s mode: 0.07 lx (typical) (F1.4, 50IRE) at 11x
S/N ratio	More than 50 dB (weight ON)
Electronic shutter	1/ 2 -1/10,000s
AE control	Auto, Manual, Priority mode (shutter priority & iris priority), Bright, EV compensation, Backlight compensation, Slow AE
Color Reproduction	Vivid (1.43 dEab)
Video norm	PAL
Privacy zone masking	On/Off (8 masks per view/24 masks presets in the entire viewing range when integrated into a PTZ camera - 14 colors, mosaic)
Character generator	Mode display/Multi-line OSD (OSD has priority over Mode display)
White balance	Auto
Focusing system	Auto (Sensitivity: normal, low), One-push AF, Manual, Infinity, Interval AF, Zoom Trigger AF
Picture effects	e-Flip, Nega Art, Black & White, Mirror Image
Zoom switch	TELE, WIDE
Video output	VBS: 1.0 Vp-p (sync negative), Y/C, component for analog Y/Pb/Pr, component for digital Y/Cb/Cr through LVDS
Signal format	SMPTE 274/ SMPTE 296
Storage temperature	-20 to 60 °C (-4 to 140 °F)
Operating temperature	0 to 50 °C (32 to 122 °F)
Power requirements	6 to 12 V DC
Power consumption	2.6 W (motors inactive), 4.4 W (motors active)

DIFFERENT MODES



Endo mode in which tiny LED's create an unparalleled, uniform glow in the room allowing surgeons to concentrate on the monitors during minimal invasive surgery (MIS) and endoscopy procedures in darkened operation theater.

Deep Cavity helps in visualization and distinguish between small tissues, light equipped with multicolor LEDs and the combination of multicolor module make it possible to adjust the color temperature, as required by surgeons on depth to wound area with quality light.



Surface mode for minor surgery with accurate color reproduction, exceptionally high light output without heat development and exact positioning of the laminar support personnel during medical procedures.

Normal mode is used for normal OT surgery and while running on normal mode all the features like illumination control, color temperature adjustment and electric focus can be used.





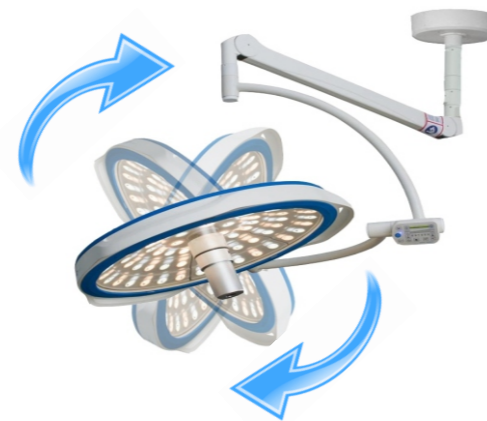
Shadow free illumination with sensor system technology and Focus/ Spot diameter of 15 to 30 cm



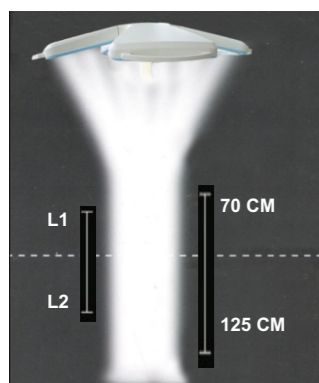
Light field/ Focus adjustment through sterilizable and detachable handle at the center of the light head.



360° rotation of light head and arms ensures the dome along with camera can be moved easily and freely in all directions.



Depth of Illumination - The distance between the points of 20% illumination intensity above and below the center point is 70 - 125 cms



TECHNICAL SPECIFICATIONS

PARAMETERS	FEATURES MODEL: CreLed 5700	FEATURES MODEL: CreLed 5500
Illumination (Lux) at 1 meter distance	1,60,000 Lux	1,20,000 Lux
Spring Arm Length	600mm - 1200mm	600mm-1200mm
Luminance Adjustment/ Dimming range in 12 steps	10 - 100% (16,000 - 1,60,000 Lux)	10 - 100% (12,000 - 1,20,000 Lux)
Electric Focusing size (circular)	15-30 cm	15-30 cm
Color Temperature (adjustable-6 steps)	3500, 3750, 4050, 4350, 4650 & 5000K	3500, 3750, 4050, 4350, 4650 & 5000K
Color Rendering Index Ra	96	96
Red Rendering Index R9	96	96
Lighting Depth/ Depth of Illumination	70 - 125cm	70 - 125cm
Diameter light head dome	70cm	50cm
Rotation in all pivot joints	360°	360°
Temp increase in the operating field near Surgeon's head	<1° C.	<1° C.
Power Consumption(W)	78W	48W
NO. of LED's	78	48
Power supply	220 - 240V, 50 - 60Hz	220 - 240V, 50 - 60Hz
Certifications/ Approvals	ISO 9001, ISO 13485, European CE Class I with IEC 60601-1 & IEC 60601-2-41 & US FDA	

- Micro processor control multi-reflector technology for clear tissue visualization and zero image interference while electro surgery.
- Pure white LED light technology with low heat generation from IR Radiation for better illumination and visualization of blood vessels and the light contrast is better for surgery.
- Imported LED with a lifespan of 50,000 hours.
- Proper central illuminance - Provide shadow free illumination with sensor system technology that controls the LED illumination automatically.
- Light yields unique counter balance; drift free, homogeneous, cold and light effect resulting minimal eye strain for surgeon and also infrared free with a temperature of less than 1°C near light head.
- Dome design is seamless & screw less with 50 mm thickness and covered with scratch resistant glass lined with internal gaskets.
- Light along with complete camera system has a battery backup of 6 hours or more.