

ISO
9001:2008
REGISTERED



SGS



BUREAU
VERITAS



www.synmec.com

SYNMEC

5BY- 5B Seed Coating Machine

Reliable seeds coating solution for you



SYNMEC

The world top Manufacturer Adviser for Grain Cleaning Seed Processing Solutions

5BY-5B Seed Coating Machine



Parameter reference:

Model	5BY-5B
Capacity	5000 kg/hour
Qualified coating rate	≥93%
Seed damage rate	≤0.5%
Coating chemical tank	105L
Centrifugal disc motor	0.25 KW
Dosing pump motor	0.55 KW
Soft auger gear motor	0.75 KW
Optional bucket elevator	0.75 KW
Dimension (L*W*H)	2150×800×2400mm
Weight	700 kg

Application:

The 5BY-5B Seed Coating Machine is mainly used for seed processing. It has wide application in various crops seeds, such as wheat, barley, maize, sorghum, soybeans, cotton, vegetables, fruit and so on.

5BY-5B Seed Coating Machine has the optimal design, and is very famous in Chinese market. It has many advanced features such as using the high-speed centrifugal rotational disk for atomization of seed coating medicine, and using the soft auger for material mixing. It also has other advantages such as compact size, user friendly, low failure, reliable, easy to clean-up, accurate coating medicine injection, make uniform film of coating medicine, and widely usage.

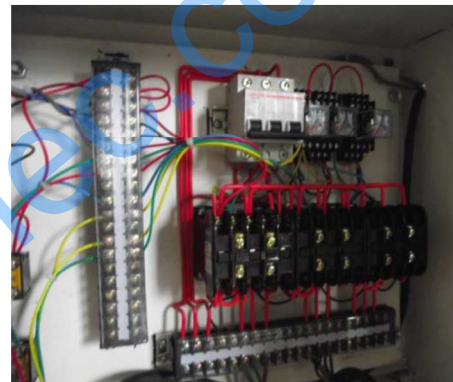
Working principle

The seeds go into the mixing cabinet through the elevator, the seeds will evenly spread around by the cone-shaped grain scattering gear, in the scattering process, the medicament will deliver to the centrifugal rotational disk (which in the mixing cabinet) by the measuring pump, under the high-speed centrifugal force, medicament will be atomized uniformly and effectively attached to the seed surface, forming an primary coated body, and then the primary coated body go into the blender, that will be mixing round and coated by soft auger, finally exit from the outlet.

Details



Chemical liquid is atomized under high speed centrifugal disk rotation and attached to seeds surface forming primary coat film.



High standard power control box
Wire lines distribution in order

The seeds and chemical liquid are fully mixed and coated in the stainless steel tank. There is soft auger inside. PVC fan and cylindrical steel tube design provide near zero seed damage rate and ensures seeds` high germination percentage.



Double material sensors for seeds amount control.
 When seeds height exceeds the upper sensor, the bucket elevator will stop feeding.
 When seeds height less than the bottom sensor, the bucket elevator will start feeding.



Centrifugal disc motor is used for chemical liquid atomization.



Soft auger gear motor for well mixing seeds and chemical



Stainless steel chemical tank with a filter
 Filter can prevent big impurity come into the tank.



Dosing pump & motor
 Pressure: 0.5Mpa
 Power: 0.55Kw



Dosing pump control chemical amount precisely



High mobility and fasten:

Professional reinforced four wheels afford high mobility.
 It is suitable for long distance transportation.
 There are locker for each wheel.

5BY-5B Seed Coating Machine photos:



Seed coating effect:



We are the best choice for you!

Factory view



Office Building

Workshops



We have professional manufacturing equipment!

Drilling and milling machine	CNC lathe	Laser cutting machine
		
Plasma cutting machine	Bending machine	Shearing machine
		

Welcome clients worldwide!



Healthy Grain, Pretty Beans, Strong Seed. SYNMEC

We serve for



Shijiazhuang SYNMEC International Trading LTD. and Hebei RUIXUE Grain Selecting Machinery Limited have all the copyright of the information and pictures provided in this leaflet. We have all the rights to do necessary adjustments on the product, and these changes may not reflect on the leaflet at the moment of production.

Address:
Head office: 15th Guangan Street,
Shijiazhuang City, Hebei Province,
China 050011
Manufacture: Huaihe Industry Park,
Hongqida Street, Shijiazhuang City,
Hebei Province, China 050000

Tel: +86 311 676663887
+86 311 89901997
Fax: +86 311 67663887
Mobile: +86 13273161281 (Tony)
Whatsapp: +86 13803340060
Imo: +86 13803340060
Wechat: 13803340060
Email: tony@synmec.com