

# DM-16RS030 DC SPUR GEAR MOTOR

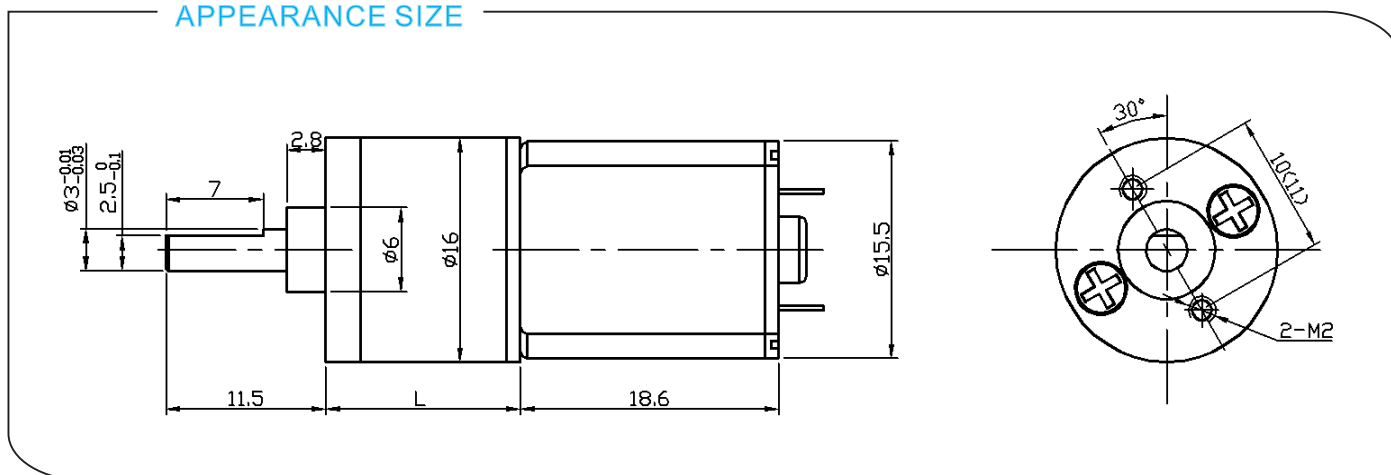
基本电压/Main Voltage : 3VDC、6VDC、12VDC

典型应用/Typical Applications :

家用电器、视听产品、办公设施、美容美发设备、医疗设备、电动玩具、电动工具、自动喷雾器、智能系统、自动控制等  
Household appliances, Audio-visual products, Office facilities, hairdressing equipment, Medical equipment, Toys, Electric tool, Automatic sprayer, Intelligent system, Automatic control and other industrial drives



## APPEARANCE SIZE



## 减速箱参数/Gearbox Data:

| 级数<br>Number of stages          | 3     | 4           | 5                     | 6                          | 7                          |
|---------------------------------|-------|-------------|-----------------------|----------------------------|----------------------------|
| 减速比<br>Reduction ratio          | 10、14 | 23、28、32、40 | 46、56、65<br>79、91、112 | 130、159、183<br>224、257、315 | 365、448、515<br>631、725、889 |
| 减速箱长度<br>Gearbox length "L" mm  | 11    | 12.5        | 14                    | 15.5                       | 17                         |
| 破坏扭矩<br>Breaking torque(kgf.cm) | 1     | 2           | 3                     | 4                          | 4                          |
| 减速箱效率<br>Gearbox efficiency     | 73%   | 65%         | 59%                   | 53%                        | 48%                        |

## 电机参数/Driving Motor Data:

| 电机型号<br>Motor model | 额定电压<br>Rated Volt. | 空载/No load    |             | 负载/Load       |             |              |                      | 堵转/Stall     |               |
|---------------------|---------------------|---------------|-------------|---------------|-------------|--------------|----------------------|--------------|---------------|
|                     |                     | 电流<br>Current | 转速<br>Speed | 电流<br>Current | 转速<br>Speed | 扭矩<br>Torque | 输出功率<br>Output power | 扭矩<br>Torque | 电流<br>Current |
|                     |                     | V             | mA          | r/min         | mA          | r/min        | g.cm                 | W            | g.cm          |
| DM-030-003-8000     | 3                   | ≤55           | 8000        | ≤250          | 6000        | 4            | 0.2                  | ≥16          | ≥500          |
| DM-030-003-10500    | 3                   | ≤80           | 10500       | ≤300          | 7200        | 5            | 0.4                  | ≥20          | ≥750          |
| DM-030-006-8000     | 6                   | ≤30           | 8000        | ≤120          | 5000        | 4            | 0.2                  | ≥16          | ≥150          |
| DM-030-006-10500    | 6                   | ≤40           | 10500       | ≤160          | 7000        | 5            | 0.4                  | ≥20          | ≥400          |

## 备注/Remark:

齿轮减速箱额定扭矩 = 电机额定扭矩 \* 减速比 \* 减速箱效率

Gear Motor Torque = Driving motor torque \* Reduction ratio \* Gearbox efficiency;

齿轮减速箱额定转速 = 电机额定转速 / 减速比

Gear Motor Speed = Driving motor speed / Reduction ratio

电机具体配置可根据客户的要求进行定制，像电压，速度，以及轴的长度和形状...

Motor detailed config can be customized according to customer's requests,

like voltage, speed, as well as shaft length and shape...

欢迎OEM或ODM项目

Welcome OEM or ODM projects