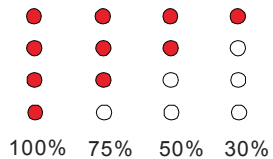




Ac244

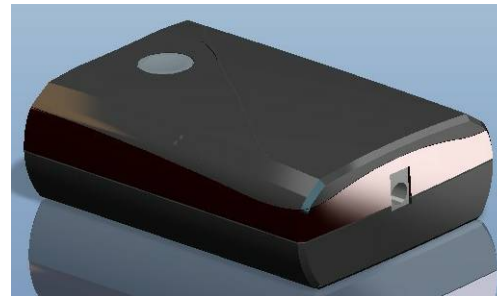
Battery Case ID: AC244(BL704L)
 Cell inside: 2pcs li ion 18650 cell
 Dimension: 23*51*71mm
 Input/Output Terminal: 3.5*1.35mm coax type,
 NDSL 2P Connector, or else in extension cable.
 Weight: 115g
 Function Code: NS, CC, PC, DM

Typical Capacity Option:
 7.4v 2200mAh/2600mAh/3200mAh/3400mAh
 3.7v 4400mAh/5200mAh/6400mAh/6800mAh



4 LED Indicating Design

*Battery Remaining Level
 *Battery PMW Output Power Rate(During Operation)
 **Light Color Option: Green, Red, Blue
 ***Battery will display the current output setting for 5 seconds
 when user changes the setting, then shortly after it will display
 the current battery remaining level.



3.5*1.35MM CONNECTOR



NDSL 2P CONNECTOR



Hidden LED Light Design

Battery will lights up when:

- *User press button for checking remaining battery level,
- *User press button 3 seconds to turn it ON,
- *Light weaks down to save power when battery in working.