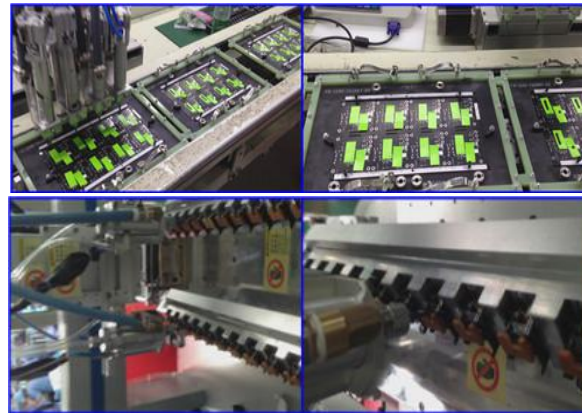


5-Axis Glue Dispensing Machine

4.. Five-Axis(4Y) Glue Dispensing Machine&Robot



FEATURES

Style: X-4Y-Z/X-4Y-2Z/X-4Y-4Z

the device Description: The device can replace the artificial dispensing operations, to achieve mechanized production; simple and convenient operation, running high-speed precision; dispensing documents can be uploaded / downloaded through the U disk to facilitate data management and preservation; There are buttons on the needle control, no external instructors, debugging more convenient than similar products; Chinese /English user interface.

Model		JT-D4400	JT-D4410
Working range(mm)	X-axis	400mm	400mm
	Y1/Y2/Y3/Y4-axis	400mm	400mm
	Z-axis	100mm	120mm
Adhesive&Glue Heating Temperature Range		0-360°C	
Max Load(kg)	Y-axis	10kg	
	Z-axis	5kg	
Moving Speed(mm/sec)		X Y Z-Axis 0.1-800mm/second	
Resolution(mm/Axis)		0.01 mm/axis	
Repetitive Positioning Accuracy		+/-0.01mm/axis	
Programme Display		Hand-held box or LCD Box (optional)	
Motor System		Servo Micro-step Motor	
Interpolation Function		3 axis(3D stereoscopic space for any route)	
Driving Method		Conveyor&Synchronous driving belt	
Direction&Axis		Three Axis: X Y Z	
Programme Way		Hand knob or computer(optional)	
I/O Signal Port		8Intuts/8 Outputs	
External Interface		USB	
Power		AC220V 50/60HZ(OPTIONAL)	
Working Condition	Temperature	10-40°C	
	Humidity	20-90% no condensation	
Dimension(mm)		635*575*600mm	635*575*600mm
Weight(kg)		60KG	100kg