

4-Axis Glue Dispensing Machine

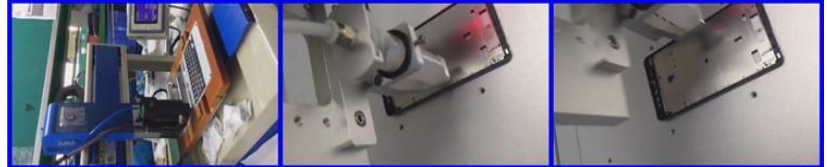
2. Four-Axis Glue Dispensing Machine&Robot



FEATURES

- The high strength equipment body makes the verticality of XYZ high, and the equipment body adopts CNC integral processing, effectively ensuring the verticality of the XYZ and improving the machining accuracy of the equipment. Single machine can be operated and installed most easily;
- No need to work with an external computer to operate on a single machine. Not only the installation is convenient, but also the operation setting is simple. The humanized instruction box allows you to easily complete the program settings;
- Collocation teaching box icon button design, let you easily set in a short moment to complete any dispensing path set. Moreover, it can easily perform various functions such as matrix replication, offset modification, timing setting and program transfer between machines.

Model: JT-D3210/JT-D3310/JT-D3410/JT-D3510/JT-D3610



Model		JT-D3400	JT-D3441	JT-D3641
Working range (mm)	X-axis	400mm	400mm	600mm
	Y1-axis	400mm	400mm	400mm
	Y2-axis	400mm	400mm	400mm
	Z-axis	100mm	120mm	120mm
Adhesive&Glue Heating Temperature Range		0-360°C		
Max Load (kg)	Y-axis	10kg		
	Z-axis	5kg		
Moving Speed(mm/sec)		X Y Z-Axis 0.1-800mm/second		
Resolution(mm/Axis)		0.01mm/axis		
Repetitive Positioning Accuracy		+/- 0.02mm/axis		
Programme Display		Hand-held box or LCD Box (optional)		
Motor System		Servo Micro-step Motor		
Interpolation Function		3 axis(3D stereoscopic space for any route)		
Driving Method		Conveyor&Synchronous driving belt		
Direction&Axis		Three Axis: X Y Z		
Programme Way		Hand knob or computer(optional)		
I/O Signal Port		8Intuts/8 Outputs		
External Interface		USB		
Power		AC220V 50/60HZ(OPTIONAL)		
Working Condition	Temperature	10-40°C		
	Humidity	20-90% no condensation		
Dimension(mm)		635*575*600mm	800*650*600mm	800*650*600mm
Weight(kg)		60KG	85kg	100kg