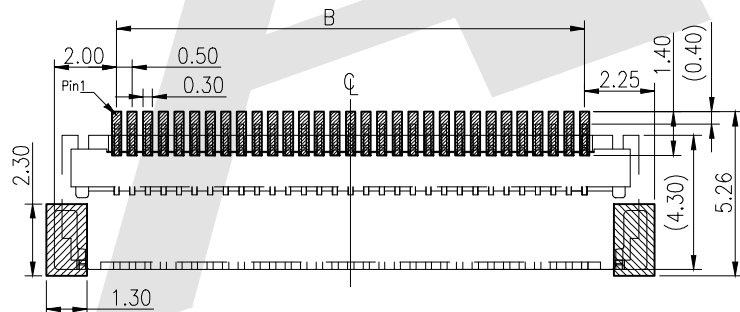
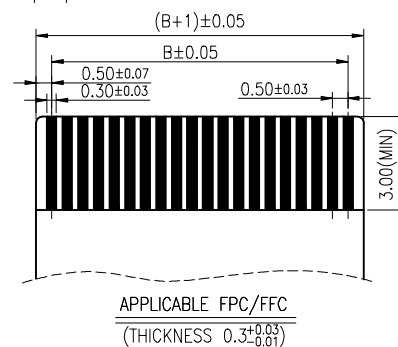
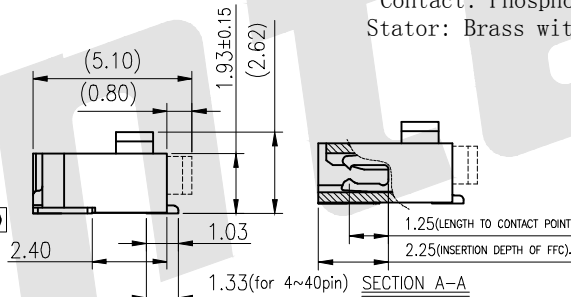
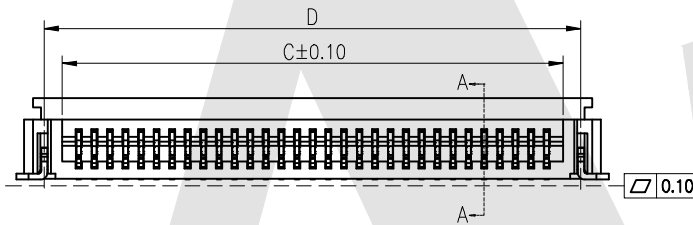


SPECIFICATIONS:
 Current rating : 0.5A 50V AC /DC
 Dielectric Withstanding Voltage : 150 V AC for one minute
 Contact Resistance : <50mΩ
 Insulation Resistance : >500MΩ
 Operating Temperature : -40°C~105°C
 Material:
 Body: High temperature plastic
 UL 94V-0 Color Nature
 Cover: High temperature plastic
 UL 94V-0 Color Black
 Contact: Phosphor Bronze
 Stator: Brass with tin plated

No. of contacts	Dimensions				No. of contacts	Dimensions			
	A	B	C	D		A	B	C	D
4	5.00	1.50	2.55	3.70	35	20.50	17.00	18.05	19.20
5	5.50	2.00	3.05	4.20	36	21.00	17.50	18.55	19.70
6	6.00	2.50	3.55	4.70	37	21.50	18.00	19.05	20.20
7	6.50	3.00	4.05	5.20	38	22.00	18.50	19.55	20.70
8	7.00	3.50	4.55	5.70	39	22.50	19.00	20.05	21.20
9	7.50	4.00	5.05	6.20	40	23.00	19.50	20.55	21.70
10	8.00	4.50	5.55	6.70	41	23.50	20.00	21.05	22.20
11	8.50	5.00	6.05	7.20	42	24.00	20.50	21.55	22.70
12	9.00	5.50	6.55	7.70	43	24.50	21.00	22.05	23.20
13	9.50	6.00	7.05	8.20	44	25.00	21.50	22.55	23.70
14	10.00	6.50	7.55	8.70	45	25.50	22.00	23.05	24.20
15	10.50	7.00	8.05	9.20	46	26.00	22.50	23.55	24.70
16	11.00	7.50	8.55	9.70	47	26.50	23.00	24.05	25.20
17	11.50	8.00	9.05	10.20	48	27.00	23.50	24.55	25.70
18	12.00	8.50	9.55	10.70	49	27.50	24.00	25.05	26.20
19	12.50	9.00	10.05	11.20	50	28.00	24.50	25.55	26.70
20	13.00	9.50	10.55	11.70	51	28.50	25.00	26.05	27.20
21	13.50	10.00	11.05	12.20	52	29.00	25.50	26.55	27.70
22	14.00	10.50	11.55	12.70	53	29.50	26.00	27.05	28.20
23	14.50	11.00	12.05	13.20	54	30.00	26.50	27.55	28.70
24	15.00	11.50	12.55	13.70	55	30.50	27.00	28.05	29.20
25	15.50	12.00	13.05	14.20	56	31.00	27.50	28.55	29.70
26	16.00	12.50	13.55	14.70	57	31.50	28.00	29.05	30.20
27	16.50	13.00	14.05	15.20	58	32.00	28.50	29.55	30.70
28	17.00	13.50	14.55	15.70	59	32.50	29.00	30.05	31.20
29	17.50	14.00	15.05	16.20	60	33.00	29.50	30.55	31.70
30	18.00	14.50	15.55	16.70	61	33.50	30.00	31.05	32.20
31	18.50	15.00	16.05	17.20	62	34.00	30.50	31.55	32.70
32	19.00	15.50	16.55	17.70	63	34.50	31.00	32.05	33.20
33	19.50	16.00	17.05	18.20	64	35.00	31.50	32.55	33.70
34	20.00	16.50	17.55	18.70	65	35.50	32.00	33.05	34.20



RECOMMENDED PCB PATTERN DIM.
 TOLERANCE : ±0.05

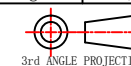
Ordering Code:

FPC0.5 - XX - RM - D - X - X - 8
 ① ② ③ ④ ⑤ ⑥ ⑦

- ① 0.5mm FPC Series
- ② Contact NO:
XX=XXpin
For example:
6=6pin
- ③ APPEARANCE
RM:SMT Right Angle
RT:DIP Right Angle
SM:SMT Straight
ST:DIP Straight
- ④ Contact type:
D: Dual Contact
- ④ Packing Type
T: Tube packing
A: tray packing
R: tape & reel
- ⑤ Plating:
G0: Gold flash
G1: 3U" gold
SN: MATT-TIN90-120U"
SO: SELECTIVE GOLD
S1: SELECTIVE GOLD 3U"
- ⑥ Series number

Unless Otherwise specified tolerance
 X. ±0.35 X.XX: ±0.20
 X.X: ±0.25 X.XXX: ±0.15

SCALE: As Shown UNIT: mm
 DRAW: Jack Bao DATE: 10/10/2018
 CHECK: BobYang DATE: 10/10/2018



Antenk ANTENK ELECTRONICS CO., LTD
 Http://www.antenk.com
 E-mail: sales@antenk.com

TITLE: 0.5mm FPC H=2.0mm, Back flip type connector

DRAWING NO: FPC0.5-XXRMDXX8

PRODUCT NO: FPC0.5-XXRMDXX8

Change FPC0.5-XXRMXX8 to FPC0.5-XXRMDXX8

23/05/2019

REV DESCRIPTION DATE

1 2 3 4 5 6 7 8