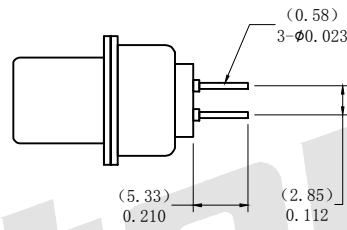
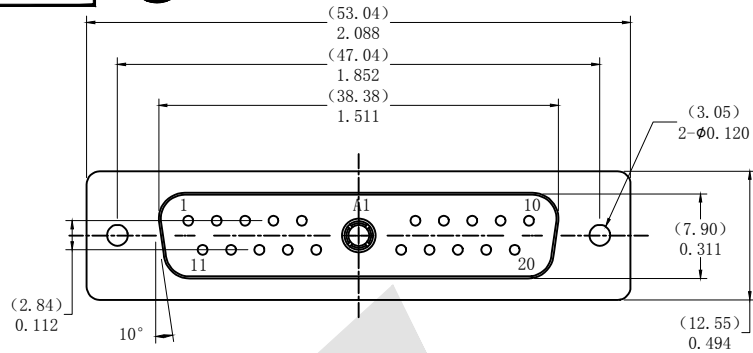


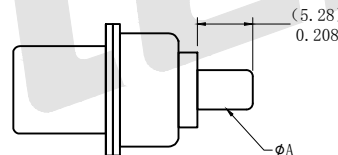
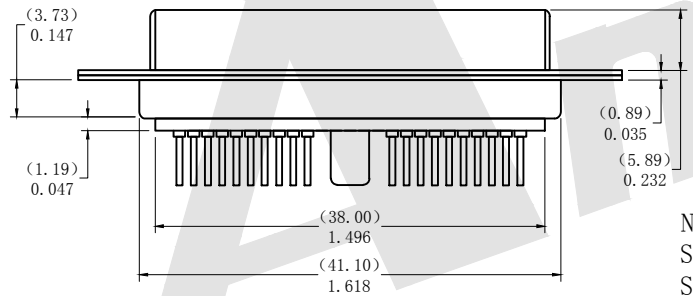
HSF



Autodesk

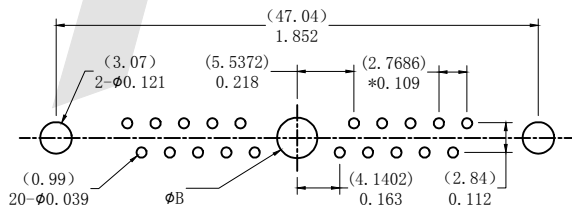


SIGNAL CONTACTS



POWER CONTACTS

NOTE:
SIGNAL AND POWER CONTACTS
SOME PRE-LOADED INTO INSULATORS



40 AMPS	Ø3.75	Ø4.0
30 AMPS	Ø3.2	Ø3.5
20 AMPS	Ø2.8	Ø3.0
10 AMPS	Ø1.7	Ø2.0
Current Rating	ØA	PCB(ØB)
	Dimension(mm)	

SPECIFICATIONS:

ELECTRICAL:
INSULATOR RESISTANCE: 5,000 MegOHMS Min.
DIELECTRIC WITHSTANDING: 1,000 VAC r.m.s.
OPERATING TEMPERATURE: -55°C ~ +125°C
CONTACT RESISTANCE: 30 MILLIOHMS Max.
POWER PINS: SEE PART No. BELOW

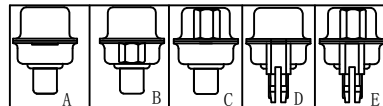
MECHANICAL:
CONTACT INSERTION FORCE: 4.5kg Max
CONTACT SEPARATOR FORCE: 0.3kg Min
MATERIALS:
CONTACTS: BRASS
INSULATOR: PBT UL94V-0 RATED,
230°C PROCESS TEMP.
SHELL: STEEL
FINISH: NICKEL

Ordering Code:

PDP21W1 -F -A -G0 -B -20
① ② ③ ④ ⑤ ⑥

- ① Series
- ② Contact Type:
M: Male F: Female
- ③ Mounting Option:
A: No accessories
B: Rear Rivet
C: Front Rivet
D: Groundstand-off on rear shell
E: Front rivet+Groundstand-off on rear shell
- ④ Contact NO. :
G0: Gold flash
G1: 3u" Gold
G2: 5u" Gold
G3: 10u" Gold
G4: 15u" Gold
G5: 30u" Gold
- ⑤ Insulation Color Code:
B: Black L: Blue
W: White
- ⑥ Power AMP:
10 = 10AMPS;
20 = 20AMPS;
30 = 30AMPS;
40 = 40AMPS;

PECOMMENDED PCB LAYOUT



Unless Otherwise specified tolerance
X. ±0.35 X.XX: ±0.20
X.X: ±0.25 X.XXX: ±0.15



ANTENK ELECTRONICS CO., LTD
Http://www.antenk.com
E-mail:sales@antenk.com

SCALE: As Shown UNIT: mm

DRAW: Lv Xun Hua DATE: 05/05/2019

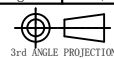
CHECK: BobYang DATE: 05/05/2019

TITLE:

POWER D-SUB 21W1 DIP STRAIGHT-FEMALE TYPE

DRAWING NO: PDP21W1-FXXXX

PRODUCT NO: PDP21W1-FXXXX



REV

DESCRIPTION

DATE

1

2

3

4

Autodesk

6

7

8

Autodesk

Autodesk