

SPECIFICATIONS:

- Voltage rating: 150V AC/DC
- Current rating: 1A AC/DC
- Withstanding Voltage: 500V AC/minute
- Insulation resistance: 500MΩ Min.
- Temperature range: -40°C To +105°C
- Contact resistance: 20mΩ Max.

Standards

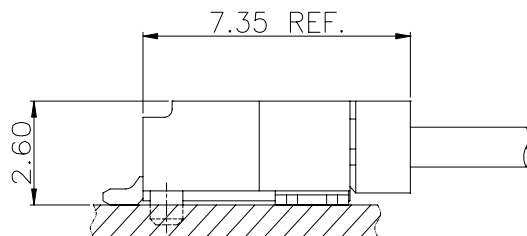
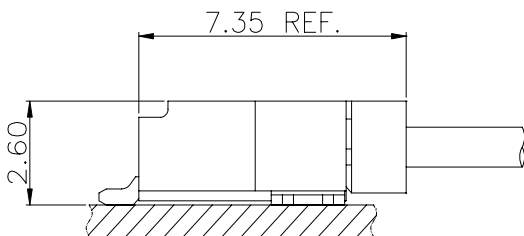
HSF



RoHS

Wire to Board

Assembly Layout



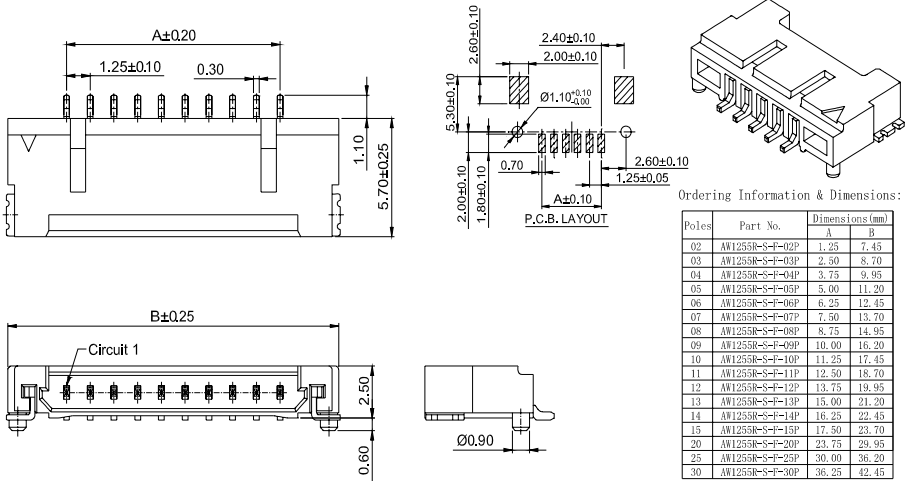
SMT TYPE

Connectors Expert Around You

1.25mm Pitch 90° wafer-smt with boss connector

WAFER

- Part NO:AW1255R-S-F-xP
- Material:Pin:Brass/Tin over Nickel
- Solder Tabs: Brass/Tin over Nickel
- Insulator:Nylon 9T, UL94V-0
- Mates with:AH1255 series Housing
- Color: Ivory

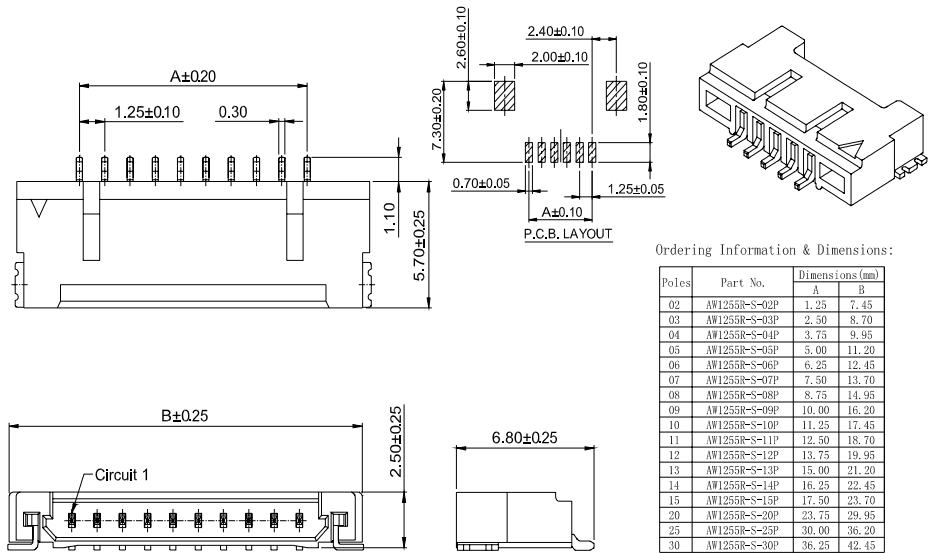


Wire to Board

1.25mm Pitch 90° wafer-smt without boss connector

WAFER

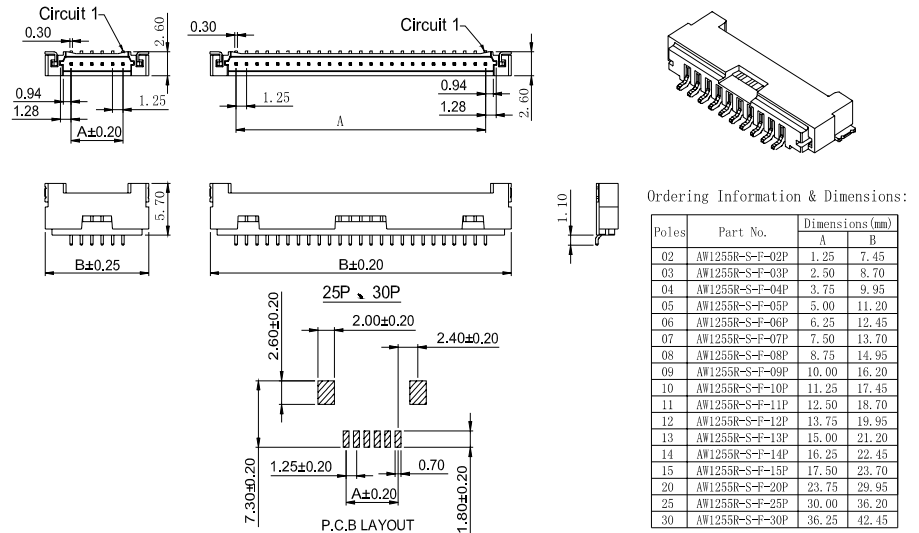
- Part NO:AW1255R-S-xP
- Material:Pin:Brass/Tin over Nickel
- Solder Tabs: Brass/Tin over Nickel
- Insulator:Nylon 9T, UL94V-0
- Mates with:AH1255 series Housing
- Color: Ivory



1.25mm Pitch 90° wafer-smt without boss connector

WAFER

- Part NO:AW1255RA-S-xP
- Material:Pin:Brass/Tin over Nickel
- Solder Tabs: Brass/Tin over Nickel
- Insulator:Nylon 6T, UL94V-0
- Mates with:AH1255A series Housing
- Color: Beige

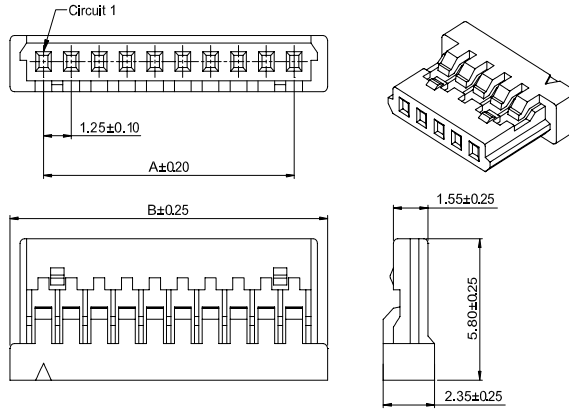


Connectors Expert Around You

1.25mm Pitch housing connector

HOUSING

- Part NO.:AH1255-xP
- Suitable:AT1255T series Terminal
- Mates with:AW1255 series Wafer
- Material:Nylon 66,UL94V-0
- Color:Gray



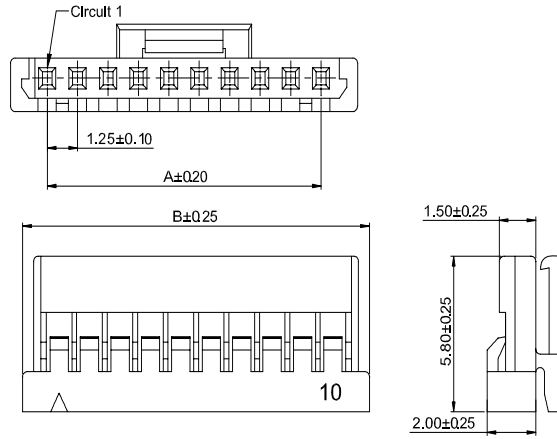
Ordering Information & Dimensions:

Poles	Part No.	Dimensions(mm)	
		A	B
02	AH1255-02P	1.25	4.35
03	AH1255-03P	2.50	5.60
04	AH1255-04P	3.75	6.85
05	AH1255-05P	5.00	8.10
06	AH1255-06P	6.25	9.35
07	AH1255-07P	7.50	10.60
08	AH1255-08P	8.75	11.85
09	AH1255-09P	10.00	13.10
10	AH1255-10P	11.25	14.35
11	AH1255-11P	12.50	15.60
12	AH1255-12P	13.75	16.85
13	AH1255-13P	15.00	18.10
14	AH1255-14P	16.25	19.35
15	AH1255-15P	17.50	20.60
20	AH1255-20P	23.75	26.85
25	AH1255-25P	30.00	33.10
30	AH1255-30P	36.25	39.35

1.25mm Pitch housing connector

HOUSING

- Part NO.:AH1255A-xP
- Suitable:AT1255T-A series Terminal
- Mates with:AW1255 series Wafer
- Material:Nylon 66,UL94V-0
- Color:White



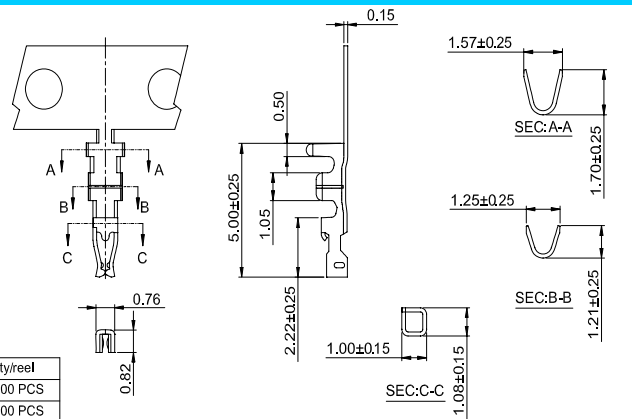
Ordering Information & Dimensions:

Poles	Part No.	Dimensions(mm)	
		A	B
02	AH1255A-02P	1.25	4.35
03	AH1255A-03P	2.50	5.60
04	AH1255A-04P	3.75	6.85
05	AH1255A-05P	5.00	8.10
06	AH1255A-06P	6.25	9.35
07	AH1255A-07P	7.50	10.60
08	AH1255A-08P	8.75	11.85
09	AH1255A-09P	10.00	13.10
10	AH1255A-10P	11.25	14.35
11	AH1255A-11P	12.50	15.60
12	AH1255A-12P	13.75	16.85
13	AH1255A-13P	15.00	18.10
14	AH1255A-14P	16.25	19.35
15	AH1255A-15P	17.50	20.60
20	AH1255A-20P	23.75	26.85
25	AH1255A-25P	30.00	33.10
30	AH1255A-30P	36.25	39.35

1.25mm Pitch crimp terminal connector

TERMINAL

- Part NO:AT1255T-xP
- Applicable wire:AWG#26-#32
- Material:Phosphor Bronze
- Finish:Tin Plated or Gold
- Used in AH1255 series Housing



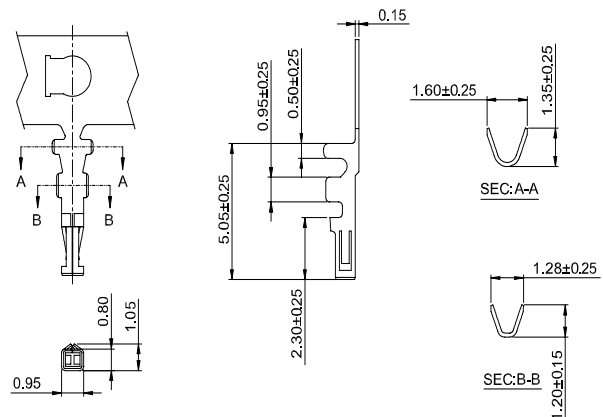
Ordering information & Specifications

Part NO.	Wire Range	Insulation O.D.	Material	Finish	Qty/reel
AT1255T-TP	AWG#26-#32	1.00mm(max)	Phosphor Bronze	Tin over Nickel	10,000 PCS
AT1255T-GP	AWG#26-#32	1.00mm(max)	Phosphor Bronze	Gold over Nickel	10,000 PCS

1.25mm Pitch crimp terminal connector

TERMINAL

- Part NO:AT1255T-A-xP
- Applicable wire:AWG#28-#32
- Material:Phosphor Bronze
- Finish:Tin Plated or Gold
- Used in AH1255A series Housing



Ordering information & Specifications

Part NO.	Wire Range	Insulation O.D.	Material	Finish	Qty/reel
AT1255T-TP-A	AWG#28-#32	0.90mm(max)	Phosphor Bronze	Tin over Nickel	15,000 PCS
AT1255T-GP-A	AWG#28-#32	0.90mm(max)	Phosphor Bronze	Gold over Nickel	15,000 PCS