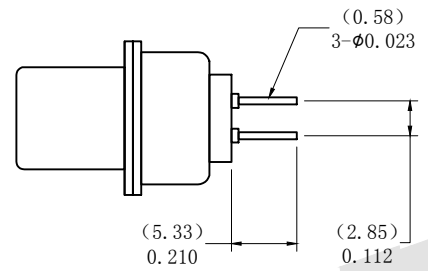
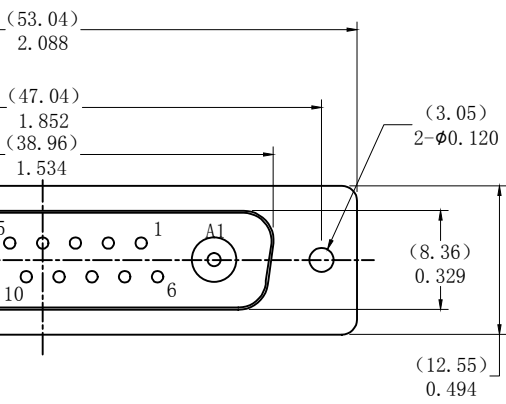
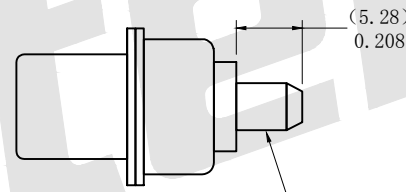


HSF



SIGNAL CONTACTS



POWER CONTACTS

**SPECIFICATIONS:**

**ELECTRICAL:**  
 INSULATOR RESISTANCE: 5,000 MegOHMS Min.  
 DIELECTRIC WITHSTANDING: 1,000 VAC r. m. s.  
 OPERATING TEMPERATURE: -55°C~+125°C  
 CONTACT RESISTANCE: 30 MILLIOHMS Max.  
 POWER PINS: SEE PART No. BELOW

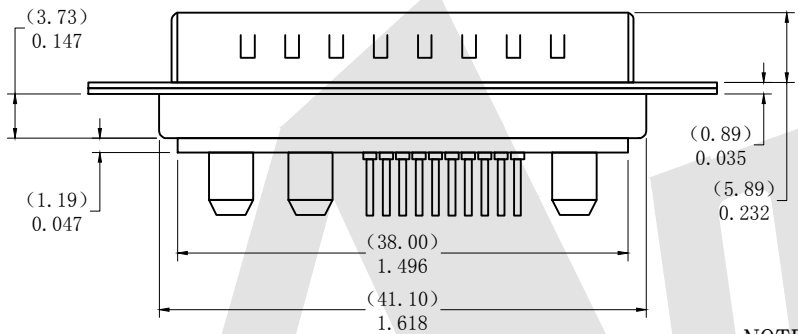
**MECHANICAL:**  
 CONTACT INSERTION FORCE: 4.5kg Max  
 CONTACT SEPARATOR FORCE: 0.3kg Min

**MATERIALS:**  
 CONTACTS: BRASS  
 INSULATOR: PBT UL94V-0 RATED, 230°C PROCESS TEMP.  
 SHELL: STEEL  
 FINISH: NICKEL

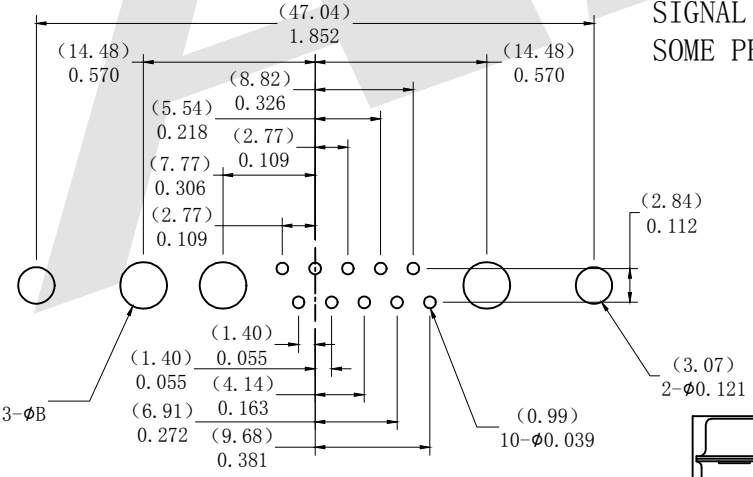
Ordering Code:

PDP13W3 -M -A -G0 -B -20  
 ① ② ③ ④ ⑤ ⑥

- ① Series
- ② Contact Type: M:Male F:Female
- ③ Mounting Option: A: No accessories B: Rear Rivet C: Front Rivet D: Groundstand-off on rear shell E: Front rivet+Groundstand-off on rear shell
- ④ Contact NO. : G0: Gold flash G1: 3u" Gold G2: 5u" Gold G3: 10u" Gold G4: 15u" Gold G5: 30u" Gold
- ⑤ Insulation Color Code: B:Black L:Blue W:White
- ⑥ Power AMP: 10 = 10AMPS; 20 = 20AMPS; 30 = 30AMPS; 40 = 40AMPS;

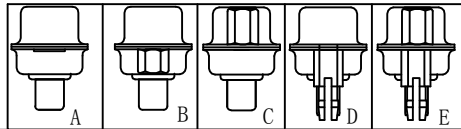


**NOTE:**  
 SIGNAL AND POWER CONTACTS  
 SOME PRE-LOADED INTO INSULATORS



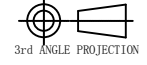
PECOMMENDED PCB LAYOUT

40 AMPS	φ3.75	φ4.0
30 AMPS	φ3.2	φ3.5
20 AMPS	φ2.8	φ3.0
10 AMPS	φ1.7	φ2.0
Current Rating	φA	PCB(φB)
	Dimension(mm)	



Unless Otherwise specified tolerance  
 X. ±0.35 X.XX: ±0.20  
 X.X: ±0.25 X.XXX: ±0.15

SCALE: As Shown UNIT: mm  
 DRAW: Lv Xun Hua DATE: 05/05/2019  
 CHECK: BobYang DATE: 05/05/2019



**Antenk** ANTENK ELECTRONICS CO., LTD  
 Http://www.antenk.com  
 E-mail:sales@antenk.com

TITLE: POWER D-SUB 13W3 DIP STRAIGHT-MALE TYPE  
 DRAWING NO: PDP13W3-MXXXX  
 PRODUCT NO: PDP13W3-MXXXX

REV	DESCRIPTION	DATE

Autodesk

Autodesk