

SPECIFICATIONS:

- Voltage rating: 200V AC/DC
- Current rating: 1A AC/DC
- Withstanding Voltage: 500V AC/minute
- Insulation resistance: 100MΩ Min.
- Temperature range: -40°C To +105°C
- Contact resistance: 40mΩ Max.

Standards

HSF

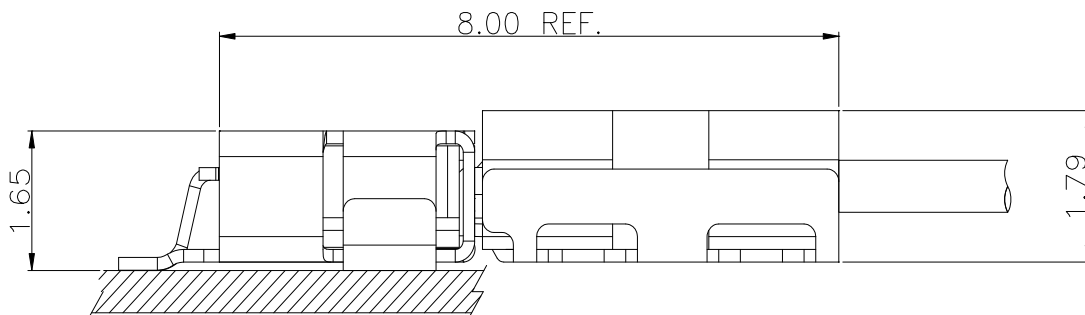


RoHS

Wire to Board

Assembly Layout

Right Angle Type

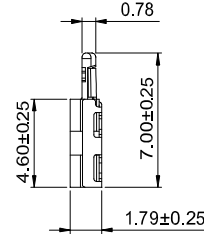
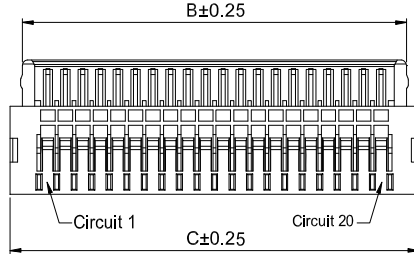
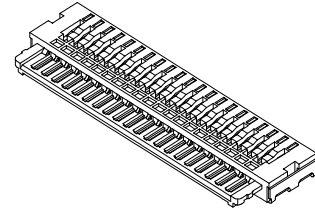
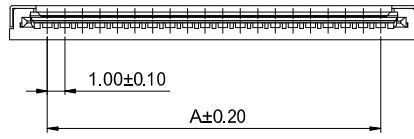


Connectors Expert Around You

1.00mm Pitch housing connector

HOUSING

- Part NO.:AH1001-xP
- Suitable:AT1001T-xP series Terminal
- Mates with:AW1001R-S-xP series Wafer
- Material:insulator:Nylon 46,UL94V-0
- Shell:Phosphor Bronze/Tin over Nickel
- Color:Ivory



Ordering Information & Dimensions:

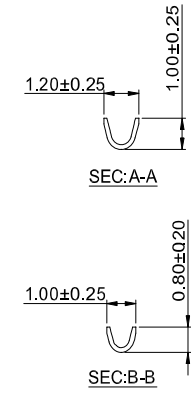
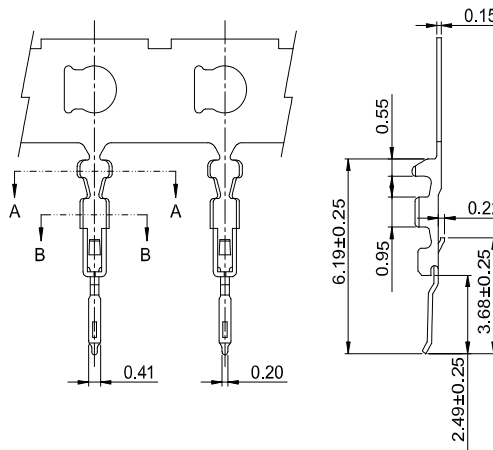
Part No.	Dimensions (mm)		
	A	B	C
AH1001-20P	19.00	21.88	23.28
AH1001-30P	29.00	31.88	33.28

Wire to Board

1.00mm Pitch Crimp terminal connector

TERMINAL

- Part NO:AT1001T-xP
- Applicable wire:AWG#28-#36
- Material:Phosphor Bronze
- Finish:Gold over Nickel
- Used in AH1001-xP series Housing



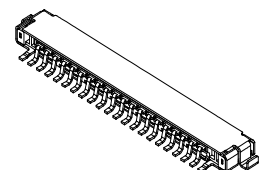
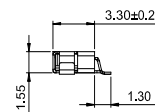
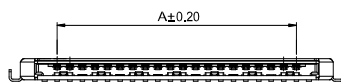
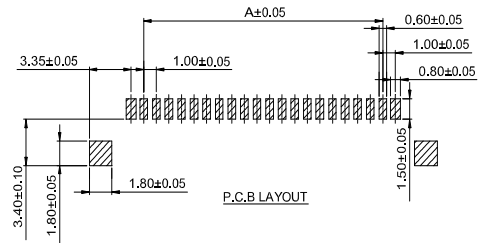
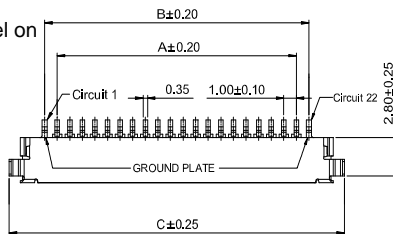
Ordering information & Specifications

Part NO.	Wire Range	Insulation O.D.	Material	Finish	Qty/reel
AT1001T-GP	AWG#28-#36	0.50mm(max)	Phosphor Bronze	Gold over Nickel	15,000 PCS

1.00mm Pitch 90° Wafer-SMT connector

WAFER

- Part NO:AW1001R-S-xP
- Material:Pin:Phosphor Bronze/Tin over Nickel on solder area
- Gold over Nickel on contact area
- Shell:Phosphor Bronze/Tin over Nickel
- Insulator:Nylon 6T, UL94V-0
- Mates with:AH1001-xP series Housing
- Color:Ivory



Ordering Information & Dimensions:

Part No.	Dimensions (mm)		
	A	B	C
AW1001R-S-20P	19.00	21.88	26.65
AW1001R-S-30P	29.00	31.88	36.65