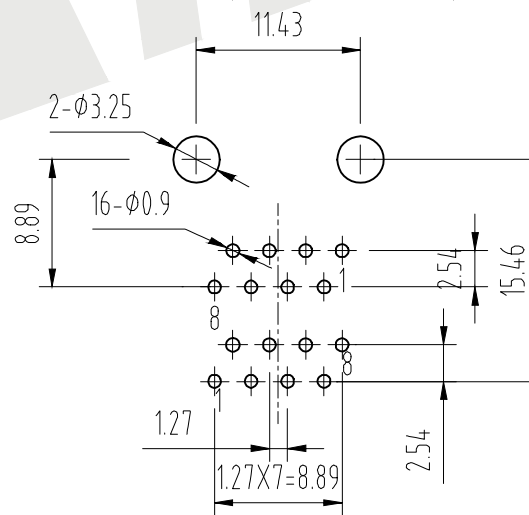
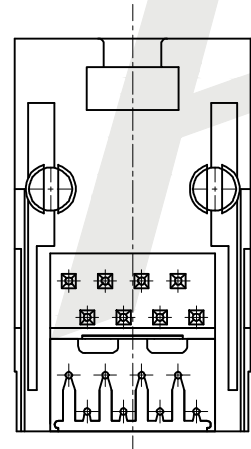
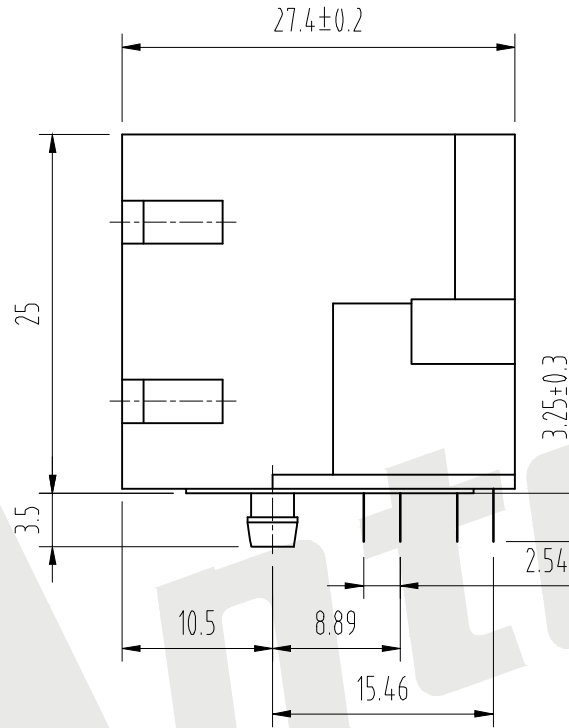
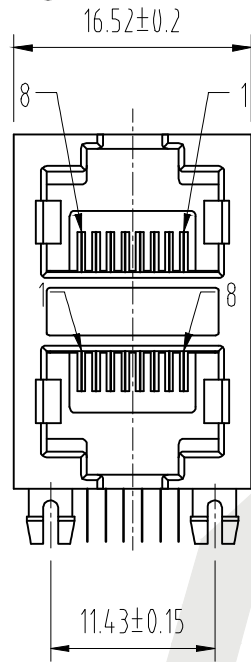


HSF

RoHS



NOTES:

MATERIAL:

1. HOUSING MATERIAL: GLASS FILLED POYESTER UL94V-0.
2. CONTACT MATERIAL: PHOSPHOR BRONZE  $t=0.3\text{mm}$
3. PLATING: SELECTING GOLD PLATING  $1\mu\sim 50\mu$  OVER NICKEL IN CONTACT AREA.  $150\mu$  TIN PLATIN. OVER NICKEL IN SOLDER AREA
4. SHIELD: 0.2mm THICKNESS COPPER WITH NICKEL PLATE

ELECTRICAL

1. VOLTAGE RATING: 125V AC RMS
2. CURRENT RATING: 1.5AMP
3. CONTACT RESISTANCE: 30 MILLIOHMS MAX
4. INSULATION RESISTANCE 500 MEGOHMS MIN @500V DC
5. DIELECTRIC WITHSTANDING RESISTANCE : 1000V AC RMS 50Hz. 1MIN

MECHANICAL

1. DURRABILITY: 750 CYCLES MIN
2. PCB RETENTTON PRB-SOLDER: 1 LB MIN

ENVIRONMENTAL

1. STORAGE:  $-40^{\circ}\text{C}$  TO  $85^{\circ}\text{C}$
2. OPERATION:  $0^{\circ}\text{C}$  TO  $70^{\circ}\text{C}$

Order code:

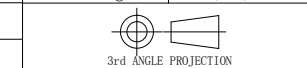
ATRJ5921 - 8P - 8C - X - A - G

①      ②      ③      ④      ⑤      ⑥

- |   |                    |
|---|--------------------|
| ① SERIES NO:                            | ⑤ Shield           |
| ② NUMBER OF POSITIONS (10P, 8P, 6P, 4P) | A: W/O Shield      |
| ③ NUMBER OF CONTACTS (10C, 8C, 6C, 4C)  | B: Half Shield     |
| ④ Contact Plating                       | C: Shield W/Eml    |
| G0: Gold flash                          | D: Shield W/O Eml  |
| G1: 3U" Gold                            | ⑥ Ports            |
| G2: 5U" Gold                            | A: 1X1P    G: 2*1P |
| G3: 10U" Gold                           | B: 1X2P    H: 2*2P |
| G4: 15U" Gold                           | C: 1X4P    I: 2*3P |
| G5: 30U" Gold                           | D: 1X5P    J: 2*4P |
| SN: Tin                                 | E: 1X6P    K: 2*6P |
|   | F: 1X8P    L: 2*8P |

Unless Otherwise specified tolerance  
 X. ±0.35    X.XX: ±0.20  
 X.X: ±0.25    X.XXX: ±0.15

SCALE: As Shown	UNIT: mm
DRAW Wu Feng Rong	DATE 22/03/2018
CHECK BobYang	DATE 22/03/2018



**Antenk**® ANTENK ELECTRONICS CO., LTD  
[Http://www.antenk.com](http://www.antenk.com)  
 E-mail: sales@antenk.com

TITLE:  
RJ45 Jack side entry, Full plastic 2X1P

DRAWING NO: ATRJ5921-8P8C-X-A-G

PRODUCT NO: ATRJ5921-8P8C-X-A-G

REV	DESCRIPTION	DATE
1		
2		
3		
4		
5		