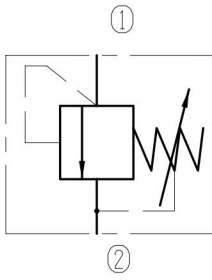


直动式溢流阀 (钢球型) Directly Operated Relief Valves (Ball-type)

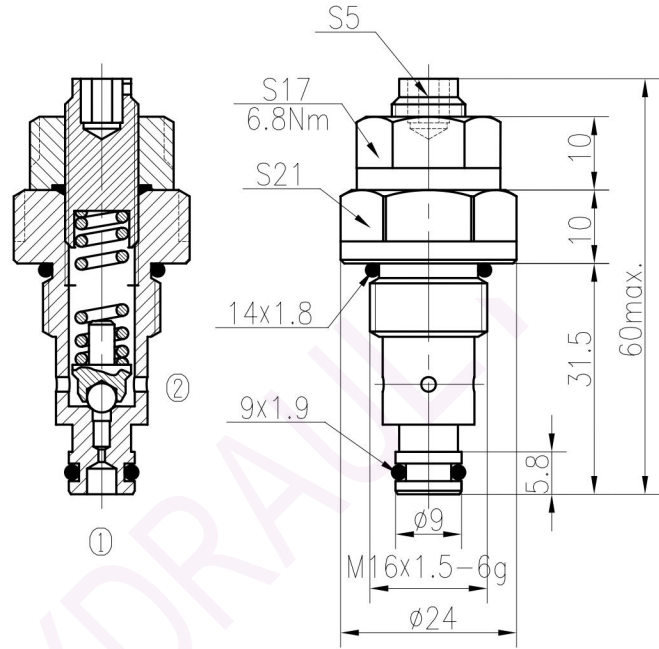


YF04-01/X.Y



技术参数 Specifications:

最高工作压力(Max working Pressure):	320bar
可通过最大流量(Flow Max):	2.5L/min
内泄漏量(Internal Leakage):	<30ml/min (70~80% of Setting Pressure at 2L/min)
过滤精度(Filtration Of Oil):	25µm or better
使用温度(Temperature):	-30~+100℃(丁腈橡胶) (Standard Buna Seals)
插孔(Cavity):	T-2101(See Page 7.1.6)
安装扭矩(Installation torque):	13.6~16.3Nm

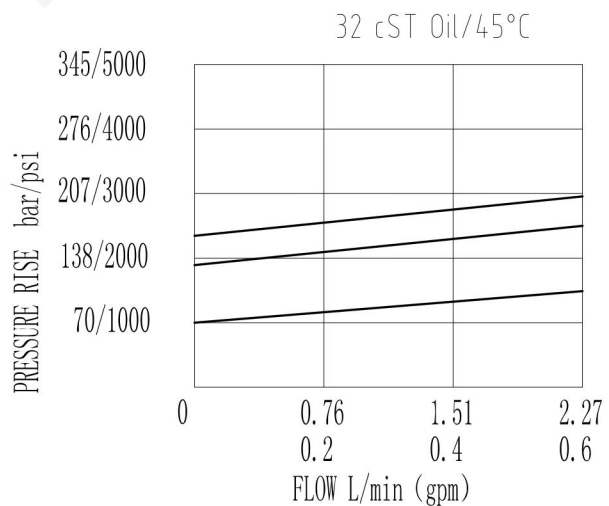


当①口压力未达到弹簧设定压力的80%时, ①到②不通, 超过80%并继续升高时, ①到②开始溢流, 至到弹簧的最高设定压力。

The valve blocks flow from ① to ② until 80% pressure is present at ①. With the continued increase pressure on ①, ① to ② began to overflow, until to the spring's maximum pressure.

注意: 此阀型在调压过程中, 调压螺杆会有油液渗出, 但锁紧后无渗漏。

Note: There will be leakage at the adjustment screw in the process of regulating pressure, but without leakage after locking.



X 调压方式 (ADJUSTMENTS)

03 内六角、防松螺母
Looseproof hex.
and Socket Screw



弹簧规格 (SPRINGS)

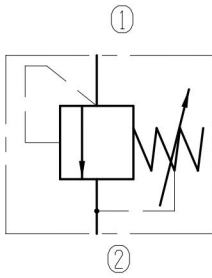
Y	调压范围 Press. range bar	每转压力增量 Press. increase bar/turn	标准设定压力 Standard setting bar	开启压力 Cracking press. bar
10	5~120	35	100	70
15	100~220	49	160	120
20	160~320	83	200	160

直动式溢流阀 (锥阀型)

Directly Operated Relief Valves (Poppet-type)

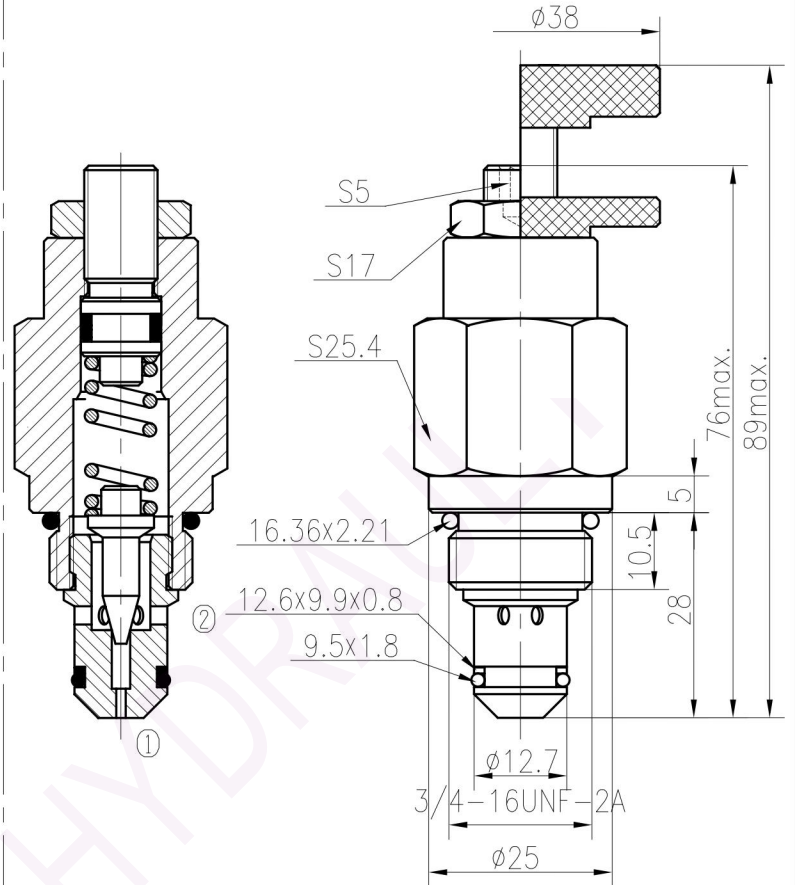


YF04-06/X.Y



技术参数 Specifications:

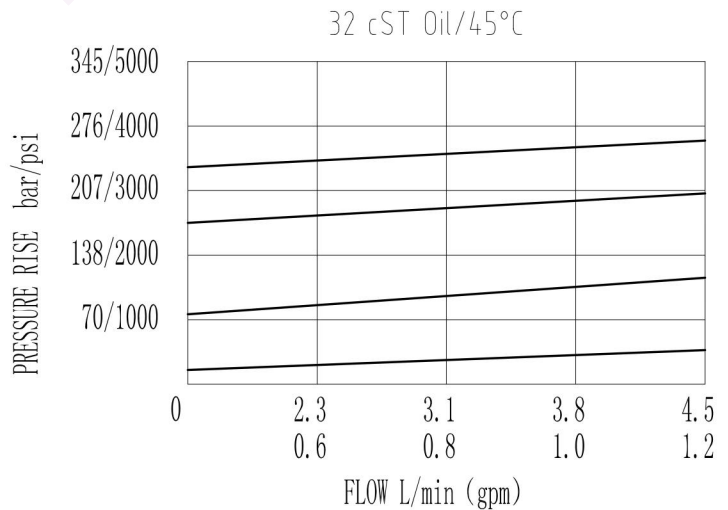
最高工作压力(Max working Pressure):	350bar
可通过最大流量(Flow Max):	4.5L/min
内泄漏量(Internal Leakage):	<30ml/min (75~85% of Setting Pressure at 2L/min)
过滤精度(Filtration Of Oil):	25μm or better
使用温度(Temperature):	-30~+100℃(丁腈橡胶) (Standard Buna Seals)
插孔(Cavity):	T4-1(See Page 7.1.1)
安装扭矩(Installation torque):	24.5~27.2Nm



当①口压力未达到弹簧设定压力的85%时, ①到②不通, 超过85%并继续升高时, ①到②开始溢流, 至到弹簧的最高设定压力。

The valve blocks flow from ① to ② until 85% pressure is present at ①. With the continued increase pressure on ①, ① to ② began to overflow, until to the spring's maximum pressure.

注意: 1、此处的为85%大概值, 由于加工制造误差及实际使用流量的不同, 此数值会有变动。低的压力范围使用时, 此数值可能低至70%; 2、请在调压范围内使用, 谨防损坏弹簧。



X 调压方式 (ADJUSTMENTS)

03	内六角、防泄漏螺母 Leakproof hex. and Socket Screw	
05	铝制手轮及锁紧螺母 Alum. Knob and Locking Nut	

弹簧规格 (SPRINGS)

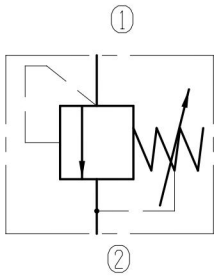
Y	调压范围 Press. range bar	每转压力增量 Press. increase bar/turn	标准设定压力 Standard setting bar	开启压力 Cracking press. bar
05	12~47	7.3	35	25
10	34~93	18	80	57
15	72~238	36	200	170
20	210~350	71	250	220

直动式溢流阀 (锥阀型)

Directly Operated Relief Valves (Poppet-type)

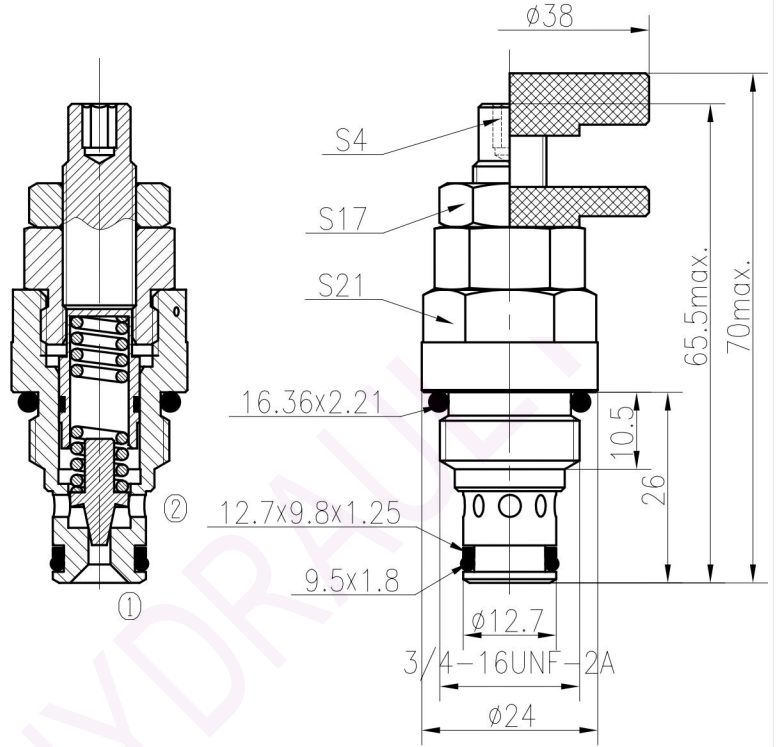


YF06-00/X.Y



技术参数 Specifications:

最高工作压力(Max working Pressure):	350bar
可通过最大流量(Flow Max):	11L/min
内泄漏量(Internal Leakage):	<30ml/min (75~85% of Setting Pressure at 8L/min)
过滤精度(Filtration Of Oil):	25μm or better
使用温度(Temperature):	-30~+100℃(丁腈橡胶) (Standard Buna Seals)
插孔(Cavity):	T4-1(See Page 7.1.1)
安装扭矩(Installation torque):	24.5~27.2Nm

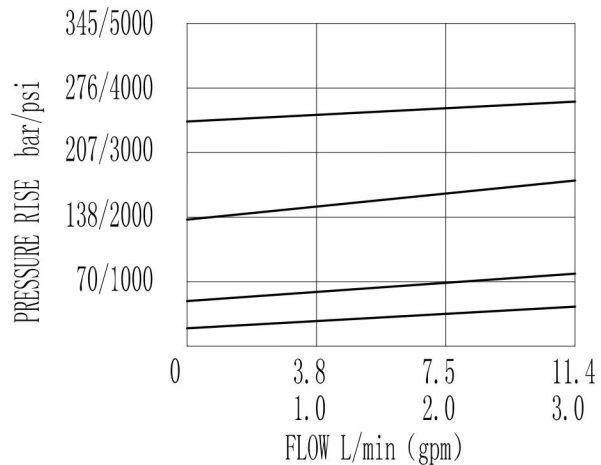


当①口压力未达到弹簧设定压力的85%时, ①到②不通, 超过85%并继续升高时, ①到②开始溢流, 至到弹簧的最高设定压力。

The valve blocks flow from ① to ② until 85% pressure is present at ①. With the continued increase pressure on ①, ① to ② began to overflow, until to the spring's maximum pressure.

注意: 1、此处的为85%大概值, 由于加工制造误差及实际使用流量的不同, 此数值会有变动。低的压力范围使用时, 此数值可能低至70%; 2、请在调压范围内使用, 谨防损坏弹簧。

32 cST Oil/45°C



X 调压方式 (ADJUSTMENTS)

03	内六角、防泄漏螺母 Leakproof hex. and Socket Screw	
05	铝制手轮及锁紧螺母 Alum. Knob and Locking Nut	

弹簧规格 (SPRINGS)

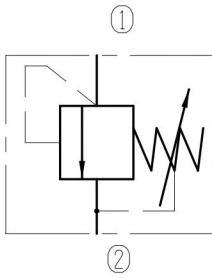
Y	调压范围 Press. range bar	每转压力增量 Press. increase bar/turn	标准设定压力 Standard setting bar	开启压力 Cracking press. bar
05	8~38	6.6	35	25
10	21~88	18	80	57
15	128~248	47	160	135
20	210~345	79	250	220

直动式溢流阀 (锥阀型)

Directly Operated Relief Valves (Poppet-type)

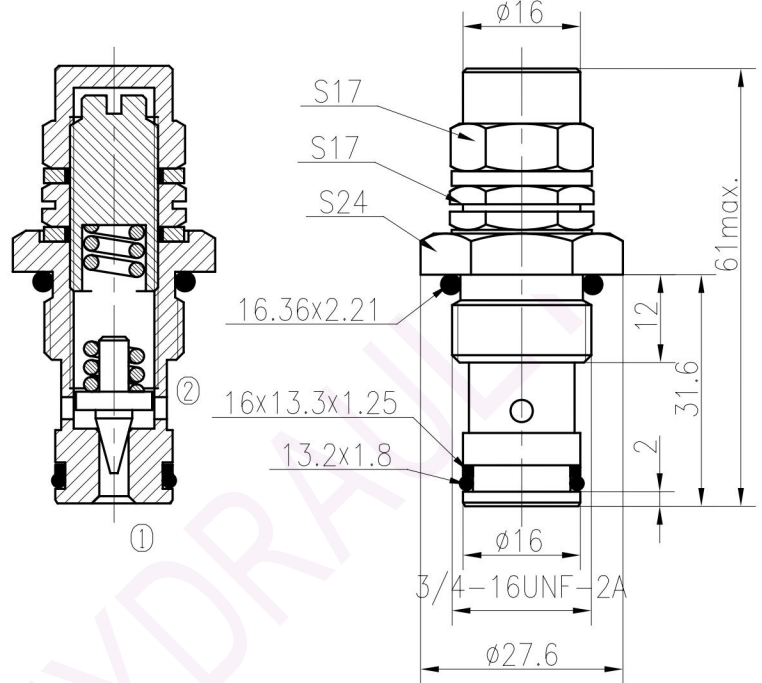


YF06-02/X.Y



技术参数 Specifications:

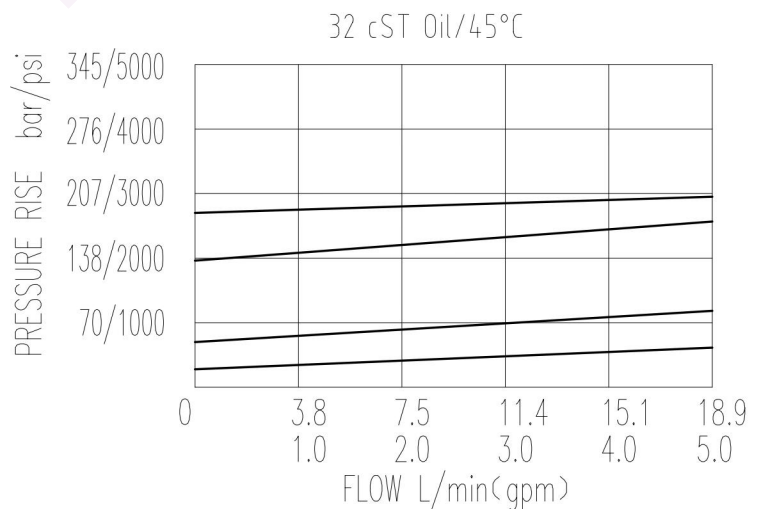
最高工作压力(Max working Pressure):	210bar
可通过最大流量(Flow Max):	18L/min
内泄漏量(Internal Leakage):	<30ml/min (75~85% of Setting Pressure at 8L/min)
过滤精度(Filtration Of Oil):	25μm or better
使用温度(Temperature):	-30~+100℃(丁腈橡胶) (Standard Buna Seals)
插孔(Cavity):	T-2106(See Page 7.1.7)
安装扭矩(Installation torque):	24.5~27.2Nm



当①口压力未达到弹簧设定压力的85%时, ①到②不通, 超过85%并继续升高时, ①到②开始溢流, 至到弹簧的最高设定压力。

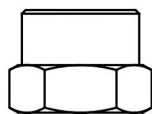
The valve blocks flow from ① to ② until 85% pressure is present at ①. With the continued increase pressure on ①, ① to ② began to overflow, until to the spring's maximum pressure.

注意: 1、此处的为85%大概值, 由于加工制造误差及实际使用流量的不同, 此数值会有变动。低的压力范围使用时, 此数值可能低至70%; 2、请在调压范围内使用, 谨防损坏弹簧。3、调压过程中, 螺钉处会有油液渗出, 但锁紧后无渗漏。



调压方式 (ADJUSTMENTS)

03 预先设定、隐藏式
Factory Preset and Hidden Adjustments



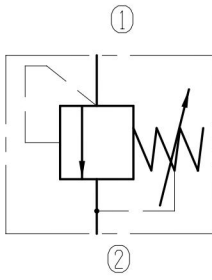
Y	弹簧规格 (SPRINGS)			
	调压范围 Press. range bar	每转压力增量 Press. increase bar/turn	标准设定压力 Standard setting bar	开启压力 Cracking press. bar
05	7~47	10	35	25
10	39~98	19	80	58
15	73~171	37	160	130
20	123~210	62	200	170

直动式溢流阀 (锥阀型)

Directly Operated Relief Valves (Poppet-type)

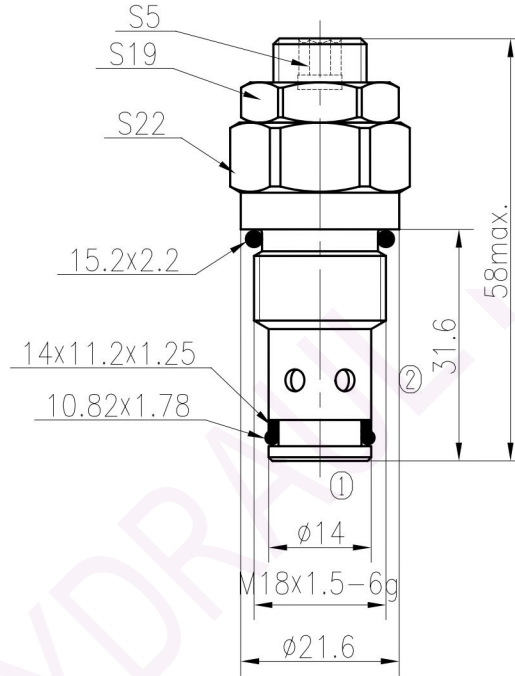


YF06-02E/X.Y



技术参数 Specifications:

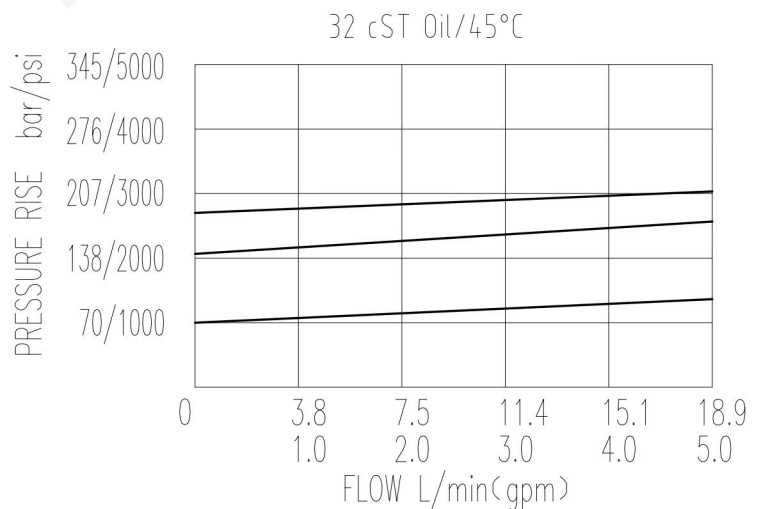
最高工作压力(Max working Pressure):	210bar
可通过最大流量(Flow Max):	18L/min
内泄漏量(Internal Leakage):	<30ml/min
(75~85% of Setting Pressure at 8L/min)	
过滤精度(Filtration Of Oil):	25μm or better
使用温度(Temperature):	-30~+100℃(丁腈橡胶)
(Standard Buna Seals)	
插孔(Cavity):	T-2117(See Page 7.1.25)
安装扭矩(Installation torque):	24.5~27.2Nm



当①口压力未达到弹簧设定压力的85%时, ①到②不通, 超过85%并继续升高时, ①到②开始溢流, 至到弹簧的最高设定压力。

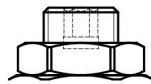
The valve blocks flow from ① to ② until 85% pressure is present at ①. With the continued increase pressure on ①, ① to ② began to overflow, until to the spring's maximum pressure.

注意: 1、此处的为85%大概值, 由于加工制造误差及实际使用流量的不同, 此数值会有变动。低的压力范围使用时, 此数值可能低至70%; 2、请在调压范围内使用, 谨防损坏弹簧。3、调压过程中, 螺钉处会有油液渗出, 但锁紧后无渗漏。



调压方式 (ADJUSTMENTS)

03 内六角、防泄漏螺母
Leakproof hex.
and socket screw



弹簧规格 (SPRINGS)

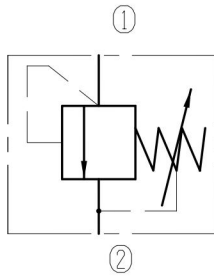
Y	弹簧规格 (SPRINGS)			
	调压范围 Press. range bar	每转压力增量 Press. increase bar/turn	标准设定压力 Standard setting bar	开启压力 Cracking press. bar
05	10~100	25	90	70
10	80~160	47	160	140
15	120~210	78	200	180

直动式溢流阀 (锥阀型)

Directly Operated Relief Valves (Poppet-type)

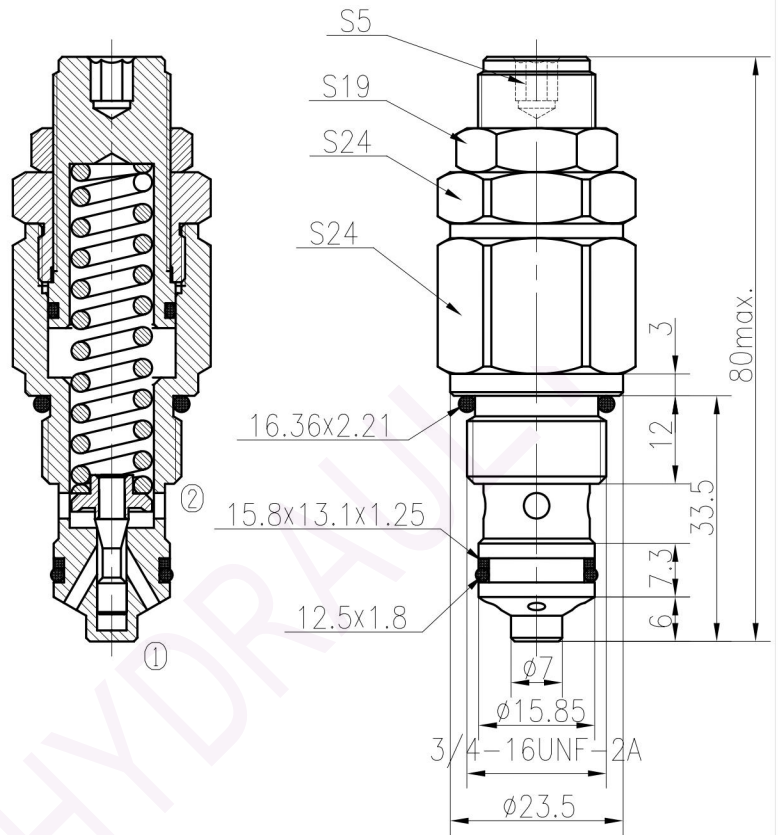


YF06-09/X.Y



技术参数 Specifications:

最高工作压力(Max working Pressure):	350bar
可通过最大流量(Flow Max):	30L/min
内泄漏量(Internal Leakage):	<30ml/min (75~85% of Setting Pressure at 15L/min)
过滤精度(Filtration Of Oil):	25μm or better
使用温度(Temperature):	-30~+100℃(丁腈橡胶) (Standard Buna Seals)
插孔(Cavity):	T4-S1(See Page 7.1.4)
安装扭矩(Installation torque):	24.5~27.2Nm

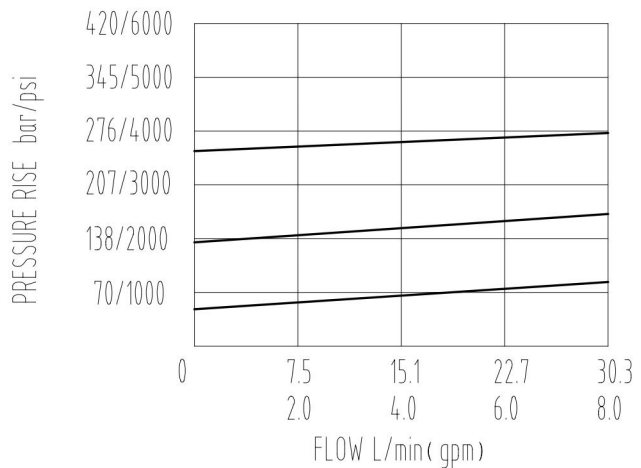


当①口压力未达到弹簧设定压力的85%时, ①到②不通, 超过85%并继续升高时, ①到②开始溢流, 至到弹簧的最高设定压力。

The valve blocks flow from ① to ② until 85% pressure is present at ①. With the continued increase pressure on ①, ① to ② began to overflow, until to the spring's maximum pressure.

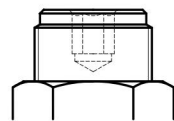
注意: 1、此处的为85%大概值, 由于加工制造误差及实际使用流量的不同, 此数值会有变动。低的压力范围使用时, 此数值可能低至70%; 2、请在调压范围内使用。

32 cST Oil/45°C



调压方式 (ADJUSTMENTS)

03 内六角, 防泄漏螺母
Leakproof hex.
and Socket Screw



弹簧规格 (SPRINGS)

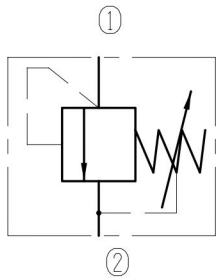
Y	弹簧规格 (SPRINGS)			
	调压范围 Press. range bar	每转压力增量 Press. increase bar/turn	标准设定压力 Standard setting bar	开启压力 Cracking press. bar
05	30~90	15	80	60
10	80~140	28	100	80
15	140~220	47	210	185
20	200~350	73	250	225

直动式溢流阀 (锥阀型)

Directly Operated Relief Valves (Poppet-type)

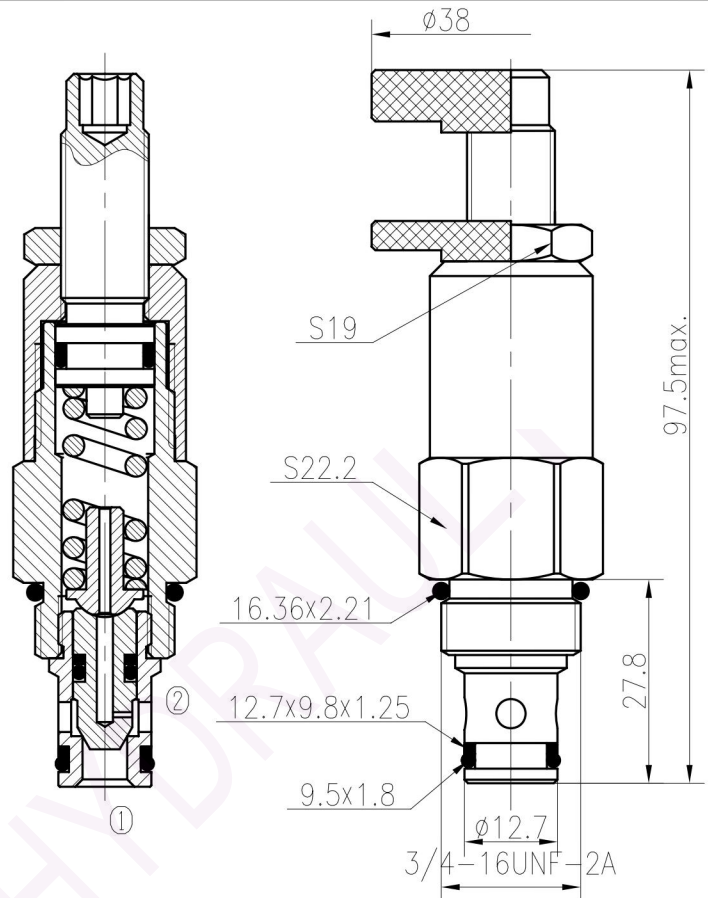


YF08-00/X.Y



技术参数 Specifications:

最高工作压力(Max working Pressure):	230bar
可通过最大流量(Flow Max):	20L/min
内泄漏量(Internal Leakage):	<30ml/min (75~85% of Setting Pressure at 10L/min)
过滤精度(Filtration Of Oil):	25μm or better
使用温度(Temperature):	-30~+100℃(丁腈橡胶) (Standard Buna Seals)
插孔(Cavity):	T4-1(See Page 7.1.1)
安装扭矩(Installation torque):	24.5~27.2Nm

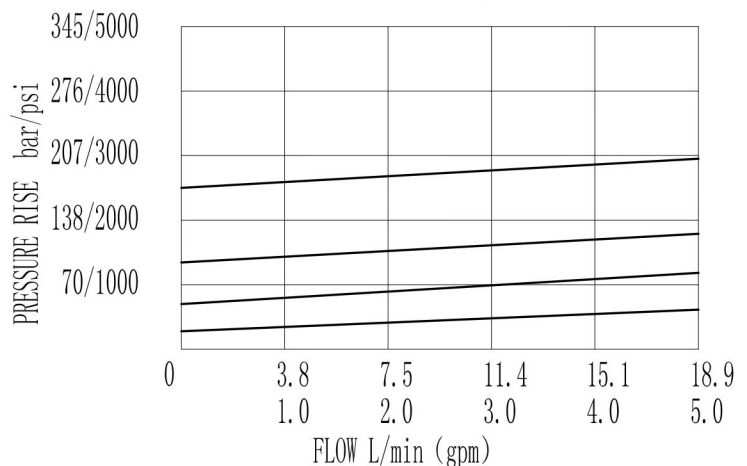


当①口压力未达到弹簧设定压力的85%时, ①到②不通, 超过85%并继续升高时, ①到②开始溢流, 至到弹簧的最高设定压力。

The valve blocks flow from ① to ② until 85% pressure is present at ①. With the continued increase pressure on ①, ① to ② began to overflow, until to the spring's maximum pressure.

注意: 1、此处的85%为大概值, 由于加工制造误差及实际使用流量的不同, 此数值会有变动。低的压力范围使用时, 此数值可能低至70%; 2、请在调压范围内使用。

32 cST Oil/45°C



X 调压方式 (ADJUSTMENTS)

03	内六角、防泄漏螺母 Leakproof hex. and socket screw	
05	铝制手轮及锁紧螺母 Alum. Knob and Locking Nut	

弹簧规格 (SPRINGS)

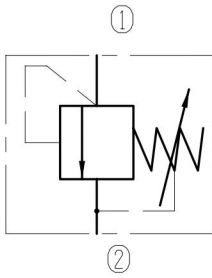
Y	调压范围 Press. range bar	每转压力增量 Press. increase bar/turn	标准设定压力 Standard setting bar	开启压力 Cracking press. bar
05	7.3~54	7.7	35	25
10	41~107	26	80	60
15	64~147	54	120	90
20	128~230	81	200	170

直动式溢流阀 (锥阀型)

Directly Operated Relief Valves (Poppet-type)

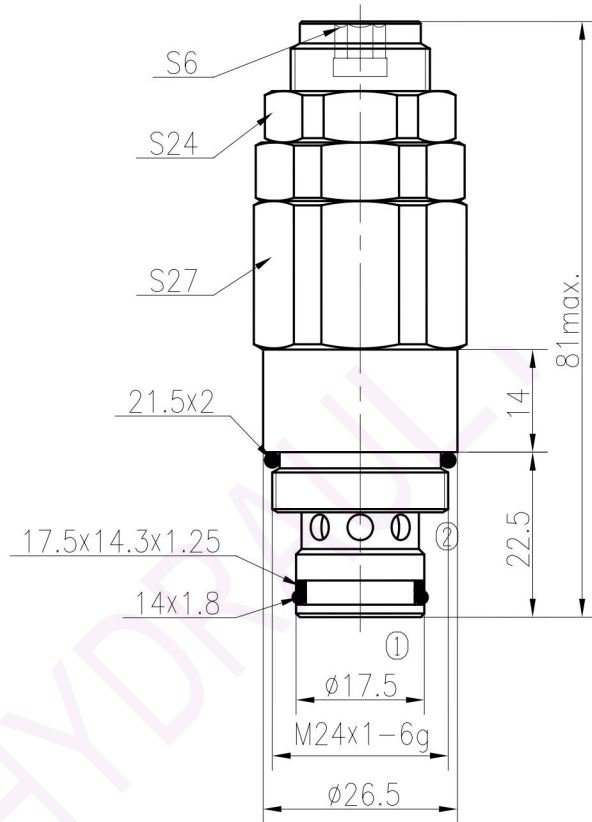


YF10-01C/X.Y



技术参数 Specifications:

最高工作压力(Max working Pressure):	350bar
可通过最大流量(Flow Max):	50L/min
内泄漏量(Internal Leakage):	≤30ml/min (75~85% of Setting Pressure at 30L/min)
过滤精度(Filtration Of Oil):	25μm or better
使用温度(Temperature):	-30~+100℃(丁腈橡胶) (Standard Buna Seals)
插孔(Cavity):	T-2303(See Page 7.1.10)
安装扭矩(Installation torque):	38.7~43.8Nm

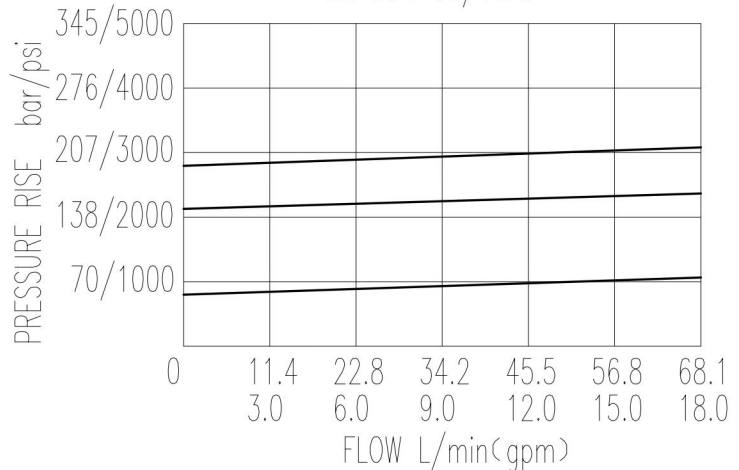


当①口压力未达到弹簧设定压力的85%时, ①到②不通, 超过85%并继续升高时, ①到②开始溢流, 至到弹簧的最高设定压力。

The valve blocks flow from ① to ② until 85% pressure is present at ①. With the continued increase pressure on ①, ① to ② began to overflow, until to the spring's maximum pressure.

注意: 1、此处的85%为大概值, 由于加工制造误差及实际使用流量的不同, 此数值会有变动。低的压力范围使用时, 此数值可能低至70%; 2、请在调压范围内使用。

32 cST Oil/45°C



调压方式 (ADJUSTMENTS)

03	内六角、防泄漏螺母 Leakproof hex. and socket screw	

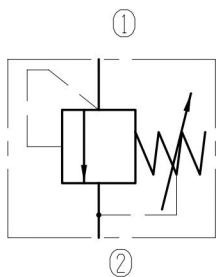
弹簧规格 (SPRINGS)

Y	弹簧规格 (SPRINGS)			
	调压范围 Press. range bar	每转压力增量 Press. increase bar/turn	标准设定压力 Standard setting bar	开启压力 Cracking press. bar
05	50~120	31	80	65
10	100~220	46	160	140
15	160~350	85	210	185

直动式溢流阀 (锥阀型) Directly Operated Relief Valves (Poppet-type)

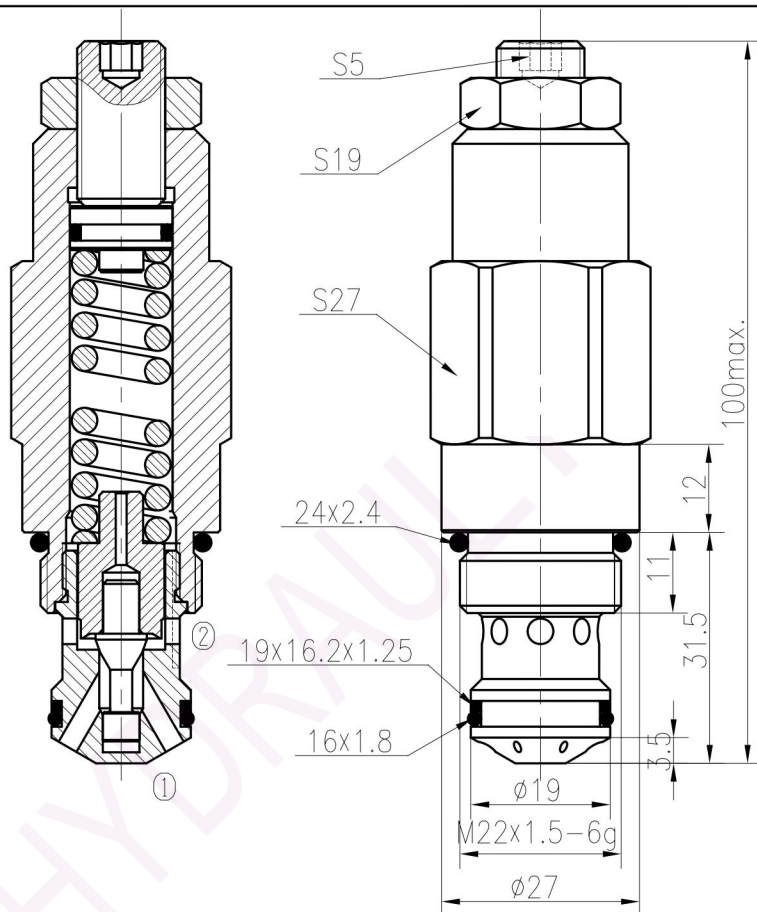


YF10-16/X.Y



技术参数 Specifications:

最高工作压力(Max working Pressure):	350bar
可通过最大流量(Flow Max):	50L/min
内泄漏量(Internal Leakage):	<30ml/min (75~85% of Setting Pressure at 30L/min)
过滤精度(Filtration Of Oil):	25μm or better
使用温度(Temperature):	-30~+100℃ (丁腈橡胶) (Standard Buna Seals)
插孔(Cavity):	T-2112(See Page 7.1.8)
安装扭矩(Installation torque):	33.9~36.7Nm

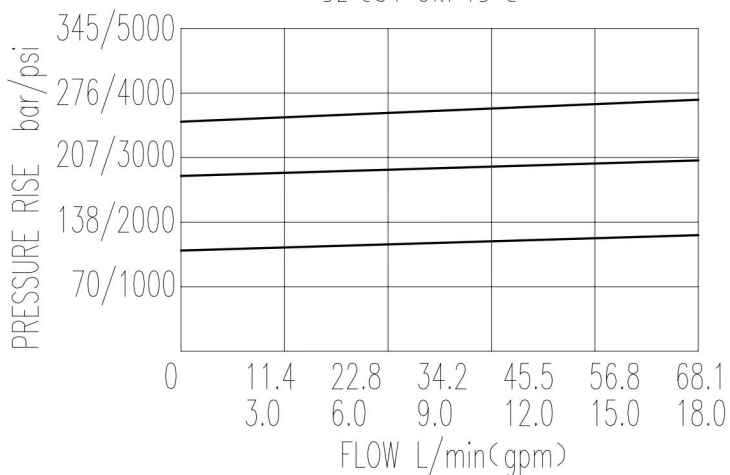


当①口压力未达到弹簧设定压力的85%时, ①到②不通, 超过85%并继续升高时, ①P到②开始溢流, 至到弹簧的最高设定压力。

The valve blocks flow from ① to ② until 85% pressure is present at ①. With the continued increase pressure on ①, ① to ② began to overflow, until to the spring's maximum pressure.

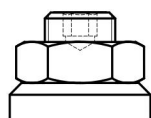
注意: 1、此处的85%为大概值, 由于加工制造误差及实际使用流量的不同, 此数值会有变动。低的压力范围使用时, 此数值可能低至70%; 2、请在调压范围内使用。

32 cST Oil/45°C



调压方式 (ADJUSTMENTS)

03 内六角、防泄漏螺母
Leakproof hex.
and socket screw



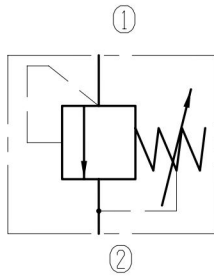
弹簧规格 (SPRINGS)

Y	调压范围 Press. range bar	每转压力增量 Press. increase bar/turn	标准设定压力 Standard setting bar	开启压力 Cracking press. bar
05	5~55	12	35	26
10	37~126	31	100	78
15	92~220	46	200	170
20	186~350	85	280	235

直动式溢流阀 (锥阀型) Directly Operated Relief Valves (Poppet-type)



YF10-19/X.Y



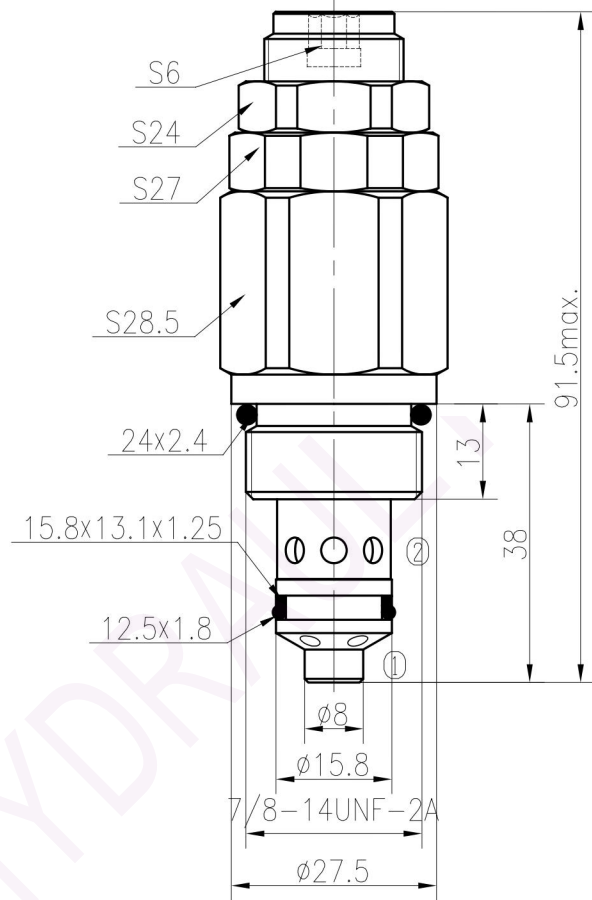
技术参数 Specifications:

最高工作压力(Max working Pressure):	350bar
可通过最大流量(Flow Max):	50L/min
内泄漏量(Internal Leakage):	<30ml/min (80~90% of Setting Pressure at 30L/min)
过滤精度(Filtration Of Oil):	25μm or better
使用温度(Temperature):	-30~+100℃(丁腈橡胶) (Standard Buna Seals)
插孔(Cavity):	T5-1(See Page 7.1.2)
安装扭矩(Installation torque):	33.9~36.7Nm

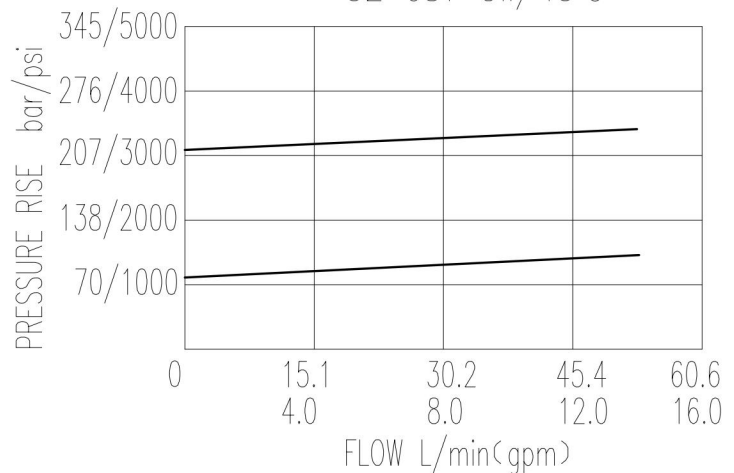
当①口压力未达到弹簧设定压力的85%时, ①到②不通, 超过85%并继续升高时, ①到②开始溢流, 至到弹簧的最高设定压力。

The valve blocks flow from ① to ② until 85% pressure is present at ①. With the continued increase pressure on ①, ① to ② began to overflow, until to the spring's maximum pressure.

注意: 1、此处的85%为大概值, 由于加工制造误差及实际使用流量的不同, 此数值会有变动。低的压力范围使用时, 此数值可能低至80%; 2、请在调压范围内使用。

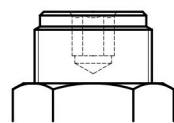


32 cST Oil/45°C



X 调压方式 (ADJUSTMENTS)

03 内六角、防泄漏螺母
Leakproof hex.
and socket screw



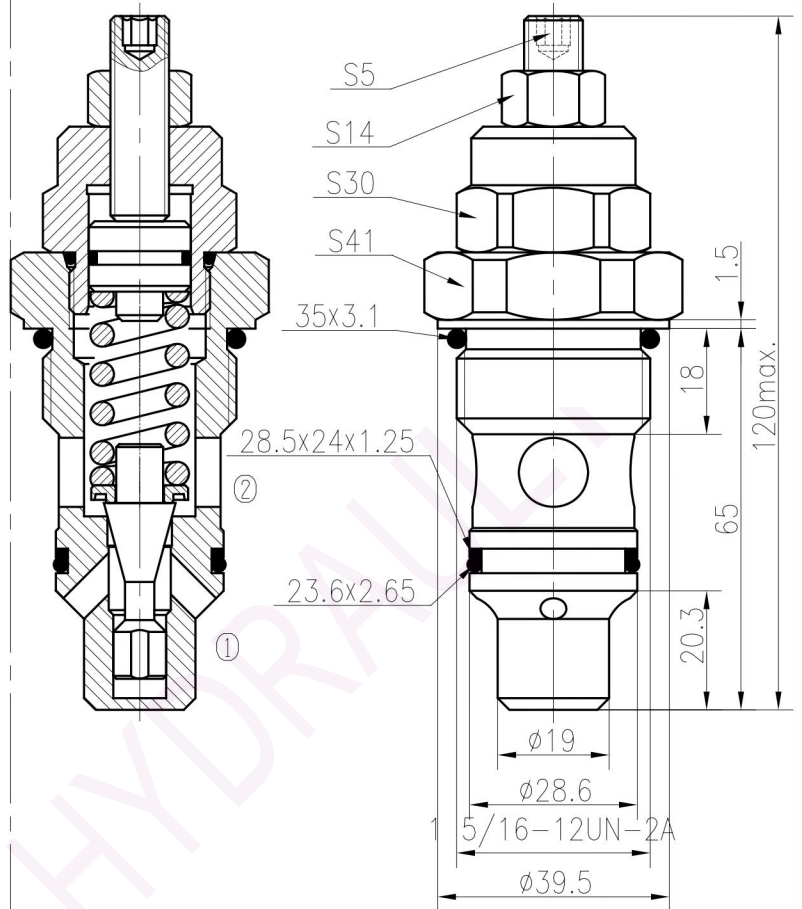
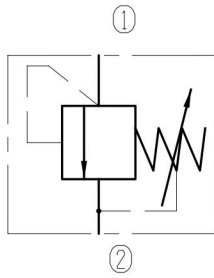
弹簧规格 (SPRINGS)

Y	调压范围 Press. range bar	每转压力增量 Press. increase bar/turn	标准设定压力 Standard setting bar	开启压力 Cracking press. bar
05	50~120	31	80	65
10	100~220	46	210	185
15	160~350	85	210	185

直动式溢流阀 (锥阀型) Directly Operated Relief Valves (Poppet-type)



YF12-00/X.Y



技术参数 Specifications:

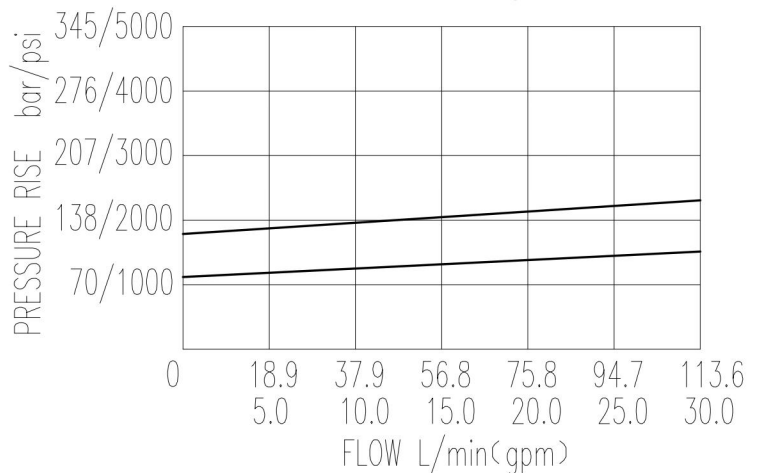
最高工作压力(Max working Pressure):	158bar
可通过最大流量(Flow Max):	113L/min
内泄漏量(Internal Leakage):	<30ml/min (75~85% of Setting Pressure at 60L/min)
过滤精度(Filtration Of Oil):	25μm or better
使用温度(Temperature):	-30~+100℃(丁腈橡胶) (Standard Buna Seals)
插孔(Cavity):	T-2113(See Page 7.1.8)
安装扭矩(Installation torque):	62.6~73.4Nm

当①口压力未达到弹簧设定压力的85%时, ①到②不通, 超过85%并继续升高时, ①到②开始溢流, 至到弹簧的最高设定压力。

The valve blocks flow from ① to ② until 85% pressure is present at ①. With the continued increase pressure on ①, ① to ② began to overflow, until to the spring's maximum pressure.

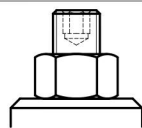
注意: 1、此处的85%为大概值, 由于加工制造误差及实际使用流量的不同, 此数值会有变动。低的压力范围使用时, 此数值可能低至70%; 2、请在调压范围内使用。

32 cST Oil/45°C



X 调压方式 (ADJUSTMENTS)

03 内六角、防泄漏螺母
Leakproof hex.
and socket screw



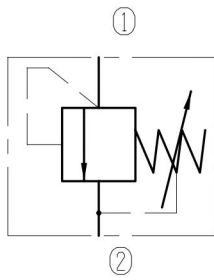
弹簧规格 (SPRINGS)

Y	调压范围 Press. range bar	每转压力增量 Press. increase bar/turn	标准设定压力 Standard setting bar	开启压力 Cracking press. bar
05	47~107	47	100	79
10	94~158	58	150	125

直动式溢流阀 (锥阀型) Directly Operated Relief Valves (Poppet-type)

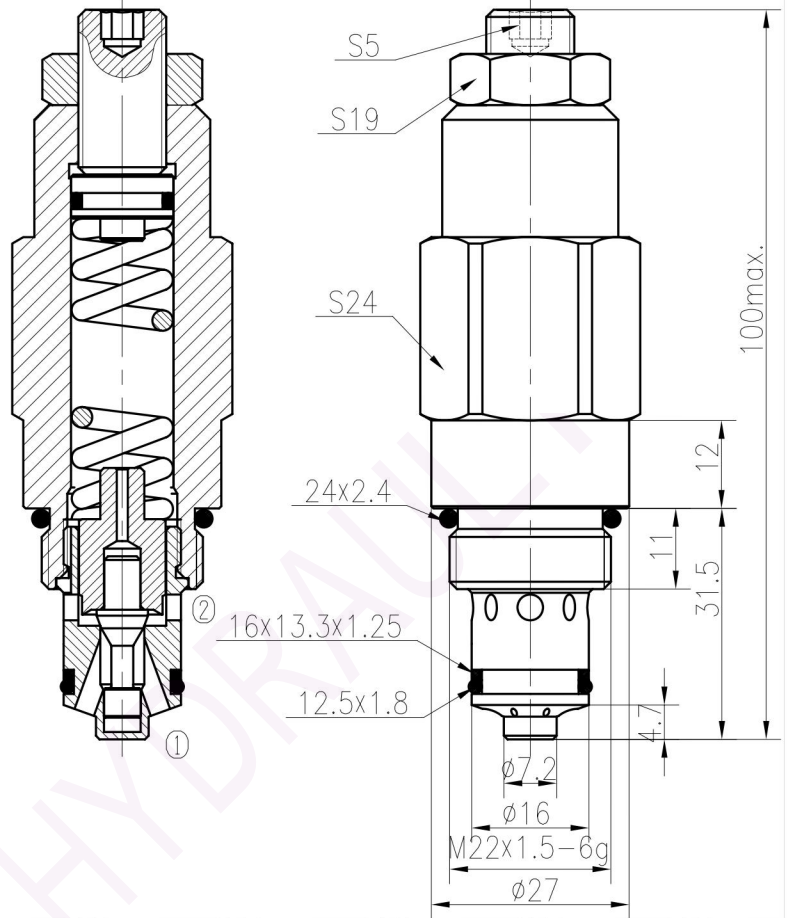


YF15-01/X.Y



技术参数 Specifications:

最高工作压力(Max working Pressure):	189bar
可通过最大流量(Flow Max):	35L/min
内泄漏量(Internal Leakage):	<30ml/min (75~85% of Setting Pressure at 30L/min)
过滤精度(Filtration Of Oil):	25 μ m or better
使用温度(Temperature):	-30~+100 $^{\circ}$ C (丁腈橡胶) (Standard Buna Seals)
插孔(Cavity):	T-2114 (See Page 7.1.8)
安装扭矩(Installation torque):	33.9~36.7Nm

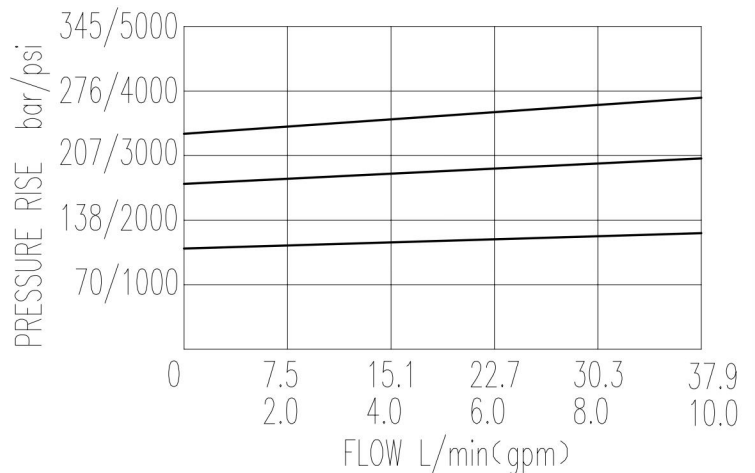


当 $\textcircled{1}$ 口压力未达到弹簧设定压力的85%时, $\textcircled{1}$ 到 $\textcircled{2}$ 不通, 超过85%并继续升高时, $\textcircled{1}$ 到 $\textcircled{2}$ 开始溢流, 至到弹簧的最高设定压力。

The valve blocks flow from $\textcircled{1}$ to $\textcircled{2}$ until 85% pressure is present at $\textcircled{1}$. With the continued increase pressure on $\textcircled{1}$, $\textcircled{1}$ to $\textcircled{2}$ began to overflow, until to the spring's maximum pressure.

注意: 1、此处的85%为大概值, 由于加工制造误差及实际使用流量的不同, 此数值会有变动。低的压力范围使用时, 此数值可能低至70%; 2、请在调压范围内使用。

32 cST Oil/45 $^{\circ}$ C



X 调压方式 (ADJUSTMENTS)

03 内六角、防泄漏螺母
Leakproof hex.
and socket screw



弹簧规格 (SPRINGS)

Y	调压范围 Press. range bar	每转压力增量 Press. increase bar/turn	标准设定压力 Standard setting bar	开启压力 Cracking press. bar
05	5~55	12	35	26
10	37~155	31	100	78
15	94~210	45	160	140
20	140~350	84	200	175