

SE360-9

Our Second largest excavator

- ▶ Engine model: Cummins QSL9
- ▶ Rated power: 214 kW
- ▶ Operating weight: 36.8 t

Product features

*Imported hydraulic parts, stable and reliable quality, high efficiency, mining and walking force;

*New cab and seat, new interior and new automatic air conditioning system with automatic ventilation regulation and comfortable operation;

*Enhanced working device and car, heavy-duty chassis parts, to adapt to the harsh working conditions, a variety of bucket options, optional hammer, Ripper, quick change device and other accessories of a landfill, mining, crushing, leveling work such as the use of a machine;

*Large tool box and fuel tank, electrical equipment centralized arrangement;

* Category box frame, side beam, side plate, angle steel reinforcement, wide gauge, long grounding length.



shantui e-shop

SHANTUI

VALUE THAT WORKS

Shantui Construction Machinery Co., Ltd.

ADDRESS:

No. 58, G327 Highway
Jining City, Shandong, CHINA

TEL: +86-537-2909369

FAX: +86-537-2311219

EMAIL: trade@shantui.com

SE360-9

Technical specifications:

Minimum ground clearance: 565 mm

Overall length: 11220 mm







Operating weight: 36.8 t

Overall height: 3560 mm

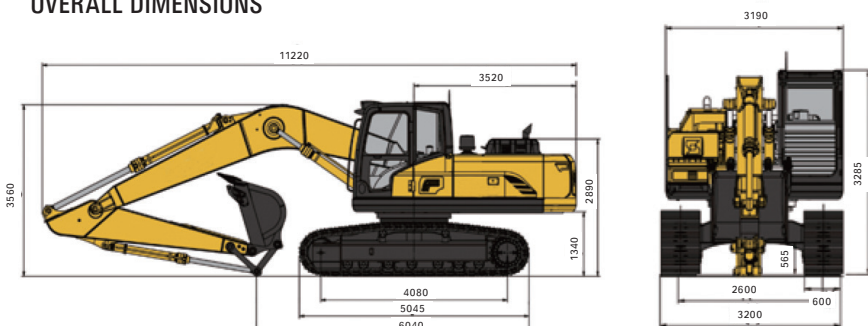
Ground pressure: 68.3 kPa

Overall width: 3200 mm

SE360-9

	ENGINE	Model	Cummins QSL9
		Type	High pressure and common rail, air-air intercooled, turbocharging
		Quantity of cylinders	6
		Bore x stroke	114 x 145 mm
		Displacement	8.9 L
		Power output	214 kW
		Maximum torque	-
	HYDRAULIC SYSTEM	Pump	Imported
		Type	Double piston pump plus gear pump
		Maximum discharge flow	2 x 300+27 L/min
		Control circuit	-
		Travel circuit	-
		Swing circuit	-
	TRAVEL SYSTEM	Travel motor	Variable axial piston motor
		Travel brakes	Lubricated double-disc
		Parking brake	Pressure release
		Travel shoes	2 x 49
		Travel speed	3.0/4.9 km/h
		Drawbar pulling force	315 kN
		Gradeability	70% (35°)
		Minimum ground clearance	565 mm
	OIL CAPACITY	Fuel tank	550 L
		Cooling system	35 L
		Engine oil	24 L
		Hydraulic oil tank	366 L
		System capacity	-
	SWING SYSTEM	Brake	Pressure Release Mechanical Braking
		Swing speed	10.5 rpm
		Tail swing radius	3520 mm
		Arm digging force	168 KN
		Bucket digging force	228 KN
	BUCKET	Bucket capacity	1.6 m ³
		Number of bucket teeth	-
		Bucket width	1730 mm
		Arm length	3.186 m
		Maximum digging reach/Maximum digging reach at ground level	11.12 m/10.915 m
		Maximum digging depth/height	7.34 m/10.05 m
		Maximum dumping height	7.09 m
		Minimum swing radius	4.335 m

OVERALL DIMENSIONS



▶ THE SPECIFICATIONS ARE SUBJECT TO CHANGE WITHOUT NOTICE. THE PICTURES MAY INCLUDE OPTIONS. THE ACTUAL COLOR & APPEARANCE OF THE PRODUCT MAY DIFFER FROM WHAT IS SHOWN.