

170 HP

# SD17

The all-purpose customer choice.

- ▶ Engine model: Weichai WP10G190E354
- ▶ Net power: 127 kW/170HP/1900 rpm
- ▶ Operating weight: 17 t



shantui e-shop

# SHANTUI

VALUE THAT WORKS

Shantui Construction Machinery Co., Ltd.

ADDRESS:  
No. 58, G327 Highway  
Jining City, Shandong, CHINA








TEL: +86-537-2909369  
FAX: +86-537-2311219  
EMAIL: trade@shantui.com

# 170 HP SD17

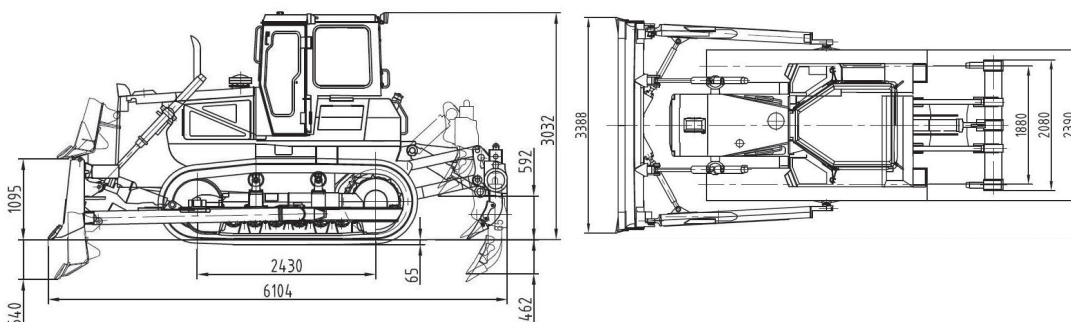
## Technical specifications:

|                        |               |
|------------------------|---------------|
| Blade Type             | Straight-tilt |
| Min. ground clearance: | 400 mm        |
| Ground pressure:       | 0.067 MPa     |
| Min. turning radius:   | 4.466 m       |
| Gradeability:          | 30°           |
| Track gauge:           | 1880 mm       |

SD17

|   |                           |   |  |            |             |
|---|---------------------------|---|--|------------|-------------|
|    | ENGINE                    | Model & type                            | Weichai WP10G190E354; water-cooled, in-line, 4-stroke injection direct                                 |            |             |
|   |                           | Horsepower                              | Gross power: 140/187/1900 kW/HP/rpm // Net power: 127/170/1900 kW/HP/rpm                               |            |             |
|   |                           | Number of cylinders                     | 6-126 x 130 mm (bore x stroke)   |            |             |
|   |                           | Piston displacement                     | 9.726 L  |            |             |
|   |                           | Min. fuel consumption                   | 215 g/kW-h   |            |             |
|   |                           | Maximum torque                          | 920/1300-1500 N-m@1300 rpm   |            |             |
|    | POWER TRANSMISSION SYSTEM | Torque converter                        | 3-element, 1 stage, 1 phase  |            |             |
|   |                           | Transmission                            | Planetary gear type, power-shift, forced lubrication   |            |             |
|   |                           | Main drive                              | Spiral bevel gear, single-stage speed reduction, splash lubrication                                    |            |             |
|   |                           | Steering clutch                         | Lubricated, multi-disc, spring loaded, hand hydraulically separated, inter-linking with steering brake |            |             |
|   |                           | Steering brake                          | Lubricated, floating band structure, foot brake with hydraulic booster                                 |            |             |
|   |                           | Final drive                             | 2-stage speed reduction of spur gear, splash lubrication   |            |             |
|    | TRAVEL SPEED              | Gear                                    | 1st  | 2nd        | 3rd         |
|   |                           | Forward                                 | 0~3.5 km/h   | 0~6.2 km/h | 0~10.6 km/h |
|   |                           | Reverse                                 | 0~4.5 km/h   | 0~8.0 km/h | 0~13.1 km/h |
|   |                           |   |  |            |             |
|    | UNDERCARRIAGE SYSTEM      | Type                                    | Sprayed beam, suspended structure of equalizer   |            |             |
|   |                           | Carrier rollers                         | 2 each side  |            |             |
|   |                           | Track rollers                           | 6 each side  |            |             |
|   |                           | Track type                              | Assembled, single-grouser  |            |             |
|   |                           | Width of track shoes                    | 510 mm   |            |             |
|   |                           | Pitch                                   | 203.2 mm   |            |             |
|  | HYDRAULIC SYSTEM          | Maximum pressure                        | 14 MPa   |            |             |
|   |                           | Pump type                               | Gear pump  |            |             |
|   |                           | Discharge                               | 213 L/min  |            |             |
|   |                           | Bore of working cylinder × no.          | 110 mm × 2   |            |             |
|  | BLADE                     | Blade type                              | Straight-tilt  |            |             |
|   |                           | Dozing capacity                         | 4.5 m³   |            |             |
|   |                           | Efficiency (Theoretical value 40 m)     | 250 m³/h   |            |             |
|   |                           | Blade width                             | 3388 mm  |            |             |
|   |                           | Blade height                            | 1149 mm  |            |             |
|   |                           | Maximum drop below ground               | 540 mm   |            |             |
|   |                           | Lifting height of blade                 | 1095 mm  |            |             |
|  | RIPPER (OPTIONAL)         | Maximum digging depth of 3-shank ripper | 572 mm   |            |             |
|   |                           | Maximum lift above ground               | 592 mm   |            |             |
|   |                           | Weight of 3-shank ripper                | 1667 kg  |            |             |

### OVERALL DIMENSIONS Straight-tilt blade



▶ THE SPECIFICATIONS ARE SUBJECT TO CHANGE WITHOUT NOTICE. THE PICTURES MAY INCLUDE OPTIONS. THE ACTUAL COLOR & APPEARANCE OF THE PRODUCT MAY DIFFER FROM WHAT IS SHOWN.