

## SE450-9

Our Second largest excavator

- ▶ Engine model: Cummins QSM11
- ▶ Rated power: 250 kW
- ▶ Operating weight: 46.8 t

### Product features

\*Imported hydraulic parts, stable and reliable quality, high efficiency, mining and walking force;

\*New cab and seat, new interior and new automatic air conditioning system with automatic ventilation regulation and comfortable operation;

\*Enhanced working device and car, heavy-duty chassis parts, to adapt to the harsh working conditions, a variety of bucket options, optional hammer, Ripper, quick change device and other accessories of a landfill, mining, crushing, leveling work such as the use of a machine;

\*Large tool box and fuel tank, electrical equipment centralized arrangement;

\*Category box frame, side beam, side plate, angle steel reinforcement, wide gauge, long grounding length.



shantui e-shop

# SHANTUI

VALUE THAT WORKS

Shantui Construction Machinery Co., Ltd.

ADDRESS:  
No. 58, G327 Highway  
Jining City, Shandong, CHINA

TEL: +86-537-2909369  
FAX: +86-537-2311219  
EMAIL: trade@shantui.com

# SE450-9

## Technical specifications:

Minimum ground clearance: 570 mm

Overall length: 12110 mm







Operating weight: 46.8 t

Overall height: 3745 mm

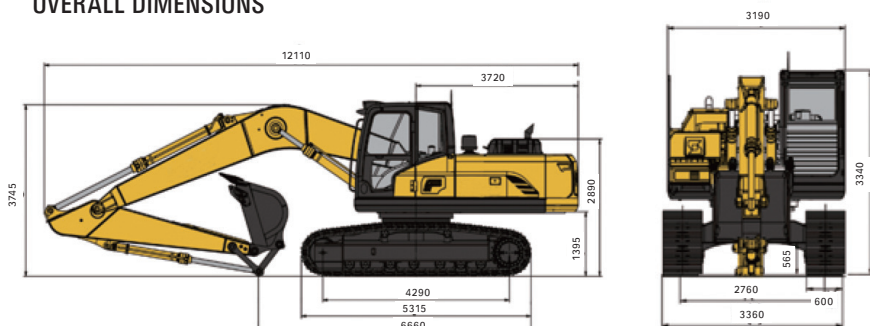
Ground pressure: 81.9 kPa

Overall width: 3360 mm

SE450-9

	ENGINE	Model	Cummins QSM11
		Type	High pressure and common rail, air-air intercooled, turbocharging
		Quantity of cylinders	6
		Bore x stroke	125 x 147 mm
		Displacement	10.8 L
		Power output	250 kW
		Maximum torque	-
	HYDRAULIC SYSTEM	Pump	Imported
		Type	Double piston pump plus gear pump
		Maximum discharge flow	2 x 360+27 L/min
		Control circuit	-
		Travel circuit	-
		Swing circuit	-
	TRAVEL SYSTEM	Travel motor	Variable axial piston motor
		Travel brakes	Lubricated double-disc
		Parking brake	Pressure release
		Travel shoes	2 x 49
		Travel speed	3.3/5.6 km/h
		Drawbar pulling force	364 kN
		Gradeability	70% (35°)
		Minimum ground clearance	570 mm
	OIL CAPACITY	Fuel tank	550 L
		Cooling system	34 L
		Engine oil	35 L
		Hydraulic oil tank	366 L
		System capacity	-
	SWING SYSTEM	Brake	Pressure Release Mechanical Braking
		Swing speed	10 rpm
		Tail swing radius	3720 mm
		Arm digging force	242 KN
		Bucket digging force	288.5 KN
	BUCKET	Bucket capacity	2.1 m <sup>3</sup>
		Number of bucket teeth	-
		Bucket width	1748 mm
		Arm length	3.381 m
		Maximum digging reach/Maximum digging reach at ground level	12.04 m/11.83 m
		Maximum digging depth/height	7.815 m/10.785 m
		Maximum dumping height	7.6 m
		Minimum swing radius	4.84 m

## OVERALL DIMENSIONS



▶ THE SPECIFICATIONS ARE SUBJECT TO CHANGE WITHOUT NOTICE. THE PICTURES MAY INCLUDE OPTIONS. THE ACTUAL COLOR & APPEARANCE OF THE PRODUCT MAY DIFFER FROM WHAT IS SHOWN.