

2700k

3000k

4000k

6500k



## Features



- Sourced by high output 2835 LED with good color conformity.
- 99.99% gold thread, pure copper bracket coated with silver.
- USA Intematix phosphor with CRI > 80.
- SDCM ≤ 5 each BIN.
- Double layer rolled copper FPC.
- 3M 300LSE tape attached.
- CE, RoHS and UL certified.

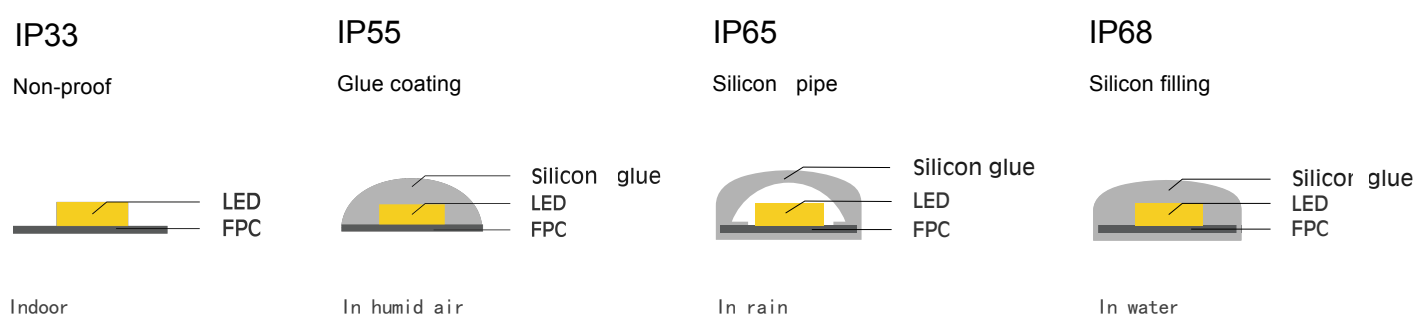
## Application



- Apply to 3-6cm depth signs at airports, metros, banks, buildings and shopping malls, etc.

# Advantages >

## Different IP options



## Full CCT ranges from 2300K to 12000K



## Various CRI option from 75 to 95



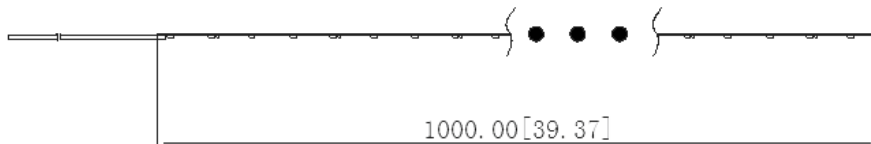
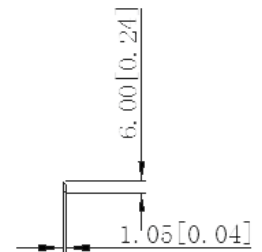
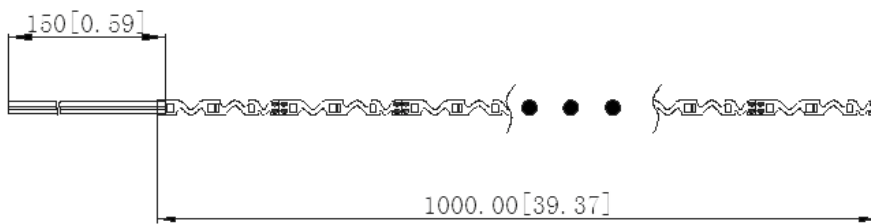
Parameters >

Part Number	Dimensions(mm)	LED Type	LEDs/m	Voltage(V)	Power(W/m)	LM/LED	CCT/K	IP Grade
SE60LA2-S	5000*6	SMD 2835	60	DC12	6.2	11	6500	IP33

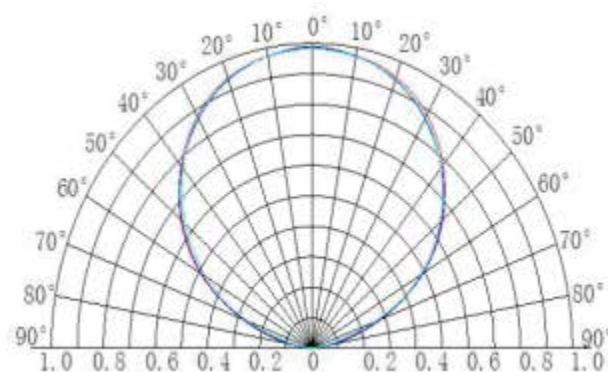
Dimension >

Unit:mm

IP33

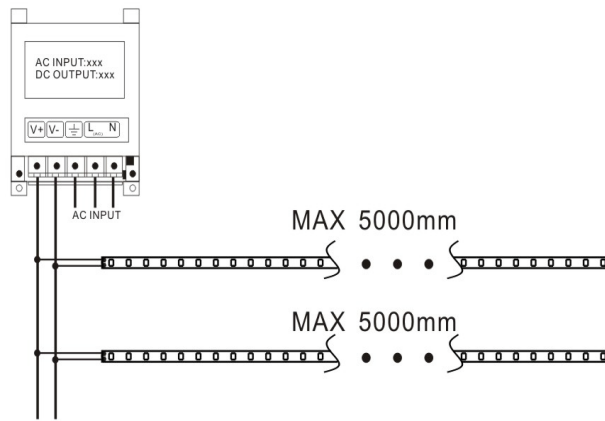


Beaming Angle >

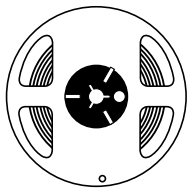


## Wire Connection >

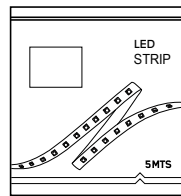
White&Red wire to positive  
White&Black wire to negative



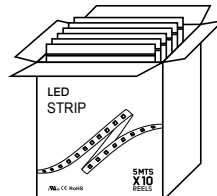
## Packing >



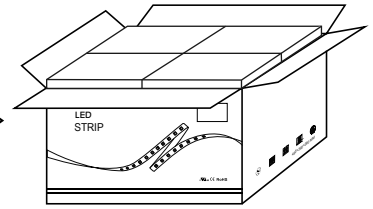
5 meter per roll



One roll per antistatic bag



10 rolls per box



450m per carton IP33

## Packing Specification >

- Antistatic bag adopted
- Packing information

Part Number	Carton dimension(mm)	Bags per carton(pcs)	Quantity per carton(m)	Net Weight(kg)	Gross Weight(kg)
SE60LA2-S	495*450*215	90	450	4.5	7.5

- Due to the packing manner difference, please subject to the actual package in case of discrepancy found between the datasheet and actual package.

## Warning



- Disassembling or modifying the product is forbidden.
- Installation with power on is forbidden.
- Any organic solvent chemical is forbidden.
- Isolation and corrosion prevention on all wiring points and wire ends.
- Make sure the power wire is big enough and ensure the voltage and connection are all correct before power on.
- Installation, maintenance should be done by professional staff.
- 5M in a serial connection maximum for DC12/24V strips.
- The power wire between power supply and LED strips should be less than two meters to keep the same brightness on all parts.

## Declaration



- Warranty: 3 years.
- To ensure the safety, the broken wires need to be replaced by the manufacturer or the service agent, or by the qualified staff.
- The given data in the specification is the laboratory data, there may be discrepancy found in the actual products.
- The given drawings in the specification are only for reference, there may be discrepancy found in the actual products.
- The products are subject to change without prior notification.



RoHS

### Company Address:

Rm. WS, 9F, LuBan Building, Hongli West Road, Futian District,  
Shenzhen, China 518034

### Factory Address:

No. B, Xinyongfeng Industrial Area, Yingrenshi Village, Shiyuan Town,  
Bao'an District, Shenzhen, China 518000

TEL: +86-755-83544570

FAX: +86-755-83056229

Website: [www.lbyled.com](http://www.lbyled.com)

E-mail: [info@szlby.cn](mailto:info@szlby.cn)



**LBY LED**  
signs never been so easy