

Roller Shutters Bars

YE24LA2-50-A0 YE30GA1-A0-A0



Shenzhen LingBenYang Co.,Ltd.

17D Block A, Qingtianhuating Building, Shangbao Road, Futian District, Shenzhen China, 518034

Tel: +86-755-8354-4570

Fax: +86-755-8305-6229

Web: www.szlb.cn

Email: info@szlb.cn





Application

Apply to 15-40 cm depth double-sided light box or 6-20 cm depth single-sided light box at airports, metros, banks, buildings and shopping malls, etc.

Features

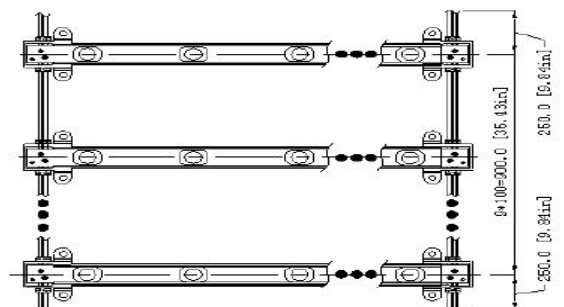
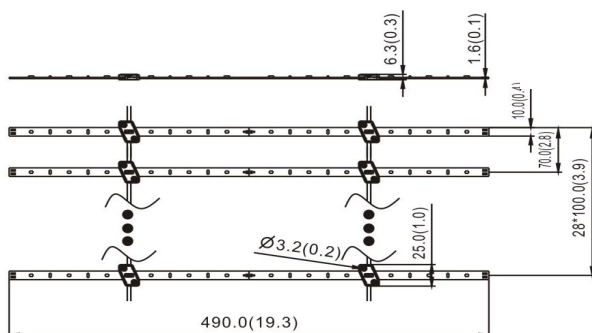
1. Adopting high efficiency SMD2835 LED, higher brightness.
2. Matrix arrangement of LED, no light spot, uniform brightness.
3. Lead wires is welded on PCB, tight and stable.
4. Various serial products, meet different illumination requirements.
5. Roller shutters, easily and fast installed.
6. CE, ROHS and UL certified.

Parameters

Items	Parameters	
Part Number	YE24LA2-50-A0	YE30GA1-A0-A0
CCT(K)	7000	
Voltage (V)	DC12	
LED Qty of Single Bar	12	30
Power of Single Bar(W)	4.08	7.2
Luminous Flux of Single Bar(lm)	420	620
Distance Between Bars(mm)	100	100
Protection Grade	IP33	IP65
Dimension(mm)	490*10*10.6	982*36*9.8
Beaming Angle(°)	120	160
Working Tem.(°C)	-25~+60	
Storage Tem.(°C)	-25~+70	

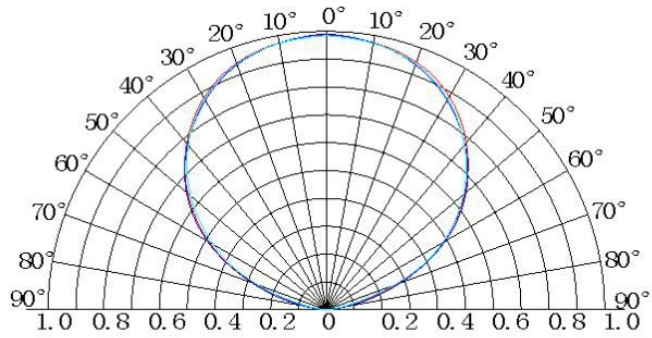
Dimension

Unit:mm





Beaming Angle



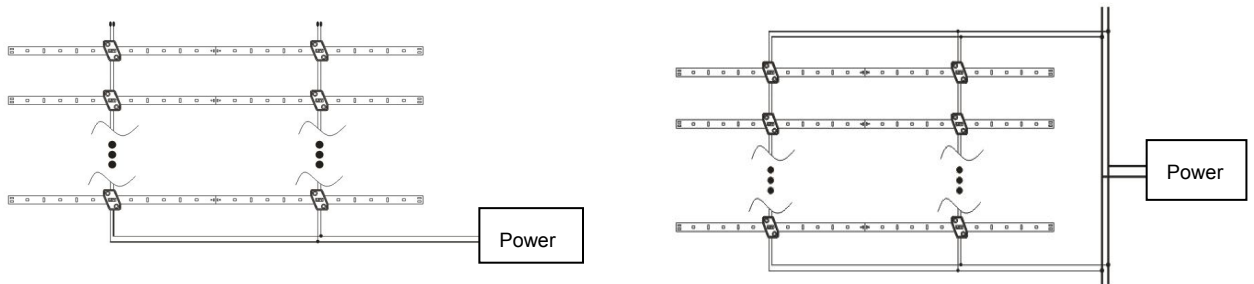
Reference Scheme

Material	Depth (mm)	Illumination(lux)
		YE24LA2-50-A0
Fabric	80	2100-2300
	100	1900-2100
	120	1700-1900
	150	1600-1700
Panel	80	3100-3300
	100	2900-3100
	120	2600-2800
	150	2400-2600
Distance between bars(mm)		100

Remark:

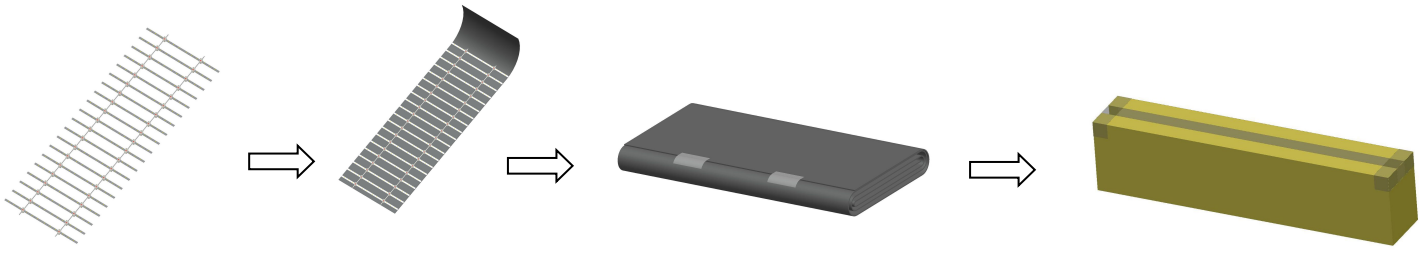
1. The luminous transmittance of the advertising fabric is 28%;the luminous transmittance of the white box panel is 56%.
2. The above luminance data is the average data with uniform surface illumination under this depth.
3. The above data is for reference only.
4. Testing size: 1000*1000mm.

Wire Connection





Packing



Each roll protected by PEP foam, 8/10rolls in a carton

Packing Specification

1. Packing information

Model	YE24LA2-50-A0	YE30GA1-A0-A0
Carton Dimension(mm)	585*240*270	1015*190*215
Bars per roll	28	10
Rolls per carton(pcs)	8	10
Net Weight(kg)	4.16(1±10%)	16.70(1±10%)
Gross Weight(kg)	5.50(1±10%)	17.45(1±10%)

2. Due to the packing manner difference, please adhere to the original products in case of discrepancy found between the picture and actual product.

Warning

1. Disassembling or modifying the product is forbidden.
2. Installation with power on is forbidden.
3. Any organic solvent chemical is forbidden.
4. Acidic or alkaline adhesive is forbidden when install, neutral glass cement could be used for installation purpose, make it drying in opening sites for four hours.
5. Isolation and corrosion prevention on all wiring points and wire ends.
6. Make sure the power wire is big enough and ensure the voltage and connection are all correct before power on.
7. This products shall be used in a sign, do not expose it in the opening site.
8. Installation, maintaining shall be done by professional staff.
9. 1 roll in a serial connection maximum.
10. The power wire between power supplier and product should be less than 2 meters to keep the same brightness on all parts.



Declaration

1. Warranty: 3 years.
2. To ensure the safety, the broken wires need to be changed by the manufacturer or the service agent, or by the staff with the similar qualification
3. The given data in the specification is the laboratory data, there may be discrepancy found in the actual products.
4. The given drawings in the specification are only for reference, there may be discrepancy found in the actual products.
5. The products are subject to change without prior notification.

