

MPB16 Series

16mm Metal Pushbutton Switches



SPECIFICATIONS

- RATING :** 2A/36VDC
 - ELECTRICAL LIFE :** 200,000 make-and-break cycles at full load
 - MECHANICAL LIFE :** 1,000,000 cycles
 - INSULATION RESISTANCE :** 1,000 MΩ min. at 500VDC
 - DIELECTRIC STRENGTH :** 2,000V RMS @ sea level
 - CONTACT RESISTANCE :** 50 mΩ max.
 - OPERATION TEMPERATURE :** -20°C~+70°C
 - TRAVEL:** About 2.0±0.20mm
 - OPERATION PRESSURE :** 4.5N±1.5N
 - INGRESS PROTECTION :** IP67
 - TORQUE :** 11.5 kgf · cm
 - THICKNESS :** 8.0mm (Max.)
- Current limiting resistor is required to limit LED forward current to 20mA.**

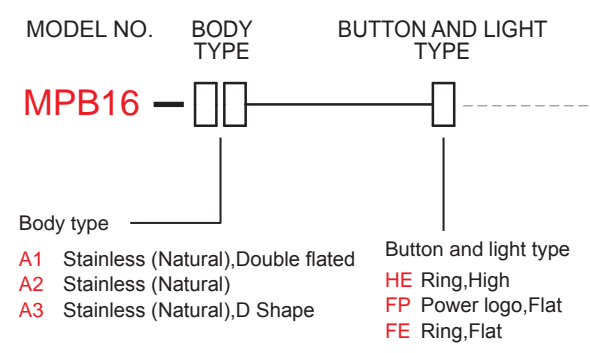
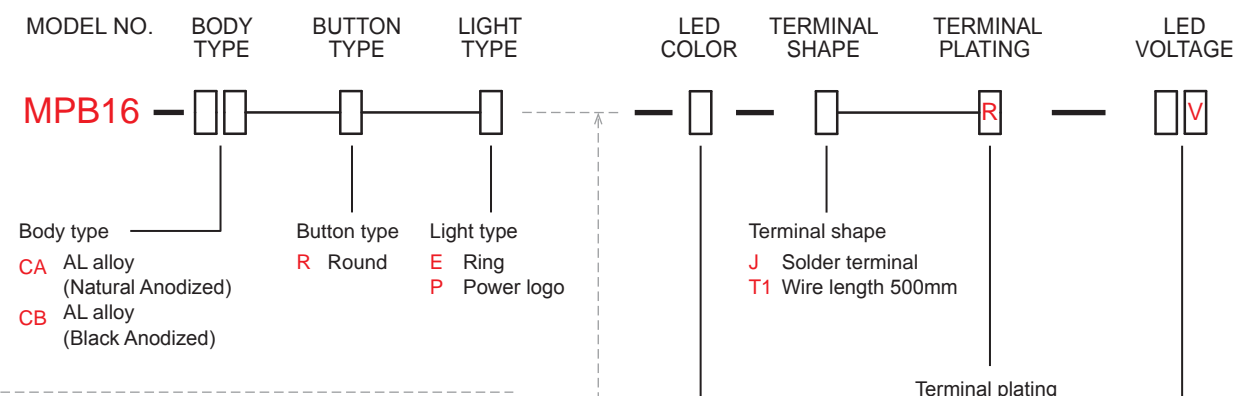
MATERIALS

- BUSHING :** Aluminum alloy / Stainless Steel
- BASE :** PBT (UL 94-V0)
- ACTUATOR :** PC (Translucent UL 94-V2)
- CAP :** Aluminum alloy / Stainless Steel
- SPRING :** Steel.
- SEALING :** Silicone (Translucent).
- O-Ring :** Silicone (Translucent).
- TERMINAL :** Brass ,Gold plated.
- CONTACT :** Silver alloy.
- HEX NUT :** Brass (Nickel plated).

MPB16 Pushbutton Switches



HOW TO ORDER



LED color	
ITEM NO	COLOR
0	Without LED
1	White
3	Red
5	Yellow
6	Green
7	Blue
DUAL COLOR LED	
A	Red&Green
RGB COLOR LED	
RGB	RGB

Resistance (About LED Voltage)	
0	Without Resistance
3V	LED input 3 VDC, 47Ω * Red/Yellow led type only
6V	LED input 6 VD, 180Ω
12V	LED input 12 VDC, 470Ω
24V	LED input 24 VDC, 1000Ω

※ ohms value of resistance tolerance: ±5%

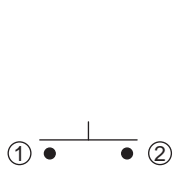
EXAMPLE:
 MPB16-CARE-0-JR-0 (Without LED)
 MPB16-CARE-□-JR-□V
 LED color LED voltage

MPB16 Series

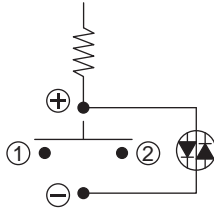
16mm Metal Pushbutton Switches

CIRCUIT

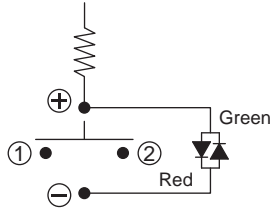
※ According to the input voltage adjustment resistance



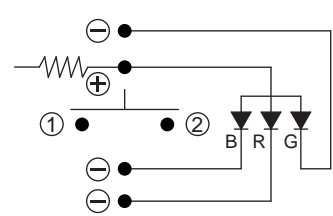
Without Led



Single Color Led



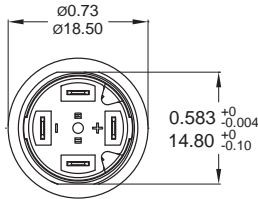
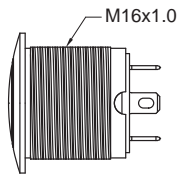
Dual Color Led



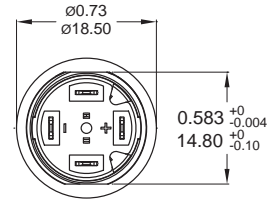
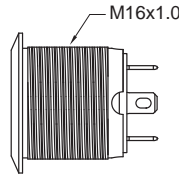
RGB Color Led

BODY TYPE

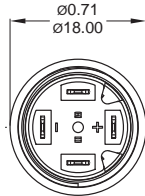
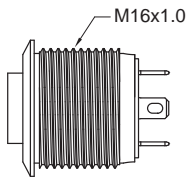
CA/CB Aluminum alloy



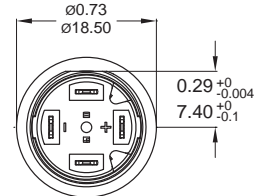
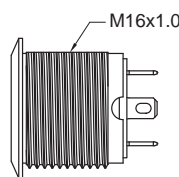
A1 Stainless Steel



A2 Stainless Steel

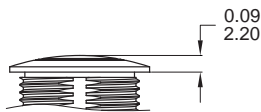


A3 Stainless Steel (D Shape)

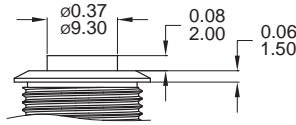


BUTTON TYPE

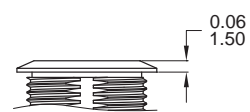
R Round Button



H High Button

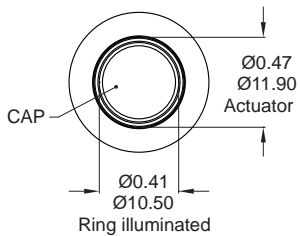


F Flat Button

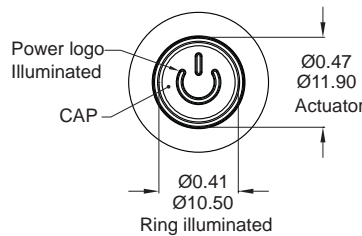


LIGHT TYPE

E Ring, Round



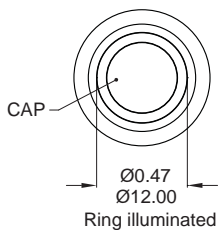
P Power logo, Round



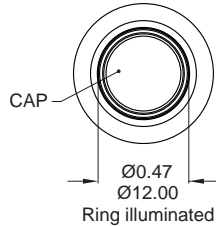
* E,P light type only for CA,CB body.

* HE,FE,FP light type only for A1,A2,A3 body.

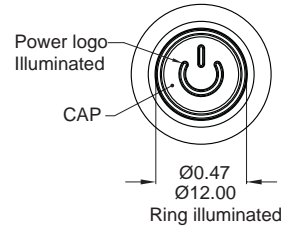
HE Ring, High



FE Ring, Flat

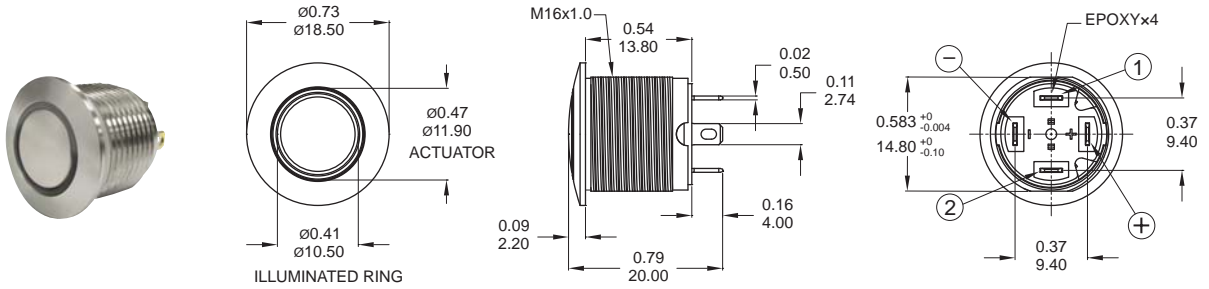


FP Power logo, Flat



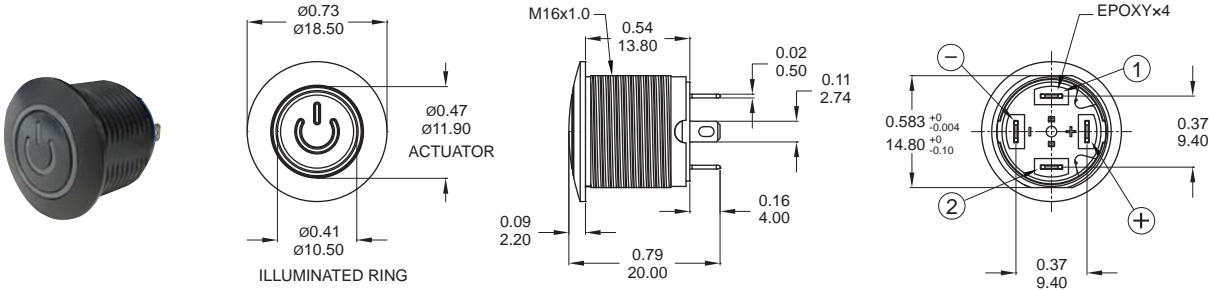
DIMENSION

E Ring



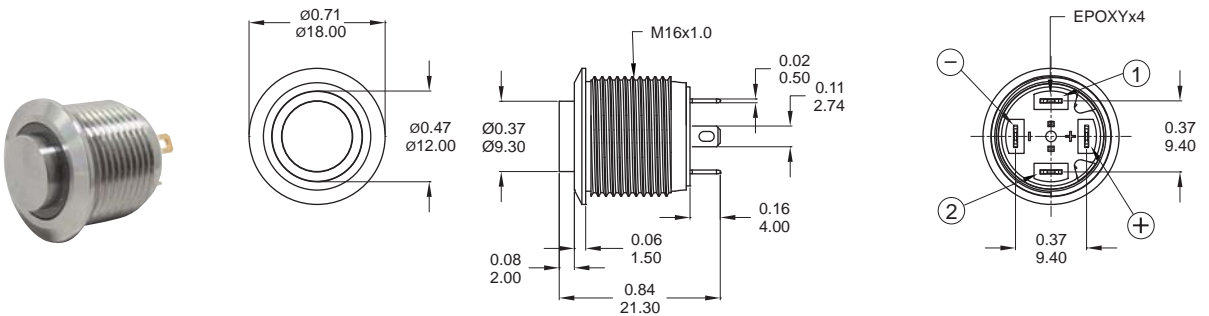
Part No. Shown : MPB16-CARE-□-JR-0V

P Power logo



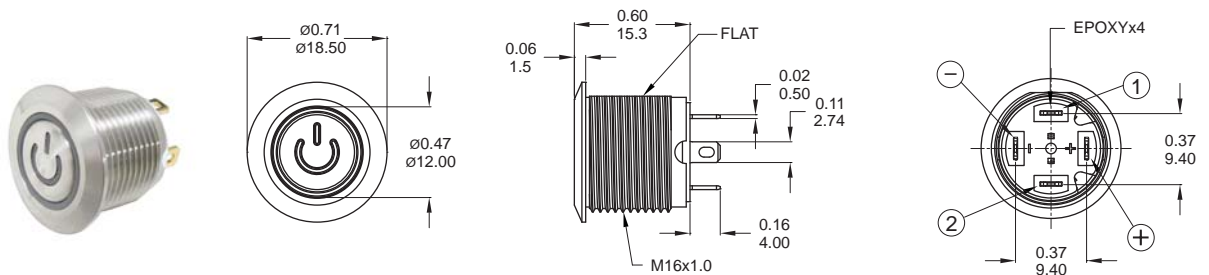
Part No. Shown : MPB16-CBRP-□-JR-0V

HE Ring



Part No. Shown : MPB16-A2HE-□-JR-0V

FP Power logo



Part No. Shown : MPB16-A3FP-□-JR-0V

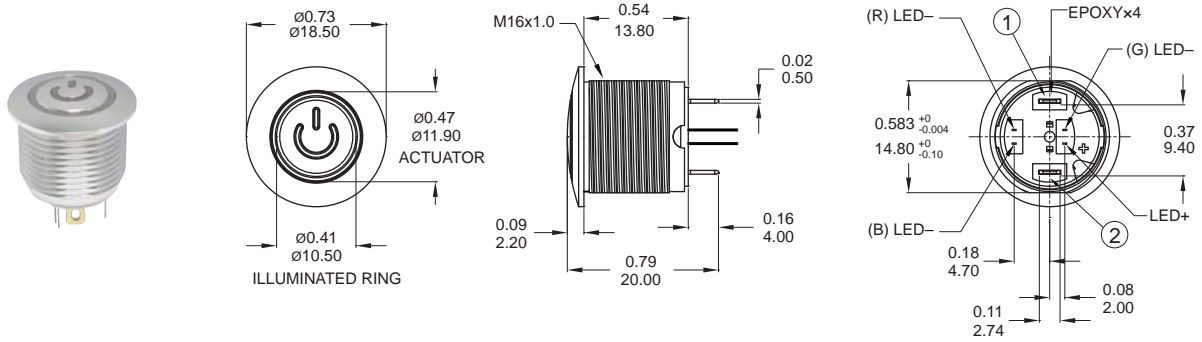


MPB16 Series

16mm Metal Pushbutton Switches

DIMENSION

E Ring

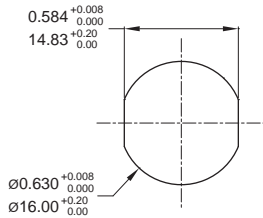


Part No. Shown : MPB16-CARE-RGB-JR-0V

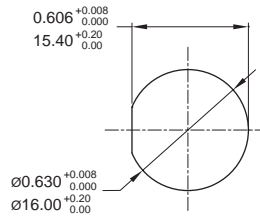
PANEL CUTOUT / HARDWARE

PANEL CUTOUT

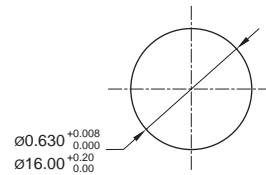
CA/CB/A1 Type



A3 Type

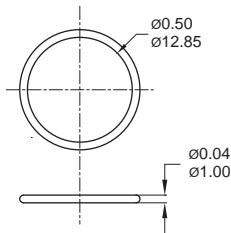


A2 Type

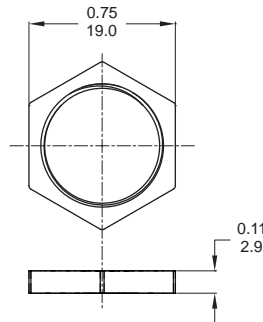


HARDWARE

O-RING



M16 NUT



T1 ※ Wire=Multi-wire lead AWG20, section 0.6mm², UL approved (Black / Red / Green)

