

One-Stop PCB Prototype Board Solution

PCB is an abbreviation of printed circuit Boards. Engineers will design a Prototype Board before it is manufactured therefore having the ability to detect flaws early on and quickly pinpoint which components need adjusting. Without prototyping, uncovering errors and flaws can cause inadequate performance which is time consuming and could extend a projects time frame, leading to lost revenue and unhappy customers.

PCBs are an integral part of many electronic devices and if there is inadequate performance after production it can be costly. Prototyping PCBs Board before production can help avoid this as the circuit Board Prototype can be tested to make sure it is working properly before moving on to a more complex design and eventually full quantity production. Prototype assembly and test gives you feedback on the strength of your circuit, PCB layout design and whether the design meets all the requirements for which it is intended e.g. functional, performance, physical requirements.

You need a trusted PCB Prototype Board supplier and manufacturer

Why use a PCB Prototype Board?

Using a PCB Prototype Board service over a standard PCB manufacturing production run can save time, money and also produce a more superior product at the end. When a new PCB design is being developed it will go through a number of tests which need to happen quickly otherwise this could result in lost revenue. Engineers also use Prototype PCBs Board to test single functions of a more complex product that contains multiple PCBs. If these test functions are not looked at individually and there is a performance issue later on, the engineer will not be able to easily identify which Board is causing the problem. Finding this out could take time and resources that could have been saved by prototyping the individual functions. Prototyping is worth considering if the following conditions apply:

- New products
- Quality and design testing
- Complex components
- Modeling purposes

PCB Prototype Board Applications

PCBs connect components through various related circuits and come in different variations allowing them to perform under a wide range of circumstances. Areas include:

- Consumer electronics
- Medical devices
- Automotive components
- Industrial equipment
- Lighting technologies
- Aerospace instrumentation

PCB Prototype Board suppliers and manufacturer

Whether you are somewhere in the world, as long as you need PCB prototype board, we can provide the best price and service, as well as product quality. Our PCB prototype board customers are all over the world, such as:

PCB Prototype Board UK

PCB Prototype Board India

PCB Prototype Board Canada

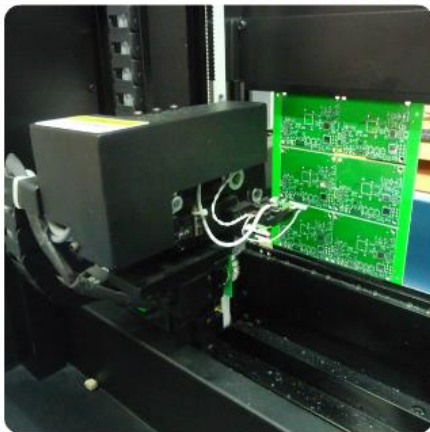
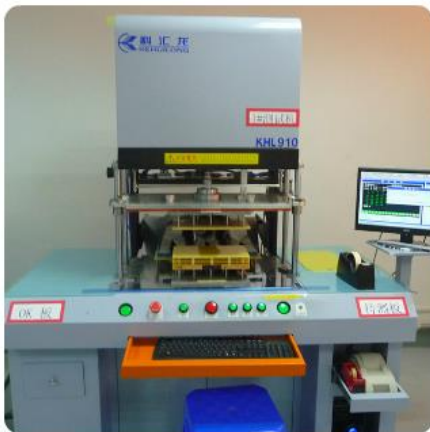
PCB Prototype Board France

PCB Prototype Board USA

PCB Prototype Board Malaysia

.....

PCB Prototype Boards Factory



PCB Prototype Board Fabrication

Learn more about JHY PCB by exploring the manufacturing capability of PCB Prototype Board below. We can do more than you can imagine.

Item	Manufacturing Capability
Number of Layers	1 – 8layers
Order Quantity	5pcs – 100pcs
Laminate	FR-4 Standard
Maximum PCB Size (Length x Width)	600*1000mm
Board Dimensions tolerance	±0.1mm – ±0.3mm
Board Thickness	0.4mm – 4mm
Board Thickness Tolerance	±0.1mm – ±10%
Copper Thickness	1–6OZ
Min Tracing/Spacing	2mil/2mil
Solder Mask Color	Green, White, Blue, Black, Red, Yellow
Silkscreen Color	White, Black
Surface Finish	HASL, LF HASL, ENIG
Test	Flying probe, Testing Fixture

Why JHY PCB is your right supplier and manufacturer for PCB

Prototype?

Prototyping stage is most critical before mass production. JHY PCB not only makes your boards quickly but also makes your job right correctly as well as cost-effectively. This greatly reduces your cost and shorten the time for developing your electronic products.

The economical solution for circuit board prototypes with 1, 2, 4, 6, 8, 10 or 12 layers, and a small overall area. Best price and lead time can be offered.

- Save money&time! Achieve peace of mind!
- A professional and trustworthy PCB prototype manufacturer.

- Fastest PCB Prototype.
- One stop solution for various PCB&SMT Stencil.
- Low cost for simple PCB.
- Affordable price for high-tech PCB.
- Minimum orders 1pcs.
- 24-hour online customer service.
- Professional PCB engineer for one-to-one service.
- Shipment on time.
- Guarantee good service and quality from PCB quotation to delivery.

PCB Prototype Boards Service features

- Custom PCB Prototype Boards service.
- You get what you pay for!
- 7*24 hours Online service.
- Professional Technical support.
- Fast turnarounds.
- Fast delivery.

Certification(UL:E466618, TS16949, ISO9001.RoHS)

<p>IPI ADDENDUM</p> <p>NOTICE OF COMPLETION AND AUTHORIZATION TO APPLY THE UL MARK</p> <p>Our Reference: File E466618, Vol. 1 Project No. Your Reference: N/A Project Scope: USR - Addition of new PWB Types JPX-D and JPY</p> <p>This addendum covers products manufactured at the following location: SHENZHEN JINGHONGYI ART CIRCUIT LTD Zhi Chen 4/F NO. 15of Building Wanxia, Tongfuyu Industry Shajing Baoan Shenzhen Guangdong, China 974662</p> <p>Before you may begin shipping product with the UL Mark at the above man inspection (IPI) must be successfully performed by a UL representative at the inspection center.</p> <p>The IPI is intended to confirm that your manufacturing location is capable of meeting UL's requirements. YOU MAY NOT SHIP PRODUCTS WITH THE UL MARK UNTIL YOU HAVE COMPLETED AND UL HAS FOUND THE PRODUCTS AT THE FACTOR REQUIREMENTS. Once the IPI has been successfully completed, you will be authorized to use the UL Mark.</p> <p>Instructions for the IPI will be sent to our inspection center nearest to you. Please contact us for more information.</p>	
<p>抄: 查抄:</p>	<p>Shenzhen Inspection Center (For Manufacturer No. 9) 深圳检验中心 (上述工厂编号974662) 3/F, Galaxy Wind Building, Keyuan Road, Nanshan District, Shenzhen 深圳市南山区科苑北路银河风云大厦三楼, 邮编: 518057 电话: 86-755- 96130536 联系人: Mr. Bill Zhang张振宇 邮箱地址: szic@sz.cedc.com</p>

CERTIFICATION EUROPE

Certificate of Registration

This is to Certify that the Quality Management System of

Shenzhen Jing Hongyi Circuit Co., Ltd.

No. 15 plant, 4 Southwest side, Tongfuyu Industrial Park, Shajing Street, Baoan District, Shenzhen, China

Has been audited to the following Quality Management Standard:

IATF 16949:2016

This system is valid for

Technology development, production and service of circuit boards

Date of issue: Apr. 20, 2018 Date of expiry: Apr. 20, 2020

This certificate will not remain valid only if the client accepts at least one surveillance audit at the period of the certificate in which the surveillance audit mark is in the designated position on the certificate.

Issued by: **Intertek**

12months 24months

CERTIFICATION EUROPE (HONGKONG) LIMITED WWW.CE-UK.COM

SGS

Test Report No. SZXEC1701145601

SHENZHEN JINGHONGYI CIRCUIT CO.,LTD
 4/F NO.15 OF BUILDING WANXIA TONGFUYU INDUSTRY SHAJING BAOAN CHINA

The following sample(s) was/were submitted and identified on behalf of:

SGS Job No.: RP17-011090 - SZ
 Date of Sample Received: 21 Nov 2017
 Testing Period: 21 Nov 2017 - 24 Nov 2017
 Test Requested: Selected test(s) as requested by client.
 Test Method: Please refer to next page(s).
 Test Results: Please refer to next page(s).
 Conclusion: Based on the performed tests on submitted samples, the following substances are not detected: Mercury, Cadmium, Hexavalent chromium, Polychlorinated biphenyl ethers (PCBES), Bis(2-ethylhexyl) phthalate (DEHP), Butyl phthalate (DBP), and Diisobutyl phthalate (RoHS Directive (EU) 2015/863 amending

Signed for and on behalf of
 SGS-CSTC Standards Technical Services Co., Ltd. Shenzhen Branch

Kenny

Kenny Li
 Approved Signatory

ROHS COMPLIANT

Unless otherwise agreed in writing, this document is issued by the Company in accordance with the terms and conditions of the contract. The Company is not responsible for the accuracy of the information provided by the client. The Company is not responsible for the accuracy of the information provided by the client. The Company is not responsible for the accuracy of the information provided by the client. The Company is not responsible for the accuracy of the information provided by the client.

PCB Shipment

JHY PCB offers flexible shipping methods for our customers, you may choose from one of the methods below.



Shipping Process

After production and testing, your PCB orders will be sent to our shipping department. As the quick turn PCB manufacturer, JHY PCB shipping department will ship your PCB quickly without any pending.

JHY PCB 's Packing Way

- Use one professional PCB vacuum bag, with desiccant inside. Vacuum compressed totally.
- Paste label and RoHs mark. Use second vacuum bag to protect boards again, vacuum compressed, make sure no exception.
- Microsection report and Tin testing board are put together with PCB in cartons. COC (Certificate of Conformity) will be sent to customer by email in PDF.
- Several layers of thick EPE (Expandable polyethylene) are filled fully in gaps between PCBs and cartons. The thickness of 1 layer EPE is 10mm.
- Neutral Packing is adopted if no special requirements. Strong and thick cartons (Thickness: 10mm, 7 layers). Different sizes of cartons are designed to meet the demand of different PCB size. All packages are within weight limit of cartons. For mass production order, no exceed 21kg per carton normally.
- All cartons sealed with strong adhesive tape should be sealed twice so as to make them more durable.
- Solid PP/PET strapping is used outside of cartons.
- Shipping mark, fragile mark and postcode label are all pasted clearly.

Whatever we do or whatever we think of is to make sure boards are shipped to customer safely and quickly.

How to ship your PCB?

- Firstly, JHY PCB shipping department will print order address and invoice.
- Secondly, JHY PCB will set the shipment information on the Logistics company website.
- Thirdly, the Logistics company staff will collect the package from JHY PCB and ship it to you.

Shipment Term

With the purpose of better customer service and meeting the customer demand, JHY PCB provides following shipping methods.

JHY PCB is experienced in exporting. For PCB Prototype and small-medium volume PCB order, we have a stable and long-term good relationship with forwarder, such as international express company DHL, FedEx, TNT, UPS. For mass production order, we have a famous and reliable shipping company for support.

FAQ

Q1: What is your minimum order quantity?

A: Our MOQ is 1 PCS.

Q2: Do you accept PCB design with different boards on one panel?

A: Of course, we can do different boards on the same panel.

Q3. Are my Gerber Files safe?

A: We protect the intellectual property for customers in the whole process. All documents from customers are never shared with any third parties.

Q4: What is needed for quotation?

A: Quantity, PCB Gerber file, Technical requirements(material, board thickness, surface finish, copper thickness, solder mask color, silkscreen color,...)

Q5.How to quote shipping cost?

A: The shipping cost is determined by the shipment way(forwarder name, delivery days), destination, weight&dimension of packages. If you use your own forwarder, please inform us.