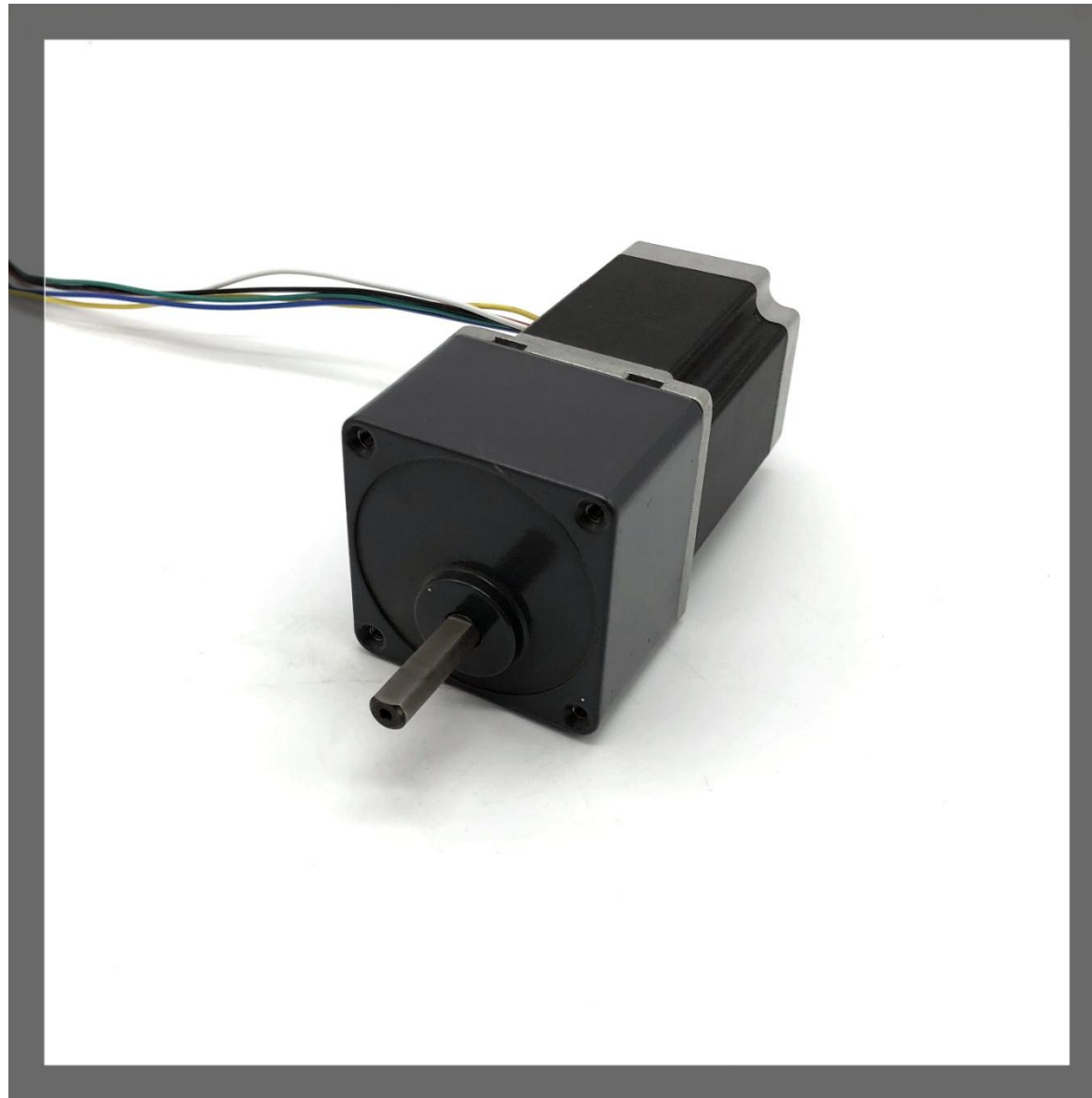


NEMA23 Hybrid Gear Reducer Stepper Motor (1.8°) MR57HS Series



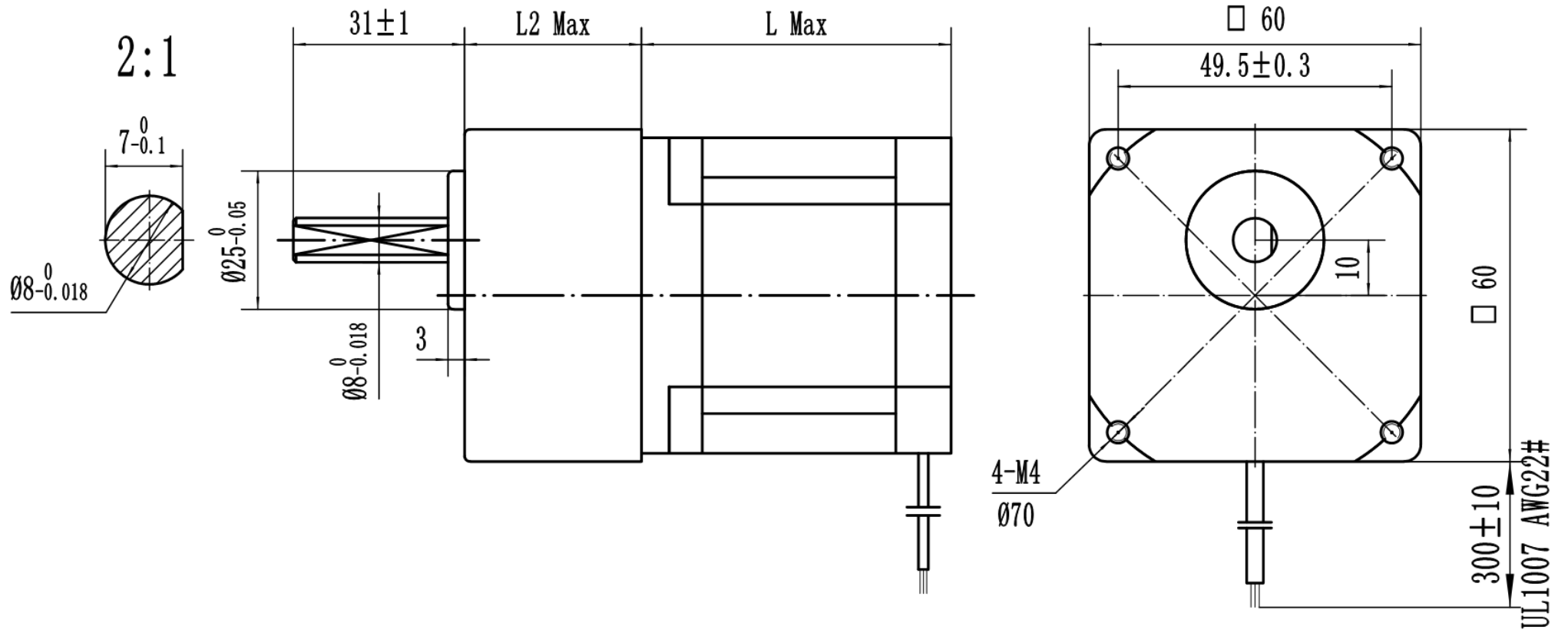
Technical Parameter of the Gear Reducer

项目 Ltem		1级 (Level)	2级 (Level)	3级 (Level)	4级 (Level)
减速比The Gear Ratio	i	3、5、10	15、20、25、 30	50、75	90、100、120 、150
长度Length (L2)	mm	32/42			
最大负载The Maximum Load	Nm	3			
回差Return Difference	°	≤4	≤3.5	≤3	≤2.5
噪音Noise	dB	≤60			
重量Weight	Kg	0.3	0.45		

注：齿轮减速型系列使用范围仅适用于减速作用，如需提高扭矩使用需选用行星减速系列

Note: the range of gear deceleration series is only suitable for deceleration. If we need to increase the torque, we need to use planetary speed reduction series.

Drawing of the stepper motor



Size: mm

Technical Specification

型号 Model	相数 Number of phase	电流 Current	电阻 Resistance	电感 Inductance	保持转矩 Holding Torque	转动惯量 Rotor Inertia	定位力矩 Detent Torque	重量 Weight	机身长度 Length (L)
		A	Ω	mH	Kg. cm	g. cm ²	g. cm	Kg	mm
MR57HS45-4100	2	1	4	8	6	155	250	0.5	45
MR57HS45-4200	2	2	1.4	3.6	6				
MR57HS45-4250	2	2.5	0.95	2.4	6.5				
MR57HS56-4100	2	1	5.6	20.3	12	260	400	0.65	56
MR57HS56-4200	2	2	2.1	6.4	12				
MR57HS56-4300	2	3	0.9	2.8	11				
MR57HS76-4100	2	1	8.8	39	20	460	700	1	76
MR57HS76-4150	2	1.5	4.3	18	20				
MR57HS76-4200	2	2	2.3	9.8	19				
MR57HS76-4300	2	3	0.9	2.8	19				

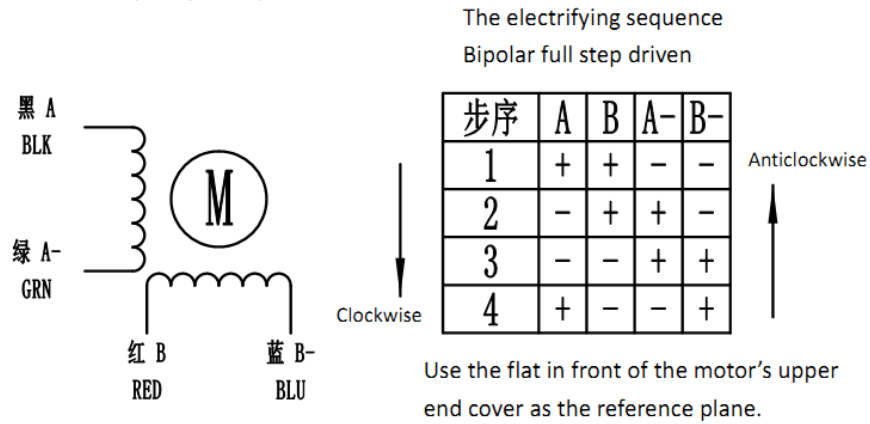
注：以上数据仅供参考，具体参数可根据要求定制。

Note: the above data are for reference only, and the specific parameters can be customized according to requirements.

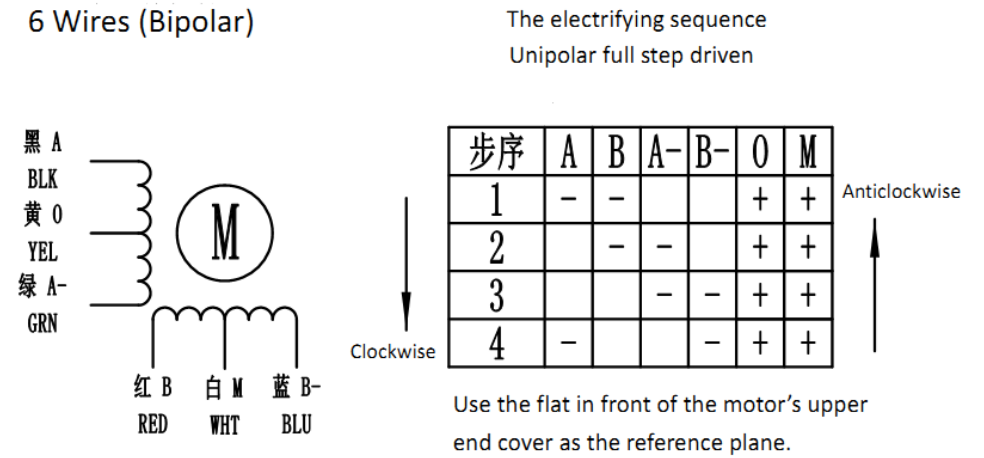
Wires Instruction

2 Phase Stepper Motor

4 Wires (Unipolar)



6 Wires (Bipolar)



4 Wires (Bipolar)

6 Wires (Unipolar)

Customized Service

- 1, The shaft can be customized based on customer's requirement of device connecting.
- 2, The coil winding and height of the motor can be customized based on customer's requirement about the torque, speed and others.
- 3, The wires can be customized, which includes lead, terminal of lead tape, socket and others

