

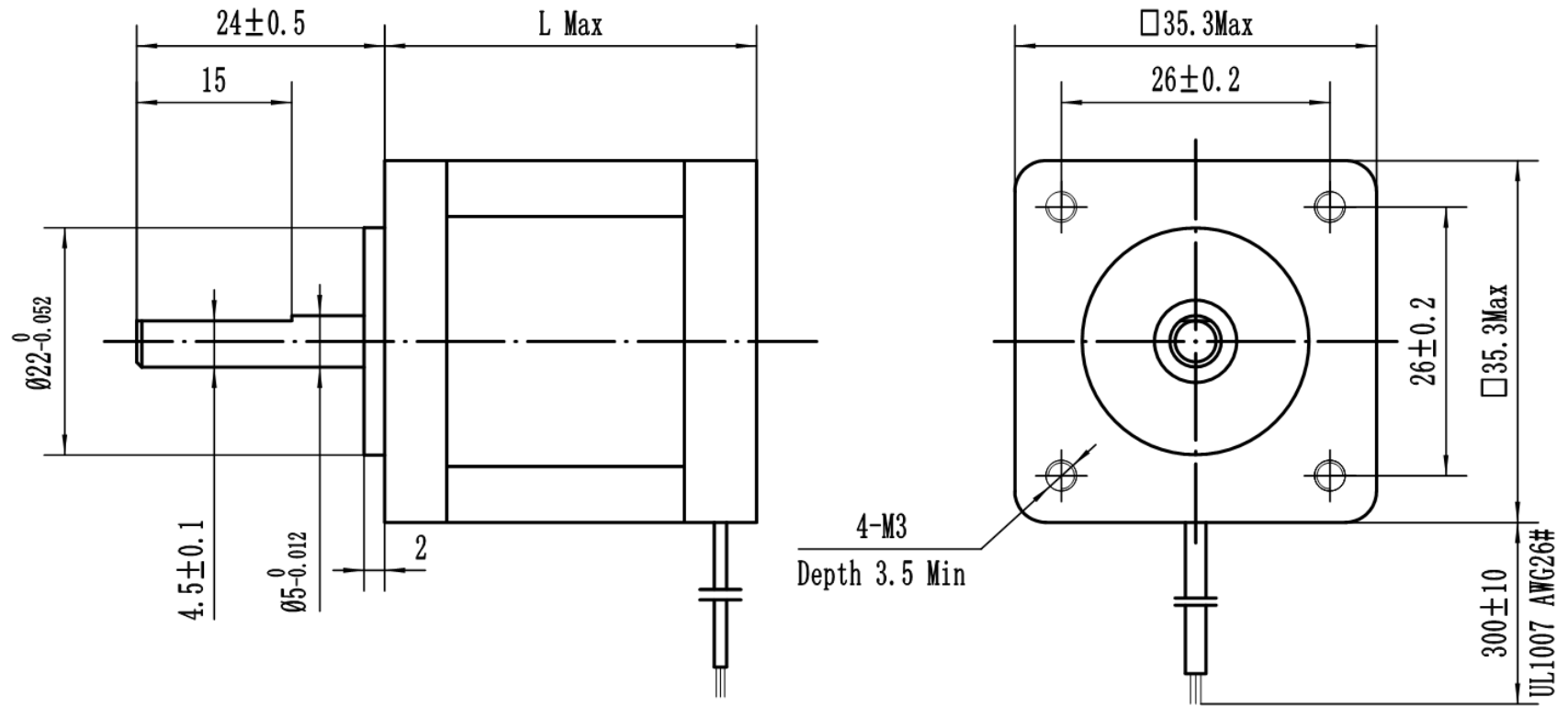
NEMA14 Hybrid Stepper Motor (0.9°) MR35HM Series



Technical Parameter

Subject	Specification	Subject	Specification
Phase	2	Axial Load	25N(5.6 Lbs.) Thrust 65(15 Lbs.) Tension
Step/Circle	400		
Step Angle	0.9°	Radial Load	30N(6.5 Lbs) point of action in the middle of shaft
Step Angle Accuracy	±5%	Operating Temperature	-20°C-50°C
IP Level	IP40	Insulation Grade	B class. 130°C(F class available)
Certificate	CE Rohs	Insulation Resistance	100 MegOhms

Drawing of the stepper motor



Size: mm

Technical Specification

型号 Model	相数 Number of phase	电流 Current	电阻 Resistance	电感 Inductance	保持转矩 Holding Torque	转动惯量 Rotor Inertia	定位力矩 Detent Torque	重量 Weight	机身长度 Length (L)
		A	Ω	mH	Kg. cm	$g. cm^2$	g. cm	Kg	mm
MR35HM20-4025	2	0.25	30	30	0.4	10	40	0.12	20
MR35HM28-4070	2	0.7	6.5	8	0.9	12	80	0.15	28
MR35HM28-4100	2	1	3.2	3.8	0.9				
MR35HM28-6060	4	0.6	8.8	5.2	0.7				
MR35HM28-6100	4	1	3.2	2	0.7				
MR35HM36-4070	2	0.7	5.8	8.5	1.5	20	100	0.21	36
MR35HM36-4100	2	1	3.2	4.8	1.5				
MR35HM36-6070	4	0.7	7.3	5.2	1.2				
MR35HM36-6120	4	1.2	6.8	4.5	1.2				

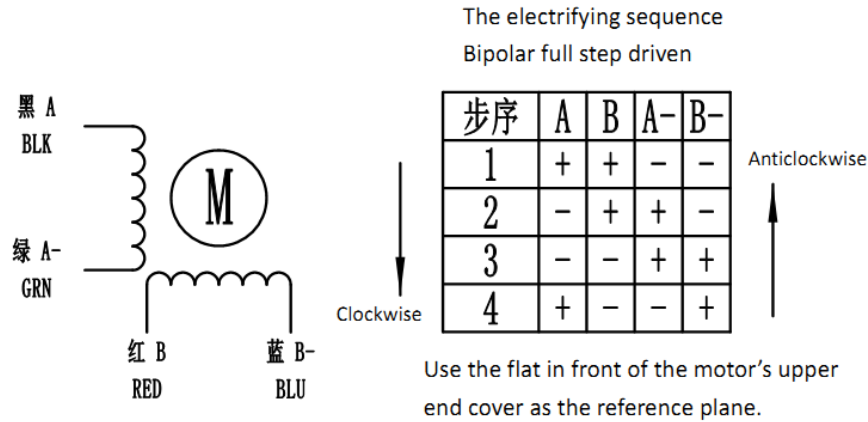
注：以上数据仅供参考，具体参数可根据要求定制。

Note: the above data are for reference only, and the specific parameters can be customized according to requirements.

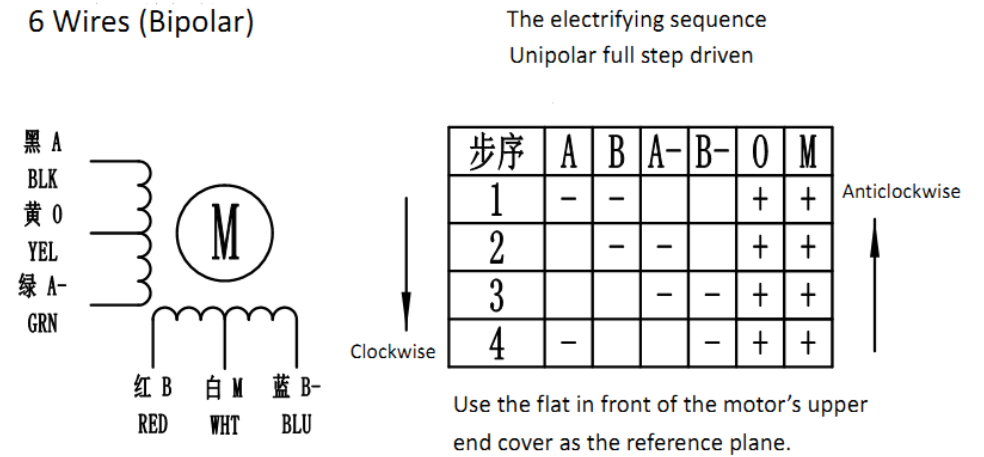
Wires Instruction

2 Phase Stepper Motor

4 Wires (Unipolar)



6 Wires (Bipolar)



4 Wires (Bipolar)

6 Wires (Unipolar)

Customized Service

- 1, The shaft can be customized based on customer's requirement of device connecting.
- 2, The coil winding and height of the motor can be customized based on customer's requirement about the torque, speed and others.
- 3, The wires can be customized, which includes lead, terminal of lead tape, socket and others.





