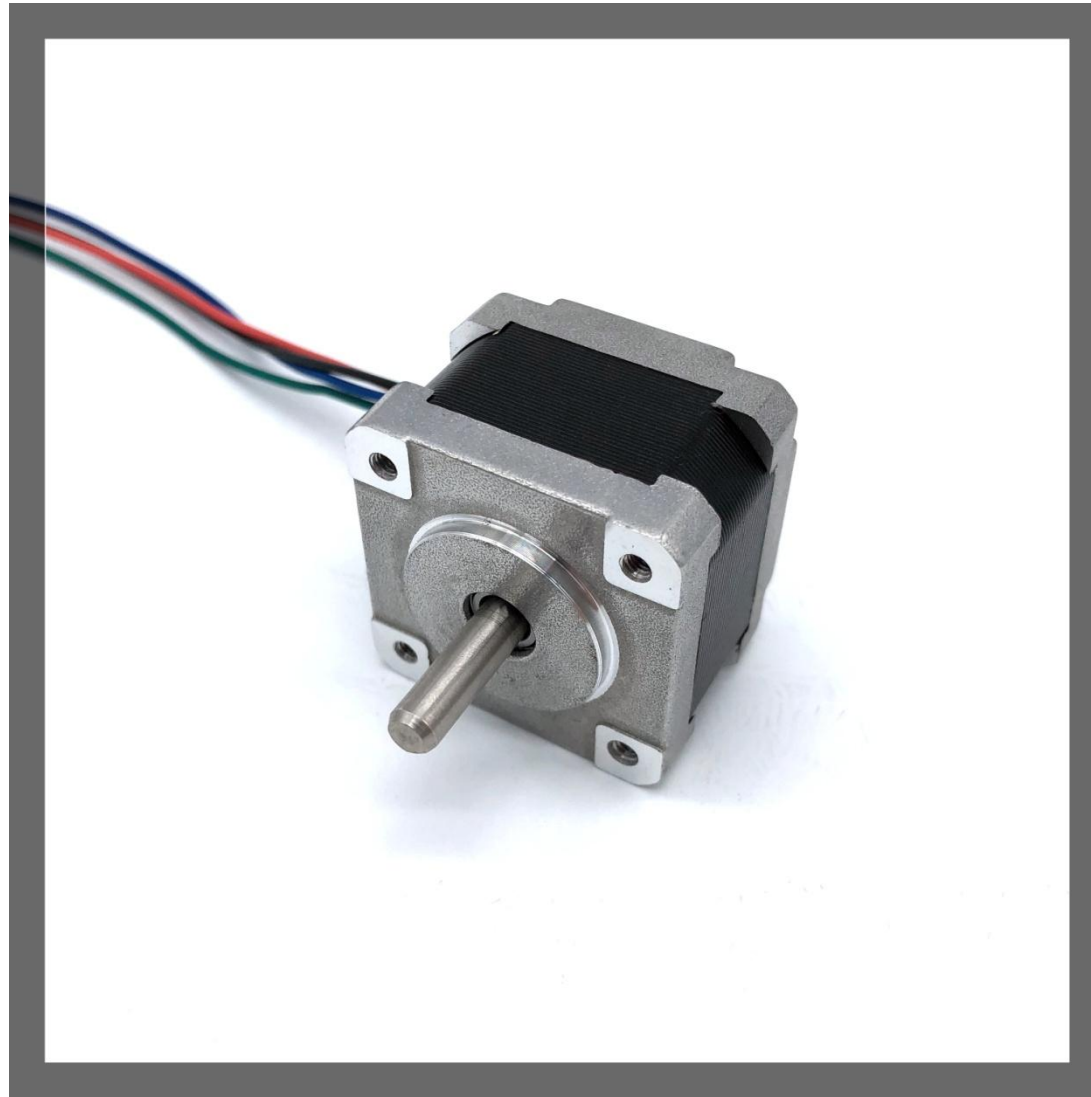


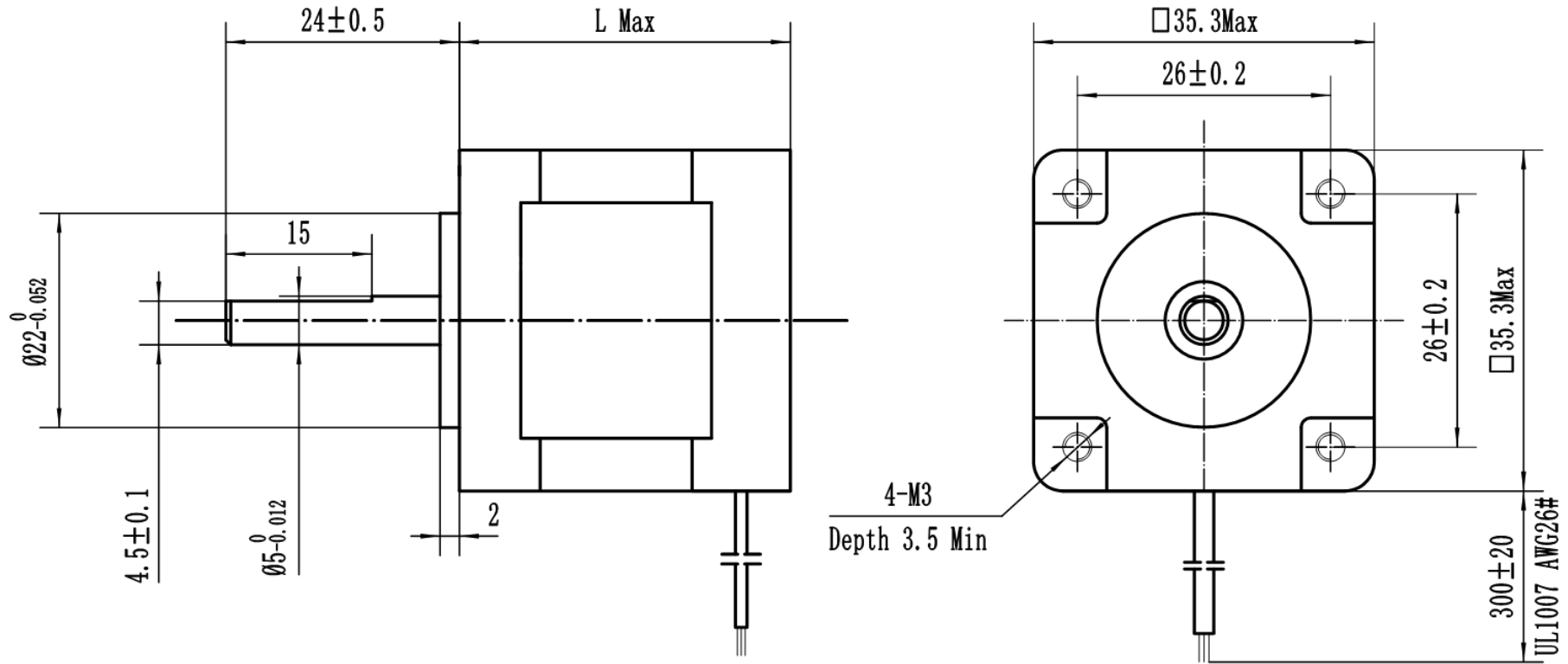
NEMA14 Hybrid Stepper Motor (1.8°) MR35HY Series



Technical Parameter

Subject	Specification	Subject	Specification
Phase	2	Axial Load	25N(5.6 Lbs.) Thrust 65(15 Lbs.) Tension
Step/Circle	200		
Step Angle	1.8°	Radial Load	30N(6.5 Lbs) point of action in the middle of shaft
Step Angle Accuracy	±5%	Operating Temperature	-20°C-50°C
IP Level	IP40	Insulation Grade	B class. 130°C(F class available)
Certificate	CE Rohs	Insulation Resistance	100 MegOhms

Drawing of the stepper motor



Size: mm

Technical Specification

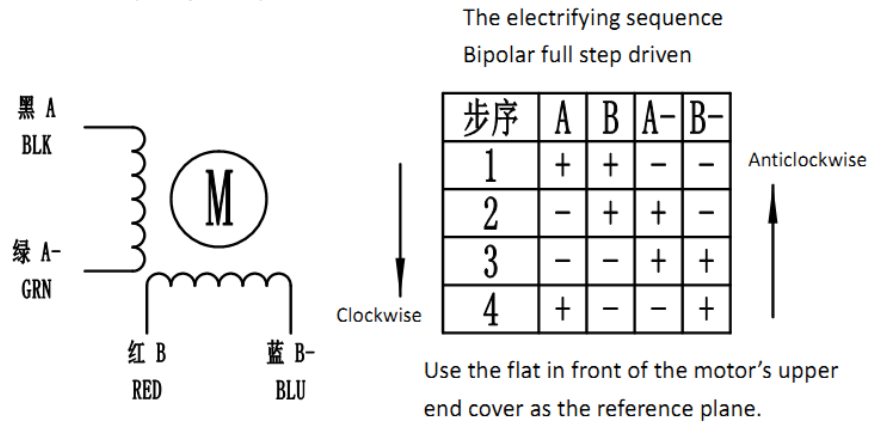
型号 Model	相数 Number of phase	电流 Current	电阻 Resistance	电感 Inductance	保持转矩 Holding Torque	转动惯量 Rotor Inertia	定位力矩 Detent Torque	重量 Weight	机身长度 Length (L)
		A	Ω	mH	Kg. cm	$g. cm^2$	g. cm	Kg	mm
MR35HY20-4040	2	0.4	25	18.5	0.5	8	60	0.1	21
MR35HY26-4080	2	0.8	4.8	4.3	0.8	10	80	0.12	27
MR35HY28-4050	2	0.5	20	18	1	10	80	0.14	28
MR35HY28-4075	2	0.75	4.3	4.3	0.8				
MR35HY34-4085	2	0.85	5.5	5	1.4	20	120	0.22	35
MR35HY34-6120	4	1.2	2.7	1.4	1.2				
MR35HY45-4100	2	1	3.6	4.3	1.8	25	160	0.3	45

注：以上数据仅供参考，具体参数可根据要求定制。

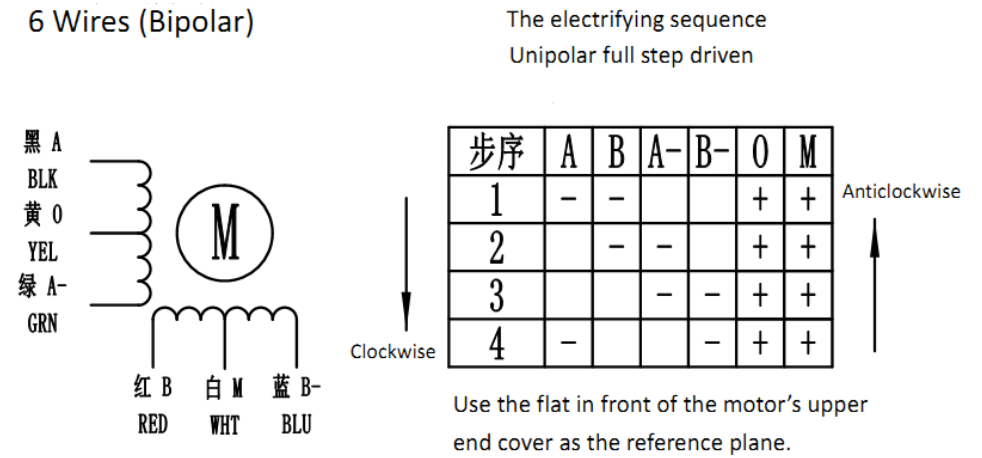
Wires Instruction

2 Phase Stepper Motor

4 Wires (Unipolar)



6 Wires (Bipolar)



4 Wires (Bipolar)

6 Wires (Unipolar)

Customized Service

- 1, The shaft can be customized based on customer's requirement of device connecting.
- 2, The coil winding and height of the motor can be customized based on customer's requirement about the torque, speed and others.
- 3, The wires can be customized, which includes lead, terminal of lead tape, socket and others.

