

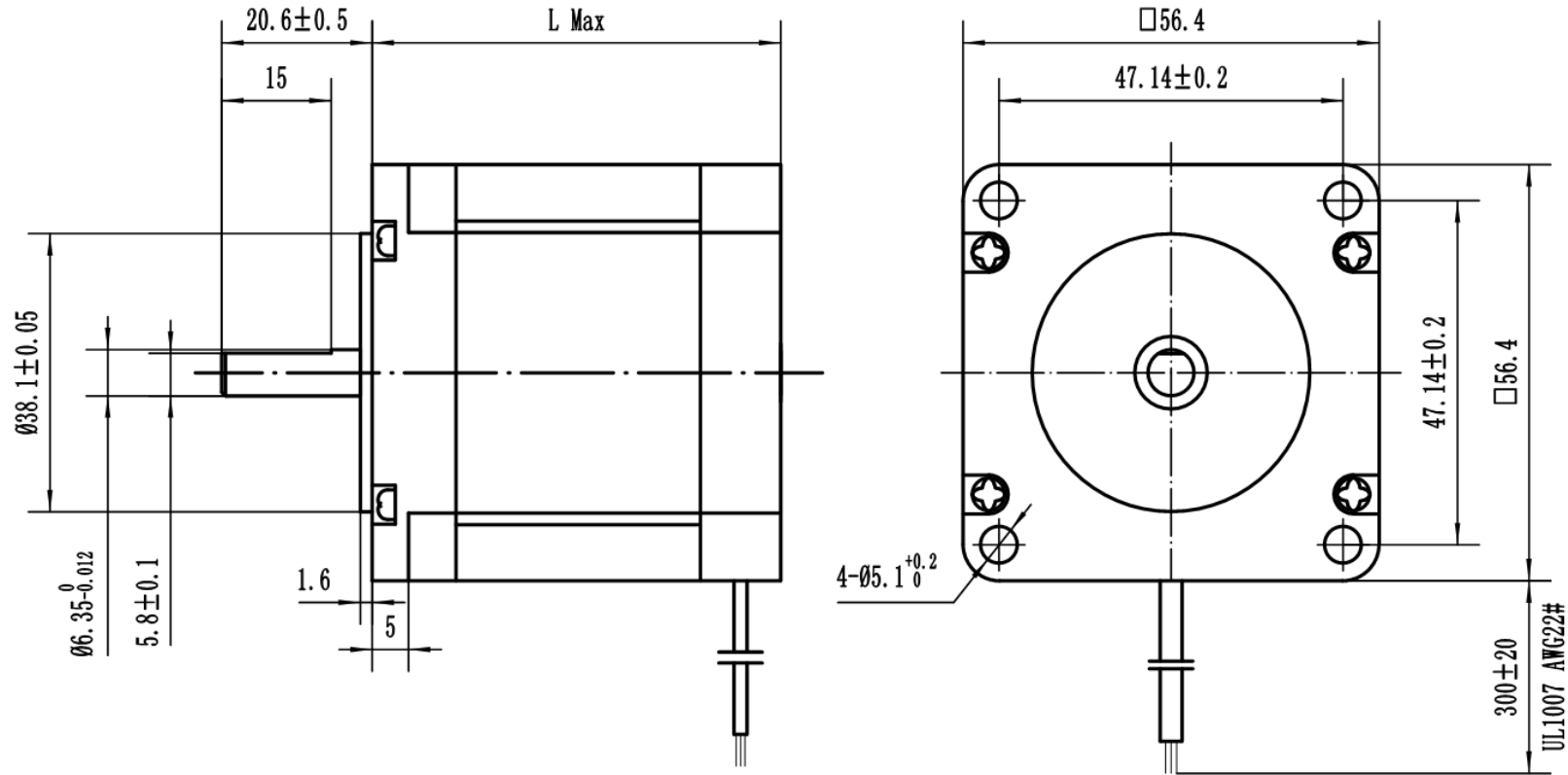
## NEMA23 Hybrid Stepper Motor ( 1.8° ) MR57HS Series



## Technical Parameter

Subject	Specification	Subject	Specification
Phase	2	Axial Load	40N(9 Lbs.) Thrust 130N(30 Lbs.) Tension
Step/Circle	200		
Step Angle	1.8°	Radial Load	70N(15.5 Lbs) point of action in the middle of shaft
Step Angle Accuracy	±5%	Operating Temperature	-20°C-50°C
IP Level	IP40	Insulation Grade	B class. 130°C(F class available)
Certificate	CE Rohs	Insulation Resistance	100 MegOhms

## Drawing of the stepper motor



Size: mm

## Technical Specification

型号 Model	相数 Number of phase	电流 Current	电阻 Resistance	电感 Inductance	保持转矩 Holding Torque	转动惯量 Rotor Inertia	定位力矩 Detent Torque	重量 Weight	机身长度 Length (L)
		A	$\Omega$	mH	Kg. cm	$g. cm^2$	g. cm	Kg	mm
MR57HS41-4100	2	1	4.5	10.5	5	130	220	0.45	41
MR57HS41-4200	2	2	1.2	2.1	5				
MR57HS41-4250	2	2.5	0.7	1.7	5				
MR57HS41-6100	4	1	5	5.8	4				
MR57HS41-6200	4	2	1.5	1.6	4				
MR57HS51-4100	2	1	6.6	8.2	8	220	320	0.55	51
MR57HS51-4200	2	2	1.5	3.7	8.5				
MR57HS51-6200	4	2	1.7	2.5	7				
MR57HS56-4100	2	1	5.6	20.3	12	260	400	0.65	56
MR57HS56-4200	2	2	2.1	6.4	12				
MR57HS56-4300	2	3	0.9	2.8	11				
MR57HS56-6100	4	1	7.4	11.5	9				
MR57HS56-6200	4	2	1.8	2.7	9				
MR57HS56-6300	4	3	0.75	1.1	9				

MR57HS65-4100	2	1	7.6	21	15	380	600	0.85	65				
MR57HS65-4250	2	2.5	1.5	4.5	15								
MR57HS65-4300	2	3	0.8	2.3	15								
MR57HS76-4100	2	1	8.8	39	20	460	700	1	76				
MR57HS76-4150	2	1.5	4.3	18	20								
MR57HS76-4200	2	2	2.3	9.8	19								
MR57HS76-4300	2	3	0.9	2.8	19								
MR57HS76-6100	4	1	8.6	15	13.5								
MR57HS76-6200	4	2	2.3	4.8	13.5								
MR57HS76-6300	4	3	1	2.1	12	520	780	1.1	80				
MR57HS80-4300	2	3	1.1	3.3	22								
MR57HS100-4420	2	4.2	1	4.2	27					660	1000	1.5	100
MR57HS112-4200	2	2	5.5	18	32								
MR57HS112-4450	2	4.5	0.9	3.3	30								

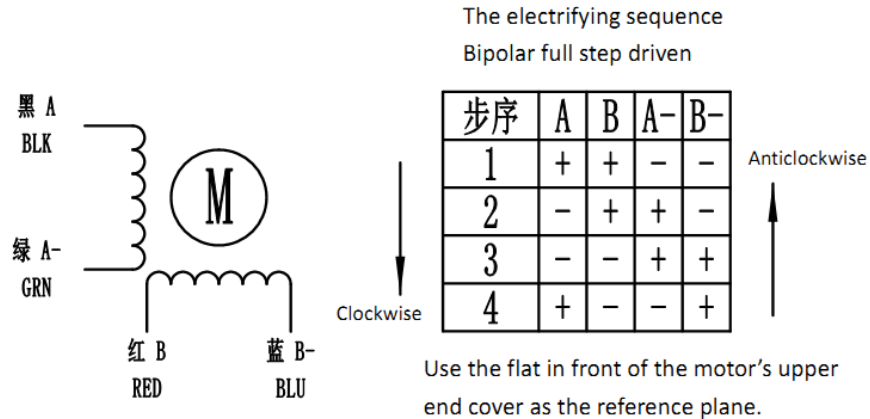
**注：以上数据仅供参考，具体参数可根据要求定制。**

**Note: the above data are for reference only, and the specific parameters can be customized according to requirements.**

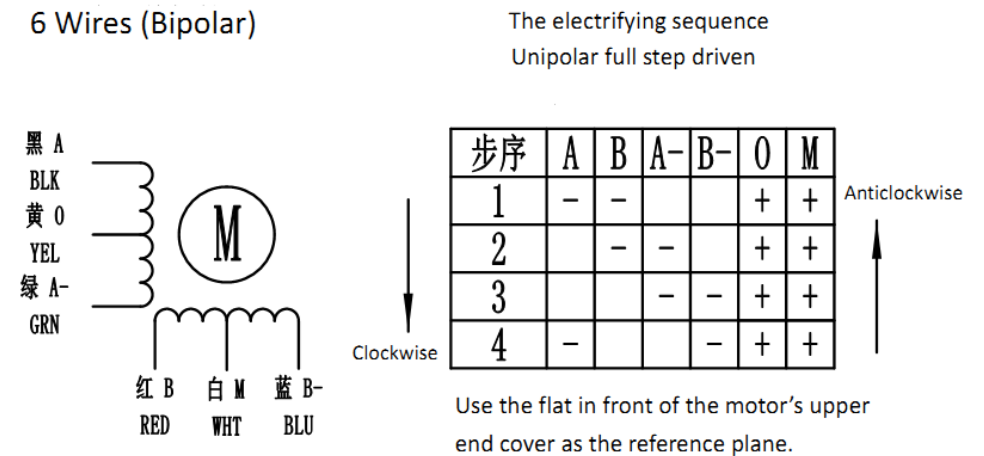
## Wires Instruction

# 2 Phase Stepper Motor

### 4 Wires (Unipolar)



### 6 Wires (Bipolar)



### 4 Wires (Bipolar)

### 6 Wires (Unipolar)

## Customized Service

- 1, The shaft can be customized based on customer's requirement of device connecting.
- 2, The coil winding and height of the motor can be customized based on customer's requirement about the torque, speed and others.
- 3, The wires can be customized, which includes lead, terminal of lead tape, socket and others







