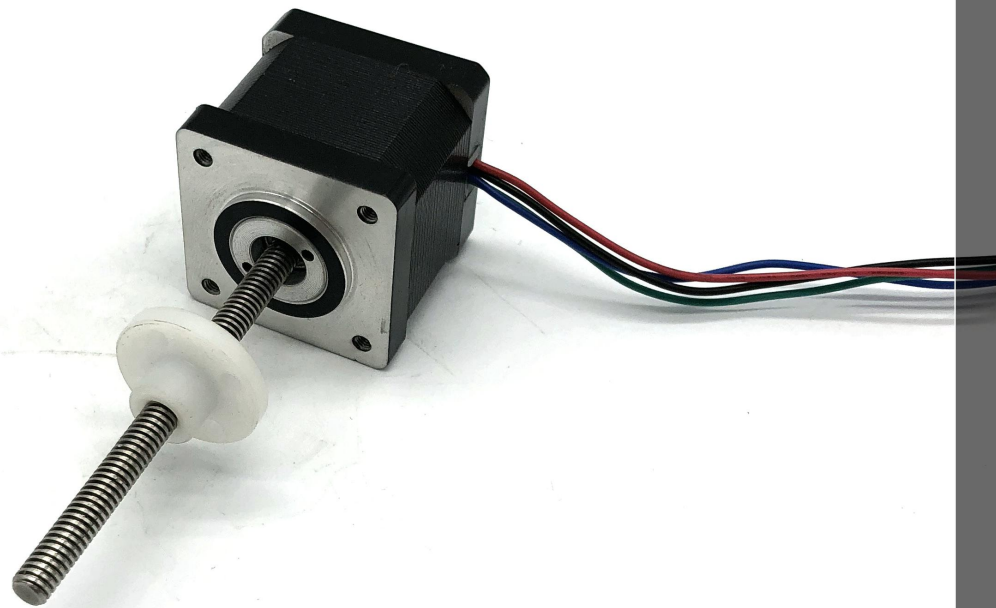


MR35HS 外部驱动式 Externally driven - Size 14 (1.8 ° Step Angle )



技术参数:

<b>MR35HS 混合式直线步进电机Hybrid linear stepper motor (1.8° Step Angle) 外部驱动式Externally driven</b>				
<b>型号Model</b>	<b>35HS34-4050W</b>	<b>35HS34-4150W</b>	<b>35HS45-4050W</b>	<b>35HS45-4150W</b>
<b>相数Number of phase</b>	2	2	2	2
<b>电流Current</b>	0.5A	1.5A	0.5A	1.5A
<b>电阻Resistance</b>	13Ω	1.8Ω	24Ω	2.7Ω
<b>电感Inductance</b>	14mH	1.9mH	29mH	3.2mH
<b>转子惯量Rotor Inertia</b>	18g-cm <sup>2</sup>		28g-cm <sup>2</sup>	
<b>绝缘等级Insulation grade</b>	B级 (F级可用) – B level (F level available)			
<b>重量Weight</b>	0.19Kg		0.22Kg	
<b>机身长度Length</b>	34mm		45mm	

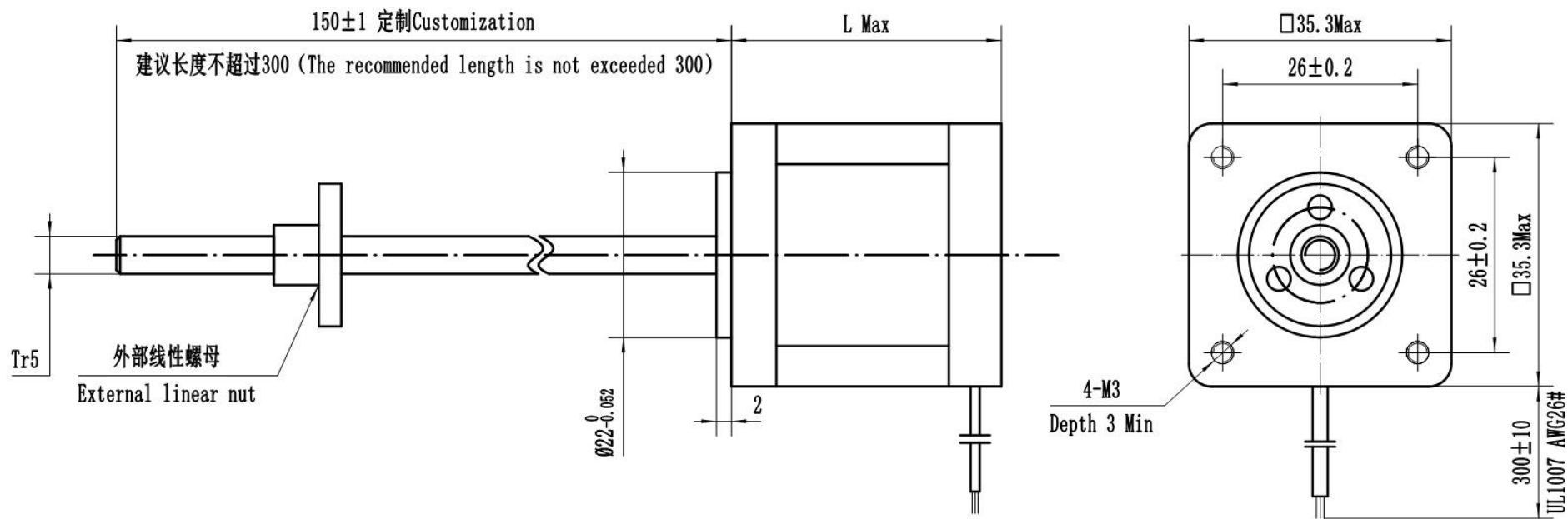
技术规格:

螺杆直径 Screw diameter	导程 Lead (mm)	螺距 Pitch (mm)	步长 Step (mm)	导程代码 Model Code
Tr5	1	1	0.005	W0501
Tr5	2	1	0.01	W0502
Tr6.5	3	1.5	0.015	W6503
Tr8	2	2	0.01	W0802
Tr8	4	2	0.02	W0804
Tr8	8	2	0.04	W0808

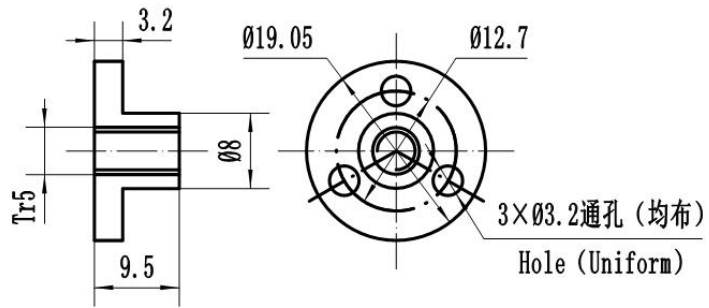
其他丝杆规格可根据电机直线速度定制。

Other wire rod specifications can be customized according to the linear speed of motor.

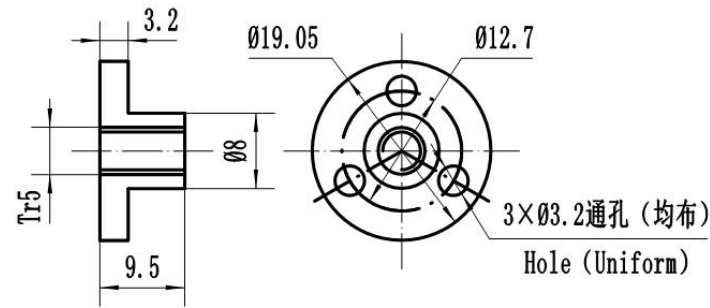
机械尺寸: mm



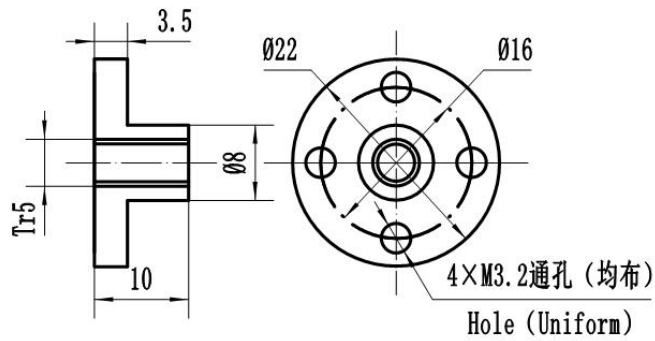
MR001-Tr5-A 白色POM (White POM)



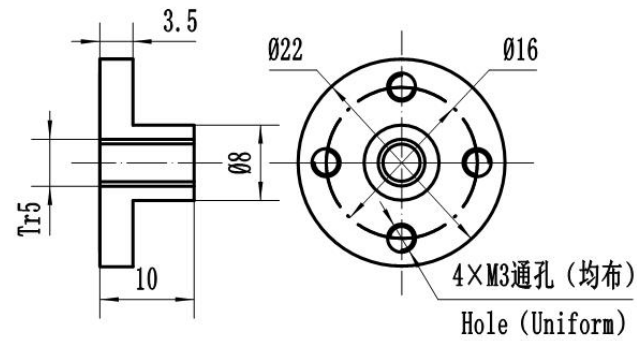
MR001-Tr5-B 铜 (Copper)



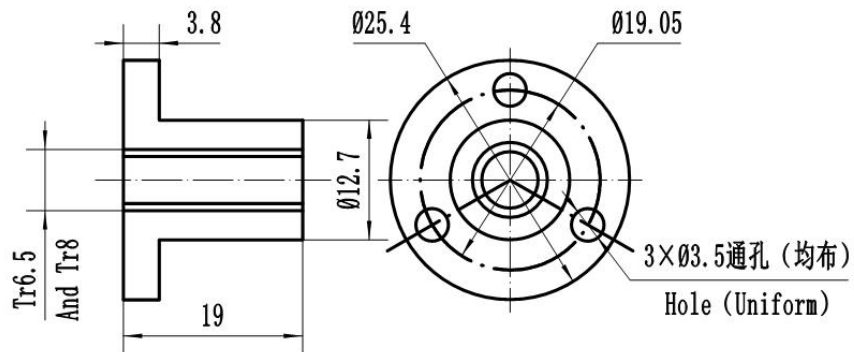
MR002-Tr5-A 白色POM (White POM)



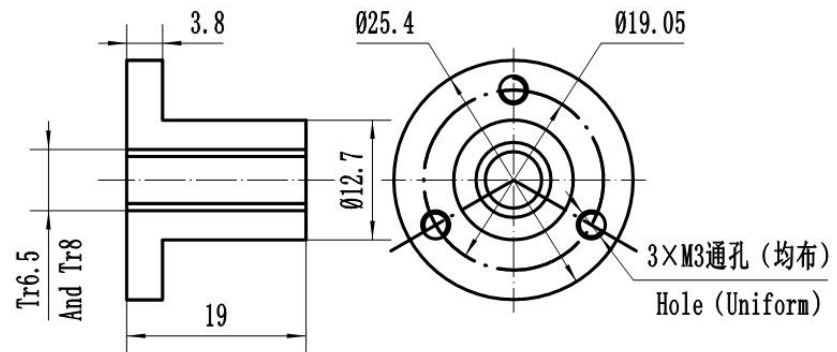
MR002-Tr5-B 铜 (Copper)



MR003-Tr6.5/Tr8-A 白色POM (White POM)



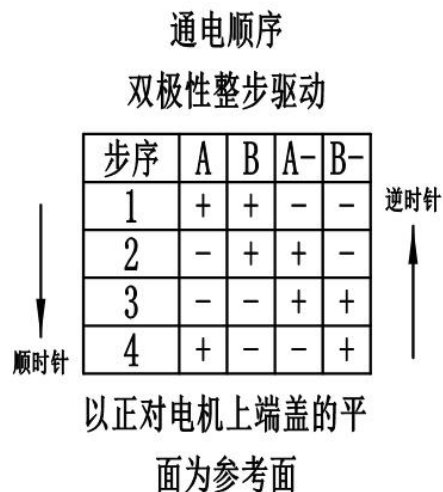
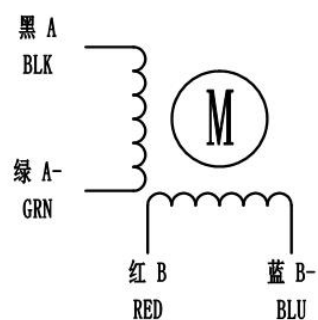
MR003-Tr6.5/Tr8-B 铜 (Copper)



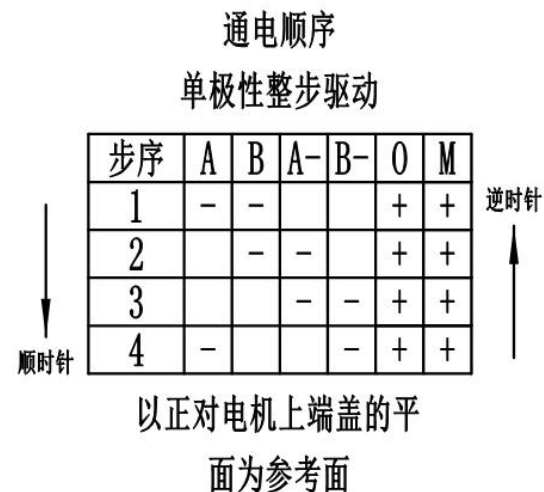
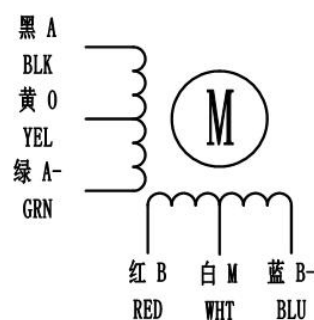
接线图：

## 2相电机

### 4 引线（双极性）



### 6 引线（单极性）



客户定制：

- 1、丝杆长度可以定制，建议最大长度 300（螺母有白色 POM 材料和铜材料可选）
- 2、根据客户使用的不同直线速度和推拉力，选择合适的电机机身以及螺杆规格（影响直线速度主因素是螺杆导程，如导程 1mm，电机每旋转一圈就是螺杆运行 1mm 距离，关于直线电机负载可详细咨询我公司技术人员，以方便获取详细负载情况）
- 3、连接线束定制（引线、引线带端子、插座等形式）

