

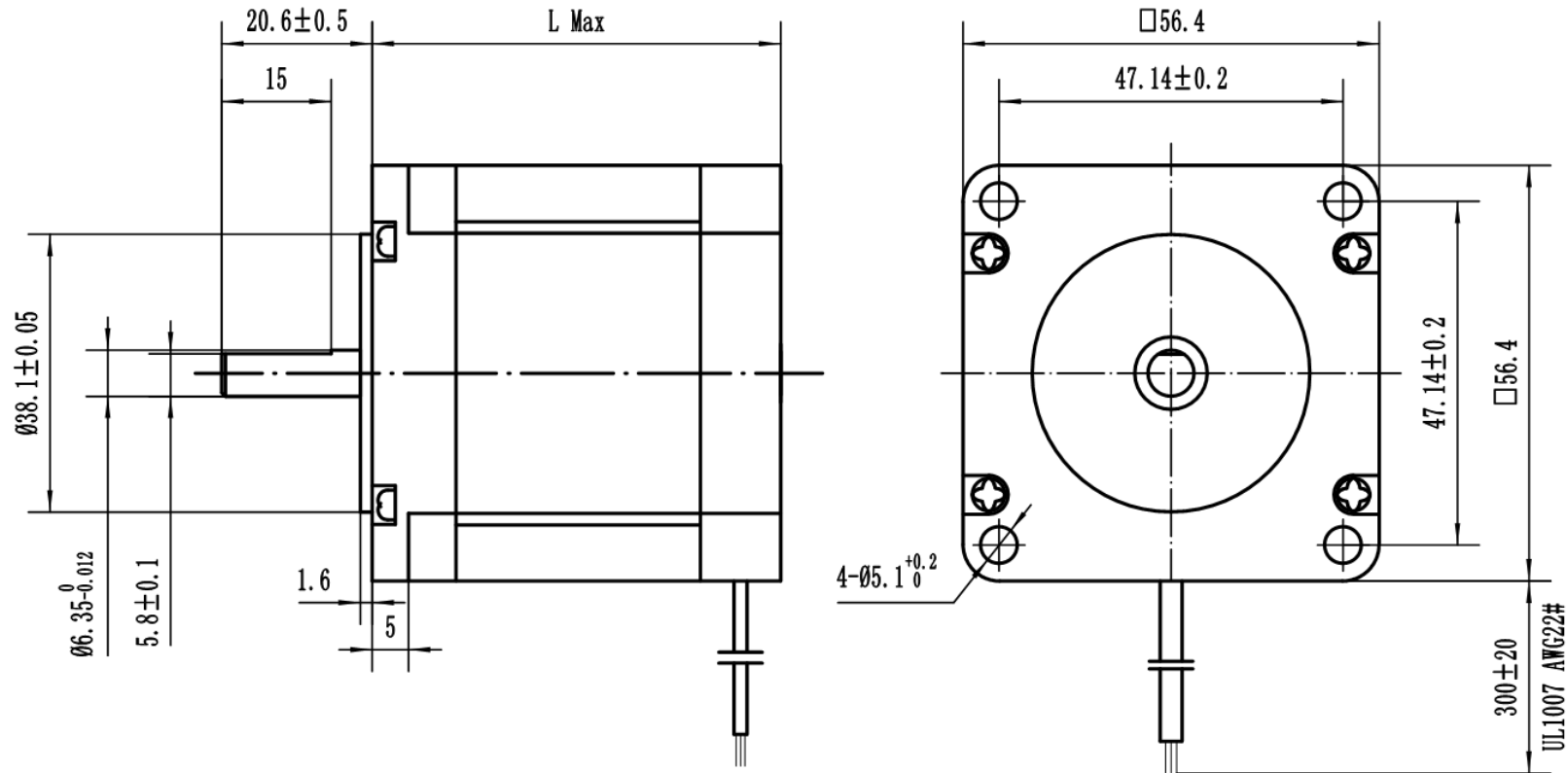
NEMA23 Hybrid Stepper Motor (0.9°) MR57HM Series



Technical Parameter

Subject	Specification	Subject	Specification
Phase	2	Axial Load	40N(9 Lbs.) Thrust 130N(30 Lbs.) Tension
Step/Circle	400		
Step Angle	0.9°	Radial Load	70N(15.5 Lbs) point of action in the middle of shaft
Step Angle Accuracy	±5%	Operating Temperature	-20°C-50°C
IP Level	IP40	Insulation Grade	B class. 130°C(F class available)
Certificate	CE Rohs	Insulation Resistance	100 MegOhms

Drawing of the stepper motor



Size: mm

Technical Specification

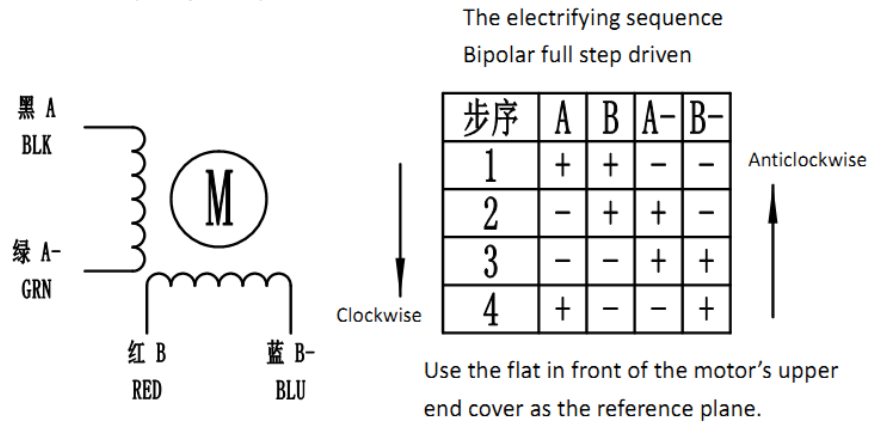
型号 Model	相数 Number of phase	电流 Current	电阻 Resistance	电感 Inductance	保持转矩 Holding Torque	转动惯量 Rotor Inertia	定位力矩 Detent Torque	重量 Weight	机身长度 Length (L)
		A	Ω	mH	Kg. cm	$g. cm^2$	g. cm	Kg	mm
MR57HM41-4280	2	2.8	0.7	2.2	5.5	130	220	0.45	41
MR57HM41-6100	4	1	5.7	8	4				
MR57HM41-6200	4	2	1.4	2.2	4				
MR57HM56-4280	2	2.8	0.9	4.5	12	260	400	0.65	56
MR57HM56-4300	2	3	0.8	2.8	10				
MR57HM56-6200	4	2	1.8	4.5	9				
MR57HM56-6300	4	3	0.75	1.9	9				
MR57HM76-4280	2	2.8	1.1	5.6	18	460	700	1	76
MR57HM76-4300	2	3	1.2	5	15				
MR57HM76-6200	4	2	2.2	5.6	13.5				
MR57HM76-6300	4	3	1	2.6	13.5				

注：以上数据仅供参考，具体参数可根据要求定制。

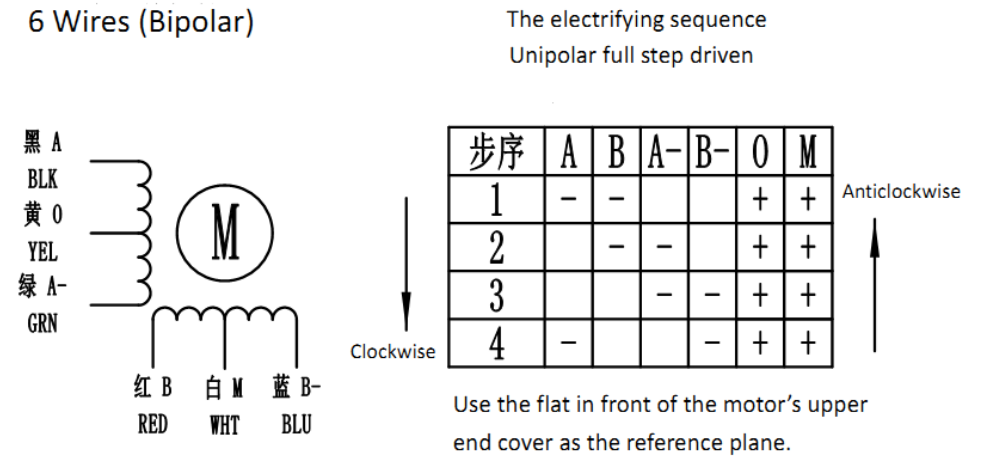
Wires Instruction

2 Phase Stepper Motor

4 Wires (Unipolar)



6 Wires (Bipolar)



4 Wires (Bipolar)

6 Wires (Unipolar)

Customized Service

- 1, The shaft can be customized based on customer's requirement of device connecting.
- 2, The coil winding and height of the motor can be customized based on customer's requirement about the torque, speed and others.
- 3, The wires can be customized, which includes lead, terminal of lead tape, socket and others

